

Units

UNIT 01

- ELEMENTS
- A_Mudsill made from "Rafter" 14 x 8 cm
 - B_Columns made from "Wooden Plank" 12'5 x 4'5cm
 - C_Beams made from "Rafter" 14 x 8 cm
 - D_Knee brace made from "Rafter" 14 x 8 cm
 - E_Tie beam made from "Wooden Plank" 12'5 x 4'5cm
 - F_Floor joist made from "Wooden Plank" 12'5 x 4'5 cm
 - G_Interior finishes from "Wooden Plank" 25 x 4'5 cm

MATERIALS FROM CATALOGUE (7 frames)

- 21 x "Rafter"
- 71 x "Wooden Plank / 2"
- 66 x "Wooden Slat / 1"
- 26 x "Trapezoidal Profile / Steel"
- 10 x "Trapezoidal Profile / 2'35 m"
- 8 x "Trapezoidal Profile / 2'63 m"

MATERIALS FROM OTHER UNITS (LEFTOVERS)

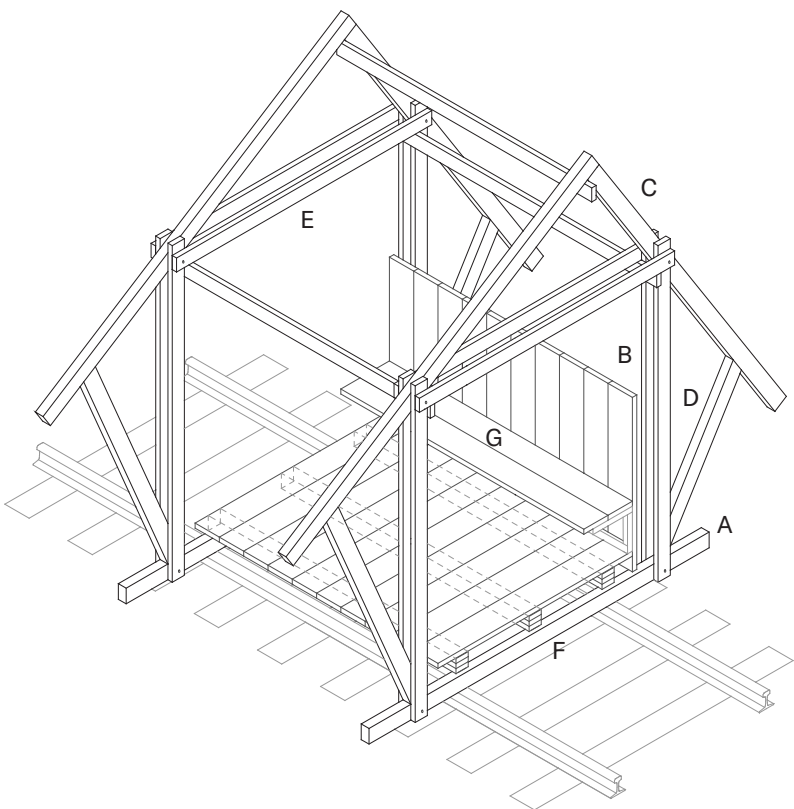
- 12 x "Wooden Plank / 2" from Unit 3
- 12 x "Wooden Plank / 2" reused in Unit 4

LEFTOVERS REUSED IN OTHER UNITS

- 1 x "Wooden Plank / 2" reused in Unit 02
- 1 x "Wooden Plank / 2" reused in Unit 04
- 7 x "Rafter" reused in Unit 03

LEFTOVERS REUSED FOR OTHER COMPONENTS

- 12 x leftovers of "Wooden Plank / 2"
- 7 x leftovers of "Rafter"



General Axo Unit 01



Model Image of Unit 01

UNIT 02

- ELEMENTS
- A_Mudsill made from "Wooden Beam" 12'5 x 12'5 cm
 - B_Columns made from "Wooden Beam" 12'5 x 12'5 cm
 - C_Beams made from "Wooden Beam" 12'5 x 12'5 cm
 - D_Knee brace made from "Wooden Plank" 12'5 x 4'5 cm
 - E_Tie beam made from "Wooden Plank" 12'5 x 4'5 cm
 - F_Floor joist made from "Wooden Plank" 12'5 x 4'5cm
 - G_Interior finishes from "Wooden Plank" 12,5 x 4'5 cm

MATERIALS FROM CATALOGUE (4 frames):

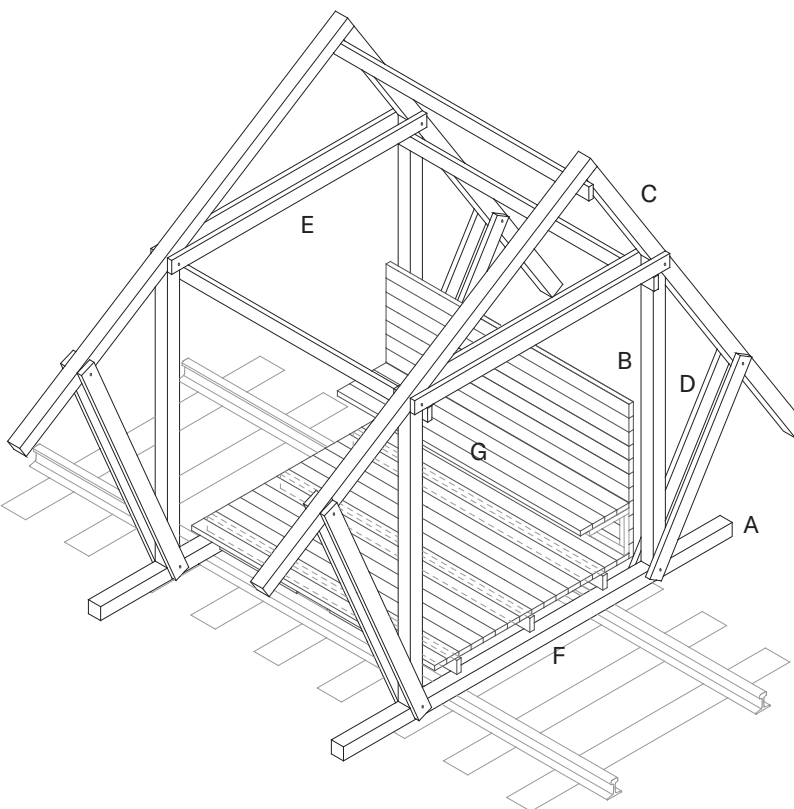
- 5 x "Wooden Beam"
- 35 x "Wooden Plank / 2"
- 33 x "Wooden Slat / 1"
- 12 x "Trapezoidal Profile / Steel"
- 2 x "Trapezoidal Profile / 2'35 m"
- 2 x "Trapezoidal Profile / 2'63 m"
- 6 x "Chipboard"

MATERIALS FROM OTHER UNITS (LEFTOVERS)

- 1 x "Wooden Plank / 2" from Unit 1

LEFTOVERS REUSED FOR OTHER COMPONENTS

- 4 x leftovers of "Wooden Plank / 2"
- 8 x leftovers of "Wooden Beam"



General Axo Unit 02



Model Image of Unit 02

UNIT 03

- ELEMENTS
- A_Mudsill made from "Wooden Plank" 25 x 4'5 cm
 - B_Columns made from "Table leg" 2,5 x 2'5 cm
 - C_Beams made from "Rafter" 14 x 8 cm
 - D_Knee brace made from "Table leg" 2,5 x 2'5 cm
 - E_Tie beam made from "Wooden Plank" 12'5 x 4'5 cm
 - F_Floor joist made from "Wooden Plank" 12'5 x 4'5cm
 - G_Interior finishes from "Acoustic Panel"

MATERIALS FROM CATALOGUE (3 frames)

- 6 x "Rafter"
- 15 x "Wooden Plank / 2"
- 22 x "Wooden Slat / 1"
- 12 x "Trapezoidal Profile / Steel"
- 2 x "Trapezoidal Profile / 2'35 m"
- 2 x "Trapezoidal Profile / 2'63 m"
- 24 x "Acoustic Panel"
- 174 x "Table leg"

MATERIALS FROM OTHER UNITS (LEFTOVERS)

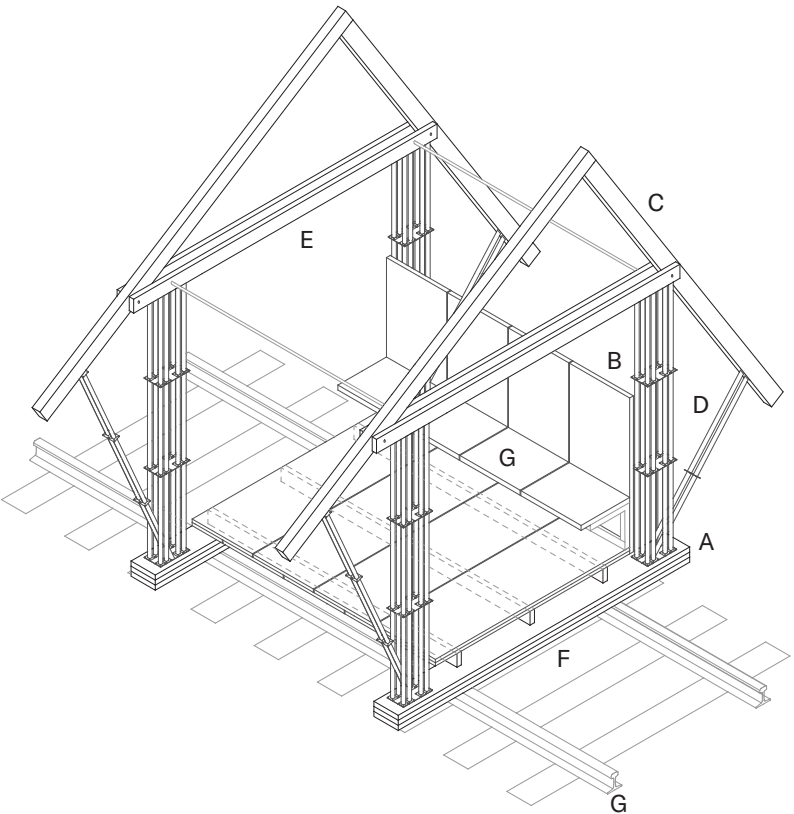
- 7 x "Rafter" from Unit 1

LEFTOVERS REUSED IN OTHER UNITS

- 1 x "Wooden Plank / 2" reused in Unit 01

LEFTOVERS REUSED FOR OTHER COMPONENTS

- 3 x leftovers of "Wooden Plank / 2"
- 8 x leftovers of "Acoustic Panel"



General Axo Unit 03



Model Image of Unit 03

UNIT 04

- ELEMENTS
- A_Mudsill made from "Wooden Plank" 25 x 4,5 cm
 - B_Columns made from "Parquet", various dimensions
 - C_Beams made from "Parquet", various dimensions
 - D_Knee brace made from "Parquet", various dimensions
 - E_Tie
 - F_Floor joist made from "Wooden Plank" 12'5 x 4'5cm
 - G_Interior finishes from "Wooden Plank" 12'5 x 4'5 cm

MATERIALS FROM CATALOGUE (4 frames)

- 16'80 m² "Parquet"
- 9 x "Wooden Plank / 2"
- 33 x "Wooden Slat / 1"
- 12 x "Trapezoidal Profile / Steel"
- 4 x "Trapezoidal Profile / 2'35 m"
- 2 x "Trapezoidal Profile / 1'85 m"

MATERIAL FROM WISHLIST (4 frames)

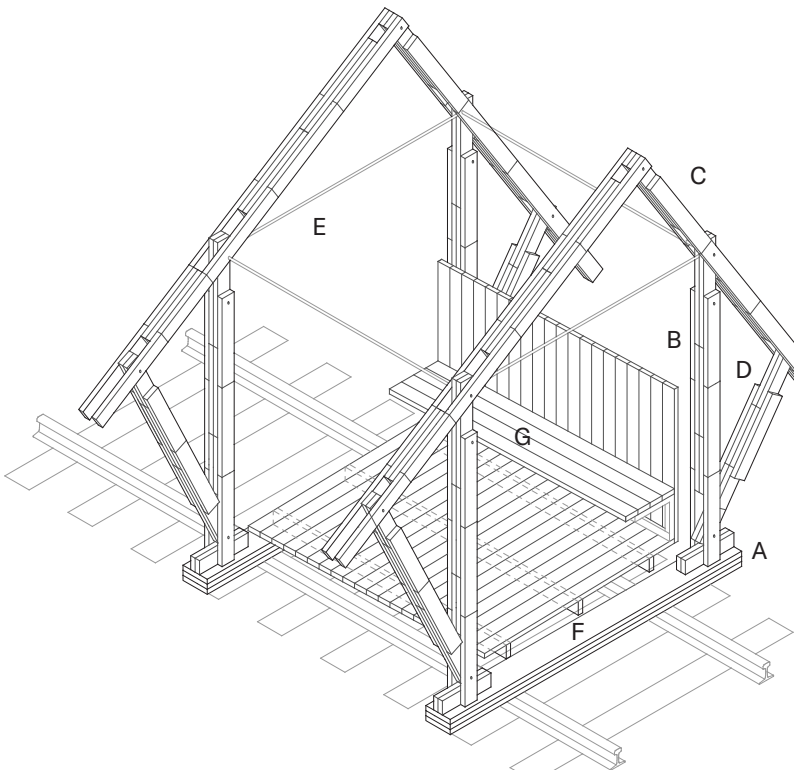
- 13 x Steel tie rod

MATERIALS FROM OTHER UNITS (LEFTOVERS)

- 2 x "Wooden Plank / 2" from Unit 1

LEFTOVERS REUSED IN OTHER UNITS

- 12 x "Wooden Plank / 2" reused in Unit 01



General Axo Unit 04



Model Image of Unit 04

UNIT 05

- ELEMENTS
- A_Mudsill made from "IPE 120"
 - B_Columns made from "IPE 120"
 - C_Beams made from "IPE 120"
 - D_Knee brace made from "Grating"
 - E_Tie
 - F_Floor joist made from "IPE 120"
 - G_Interior finishes from "Grating" and "Spiral Duct"

MATERIALS FROM CATALOGUE (4 frames)

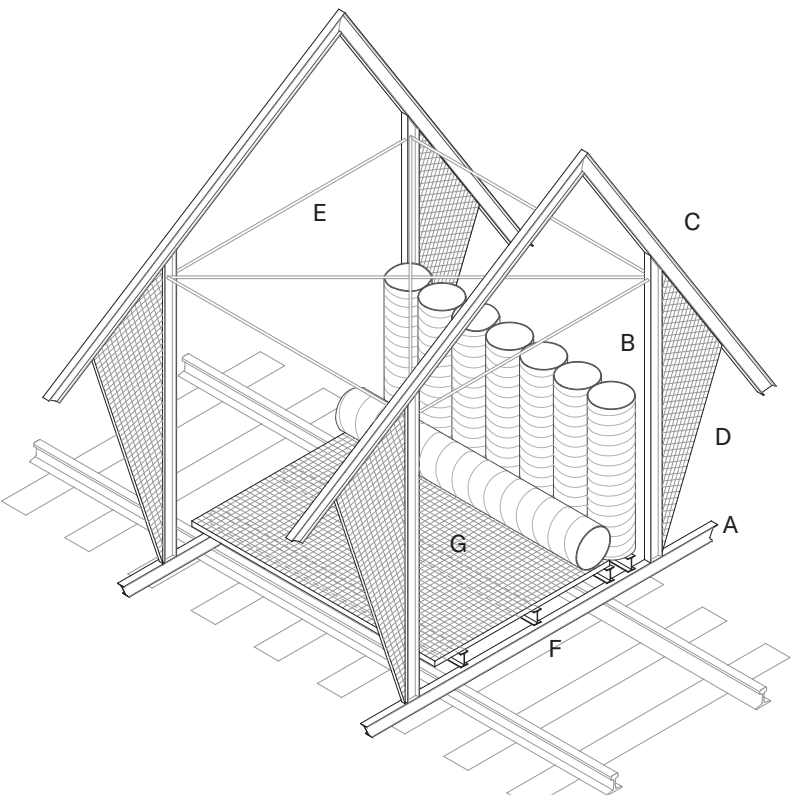
- 29 x "IPE 120"
- 12 x "Spiral Duct"
- 9 x "Grating"
- 6 x "Lattice Structure"
- 12 x "Trapezoidal Profile / Steel"
- 2 x "Trapezoidal Profile / 2'35 m"
- 2 x "Trapezoidal Profile / 1'85 m"

MATERIAL FROM WISHLIST (4 frames)

- 19 x Steel tie rod

LEFTOVERS REUSED FOR OTHER COMPONENTS

- 8 x leftovers of "IPE 120"
- 4 x leftovers of "Grating"



General Axo Unit 05



Model Image of Unit 05

UNIT 06

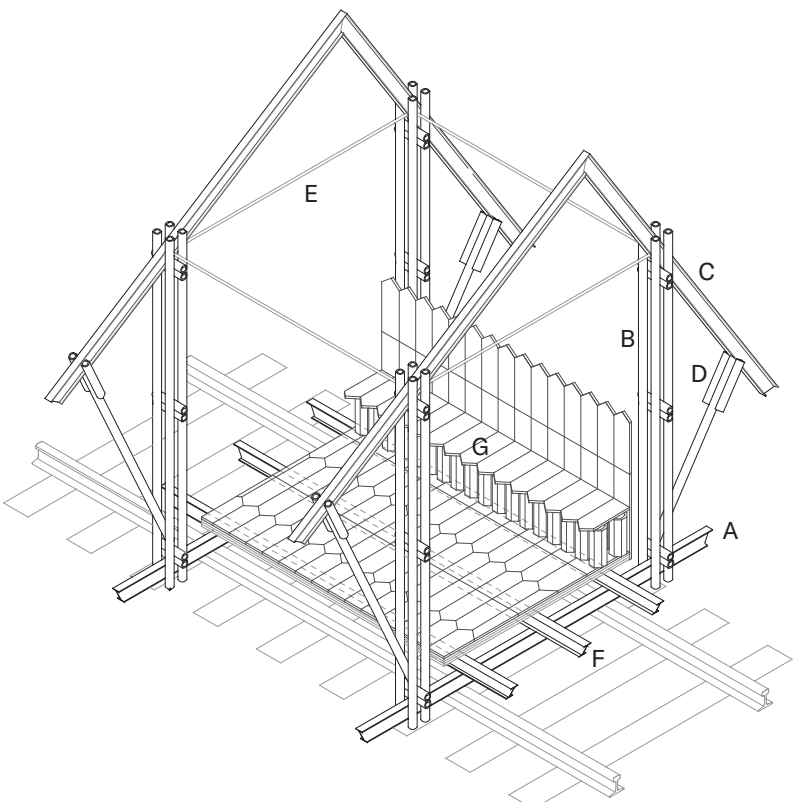
- ELEMENTS
- A_Mudsill made from "IPE 120"
 - B_Columns made from "Cardboard Tube" ø 6'5 cm
 - C_Beams made from "IPE 120"
 - D_Knee brace made from "Cardboard Tube" ø 6'5 cm
 - E_Tie
 - F_Floor joist made from "IPE 120"
 - G_Interior finishes from "Bavertail Tile" and "Clay Tube"

MATERIALS FROM CATALOGUE (3 frames)

- 15 x "IPE 120"
- 30 x "Cardboard Tube"
- 9 x "Grating"
- 6 x "Lattice Structure"
- 12 x "Trapezoidal Profile / Steel"
- 2 x "Trapezoidal Profile / 2'35 m"
- 2 x "Trapezoidal Profile / 1'85 m"

MATERIAL FROM WISHLIST (3 frames)

- 7 x Steel tie rod
- 14 x Steel purling



General Axo Unit 06



Model Image of Unit 06