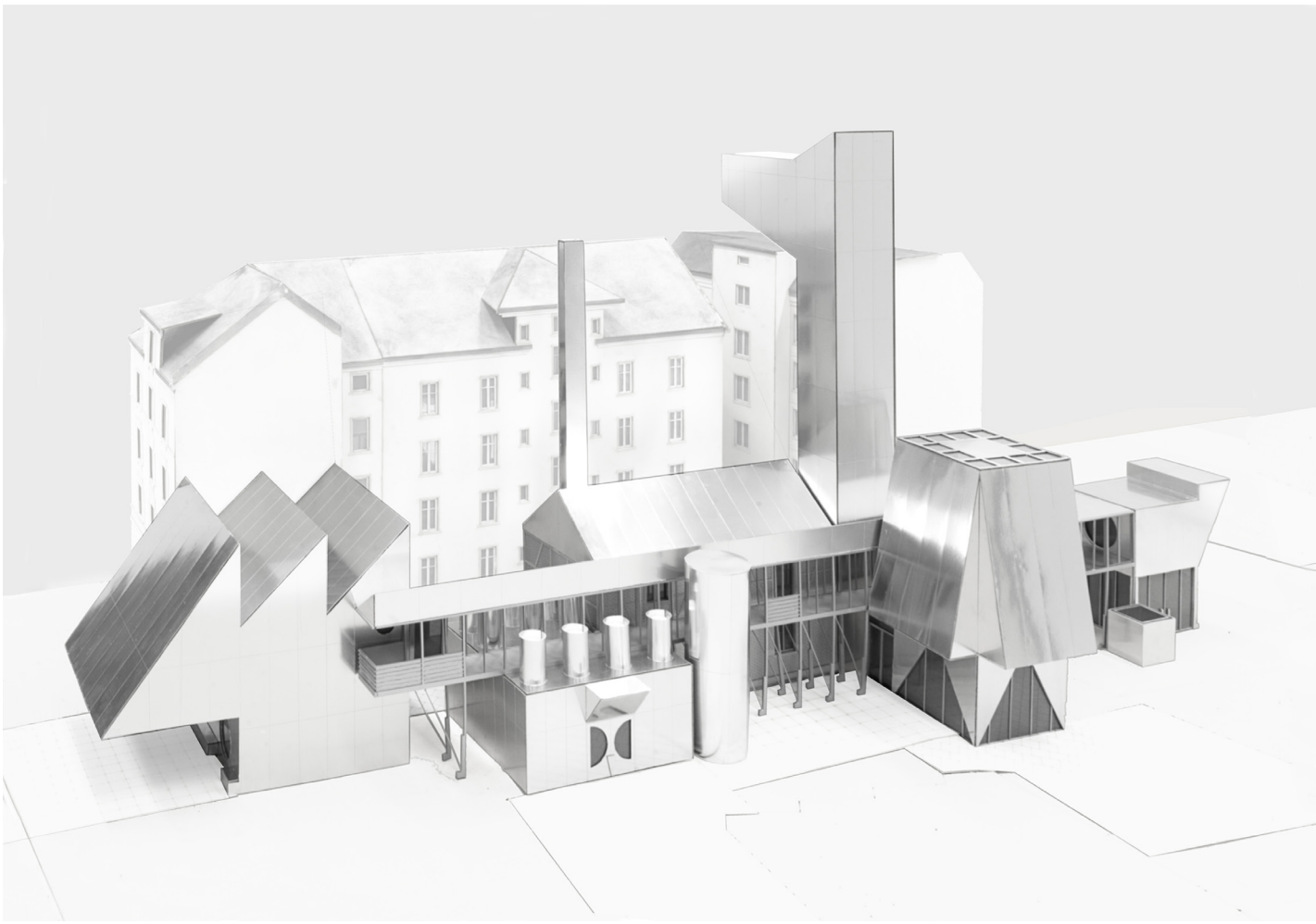


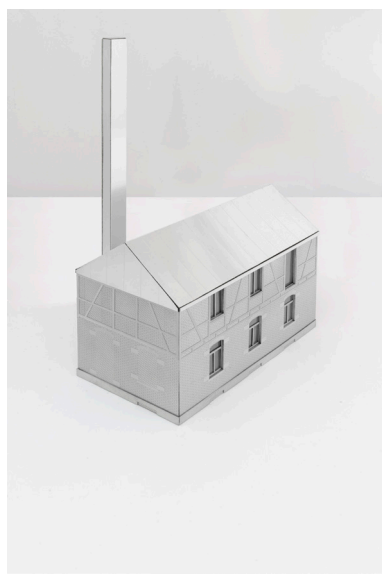
# Wrought-iron Workshop

## A Machine for a Postindustrial Society

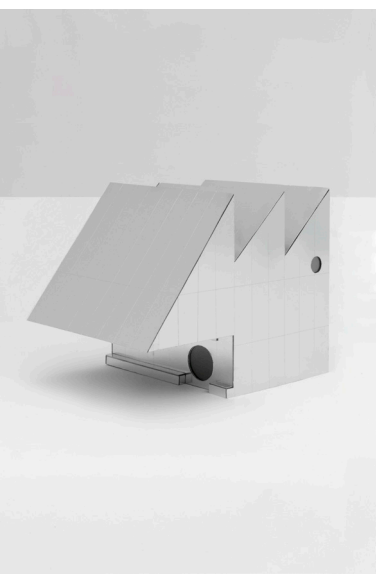
Thesis Matthias Annen  
ETH Zurich December 2016, Prof. Adam Caruso  
Theory of Architecture: Prof. Laurent Stalder



Isometric overview model 1-50



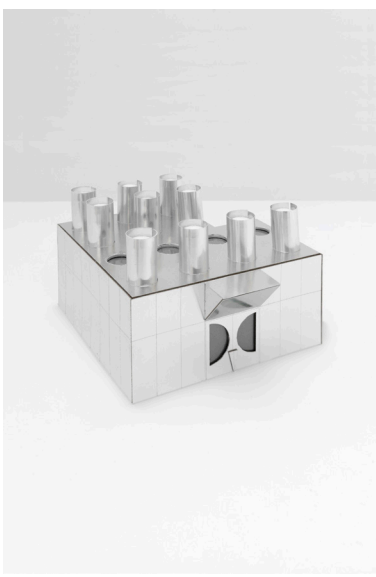
**Old foundry**  
The old foundry has become too small and out-dated to keep up with time. Nowadays the precise machine work and high-tech methods are new tools to meet high expectations of the artists' and designers' creations. Moreover the market demands a flamboyant mise-en-scène in order to sell more than a physical product to raise the value of today's craftsmanship. Extensions will reverse the life of the old foundry again.



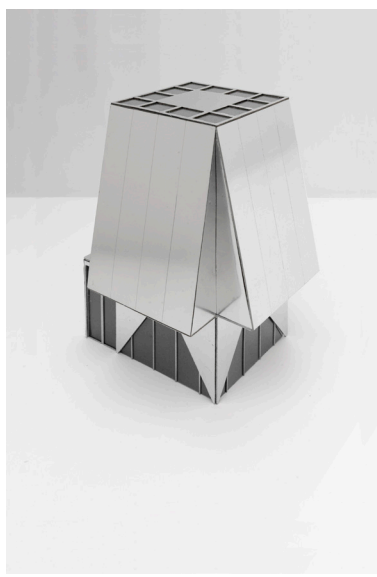
**Showroom on Kernstrasse**  
A few finish himself a new home in a chic site backyard of Langstrasse. Here the city never stops buzzing and making mystical sounds. In a hummer and canning way he sticks his nose out of the backyard over the pavement and welcomes the visitors of the new foundry personally at the entrance, allowing visitors to come by car.



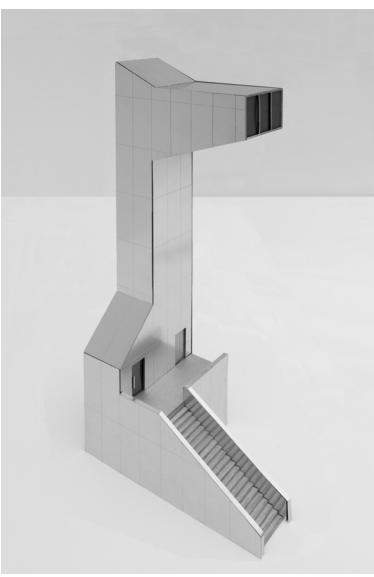
**Catwalk**  
1885, "long, narrow fantasy" from cat (cat) is still (cat) in reference to each narrowness of passage one has to cross carefully, as a cat walks. Originally of ships and theatrical back-stages. Application in fashion show runway is by 1942. A brief runway out of steel connects all the extensions on the upper level. New views and curiosities will continuously open up to the visitors.



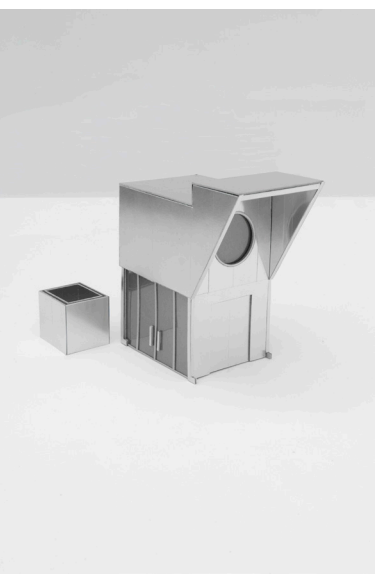
**Innovation lab**  
The innovation lab never sleeps. Here the new automated machines, 3D-Printers and robots work round the clock. During the day it reflects its surroundings. At night when Langstrasse buzzes in ecstasy, the steel cracks from its daylight, its eyes glowing.



**Showroom in the backyard & Training room**  
The training room on the ground floor with its transparent facade opens up to the courtyard. Above there is a library of metal craftsmanship combined with a showroom. This space with a gold-like aluminum plate shelve shines all in gold.



**Outlook**  
An accessible Periscope opens up the view out of the backyard. Having reached it's top you will enjoy a view over the smoking roofs of Zurich. Up here you will also find the best cocktails in Zurich. Nothing else.



**Showroom on Langstrasse**  
Entering the showroom from Langstrasse a closed metal door in the shop front gives access to the entrance where the visitor can first look deep into the backyard. Having passed the receptionist this showroom offers space for furniture of contemporary artists and the administration. Finally one enters an elevator box mirroring all in red steel, which gives access to the catwalk on the upper level.

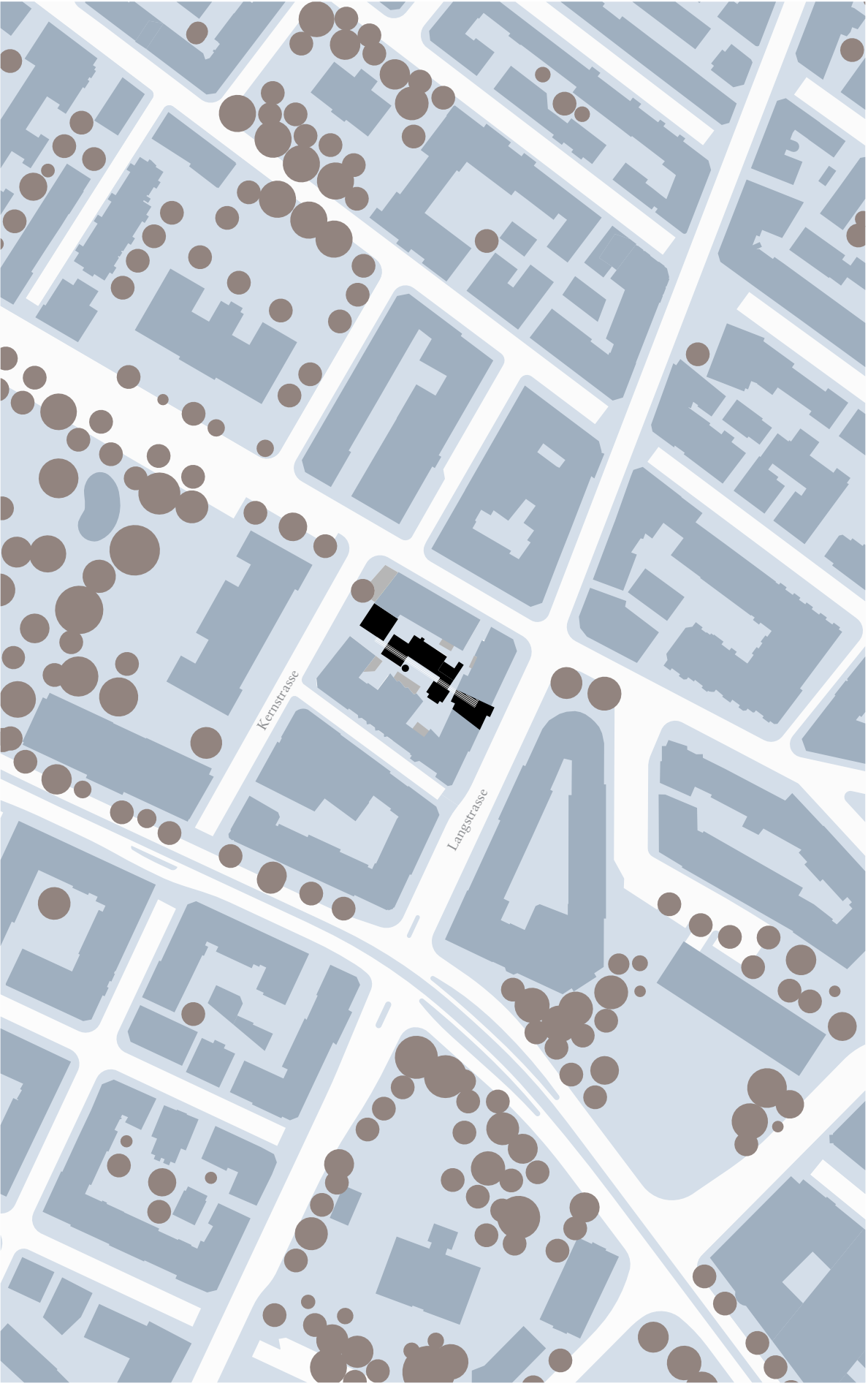
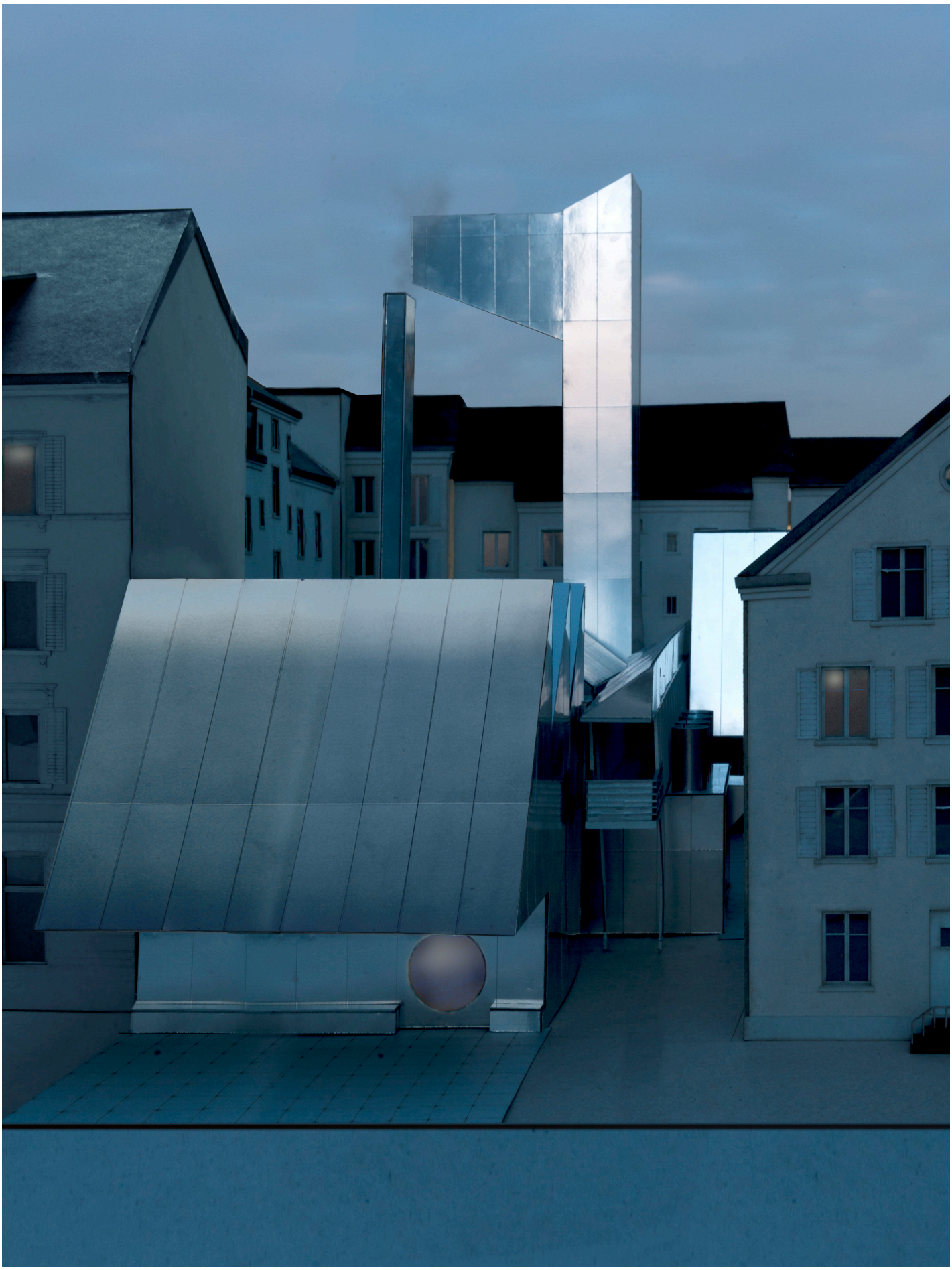


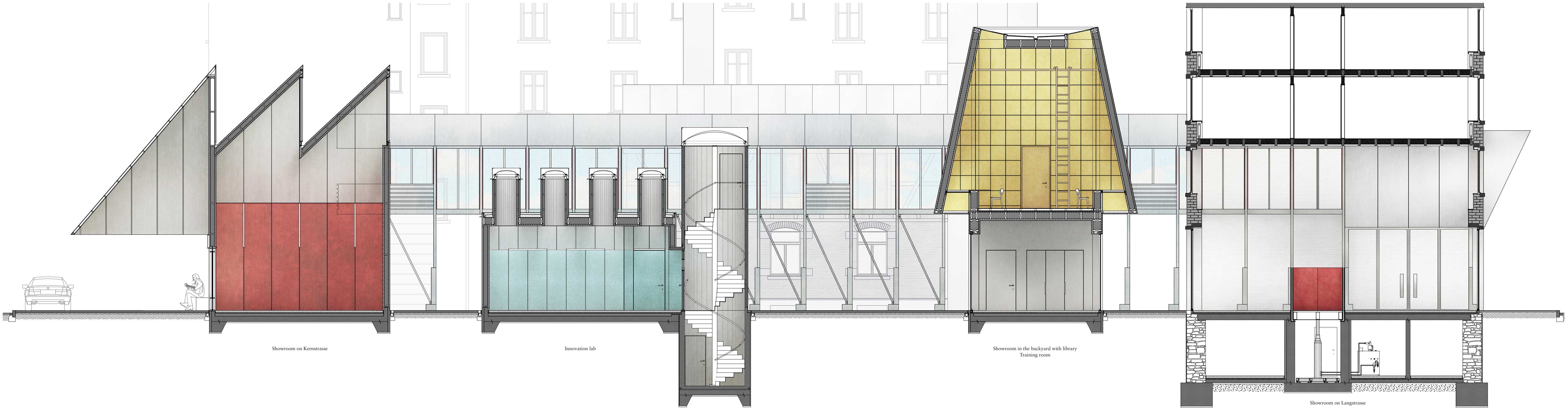
Figure ground plan with Langstrassen, Zurich (orig. 1-1000) 0 25m



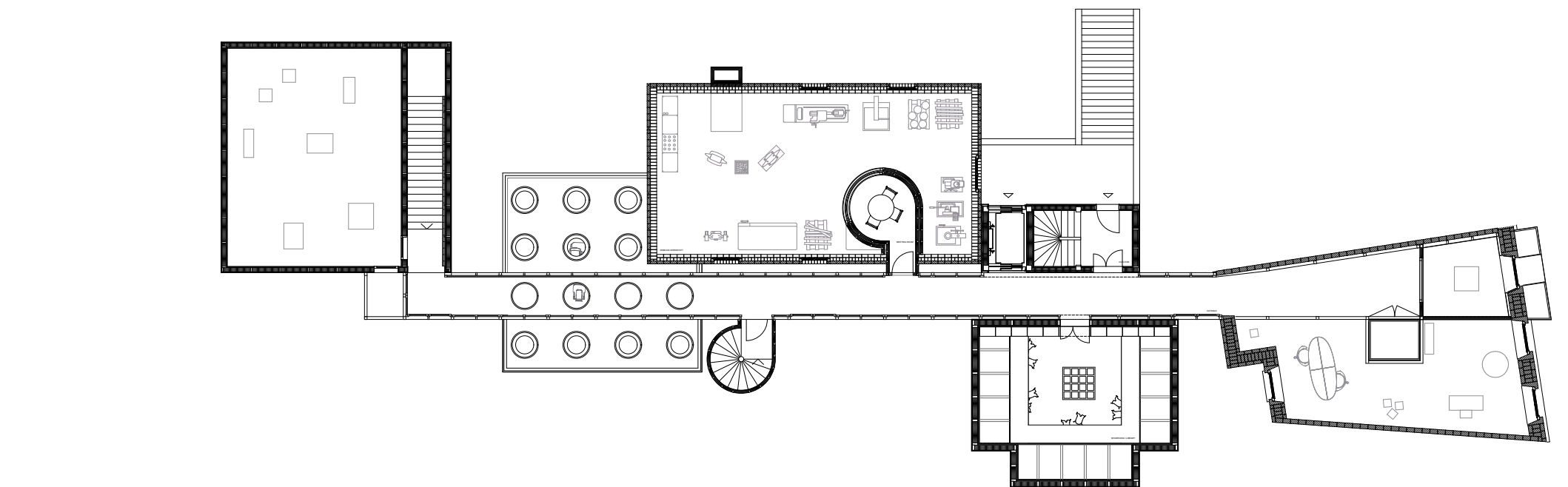
Evening view from Kernstrasse



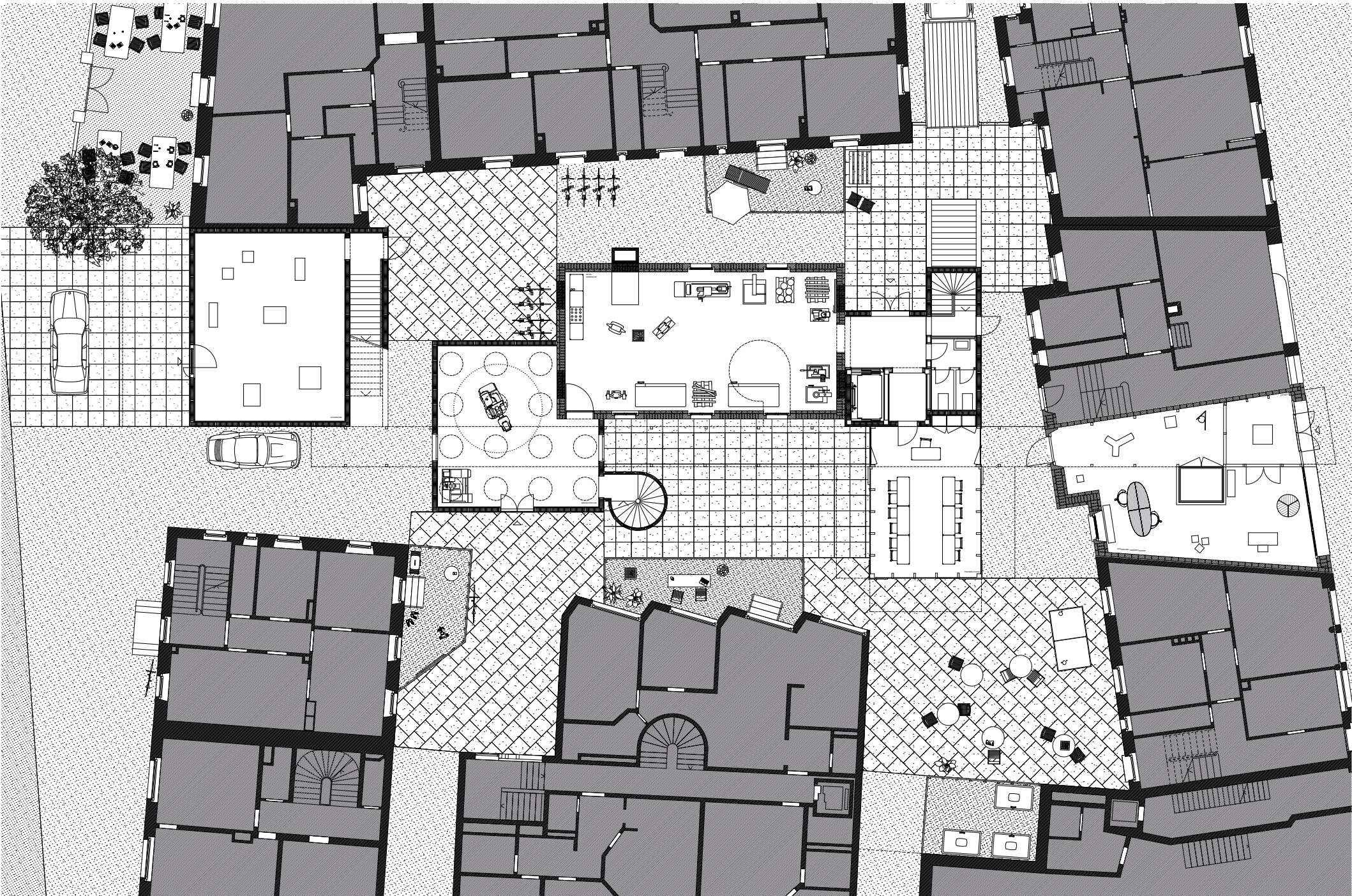
Showroom of the Gallery at Kernstrasse - Exhibited are the metal furnitures by artists, in this case by Donald Judd - The Lighting is an homage to Dan Flavin



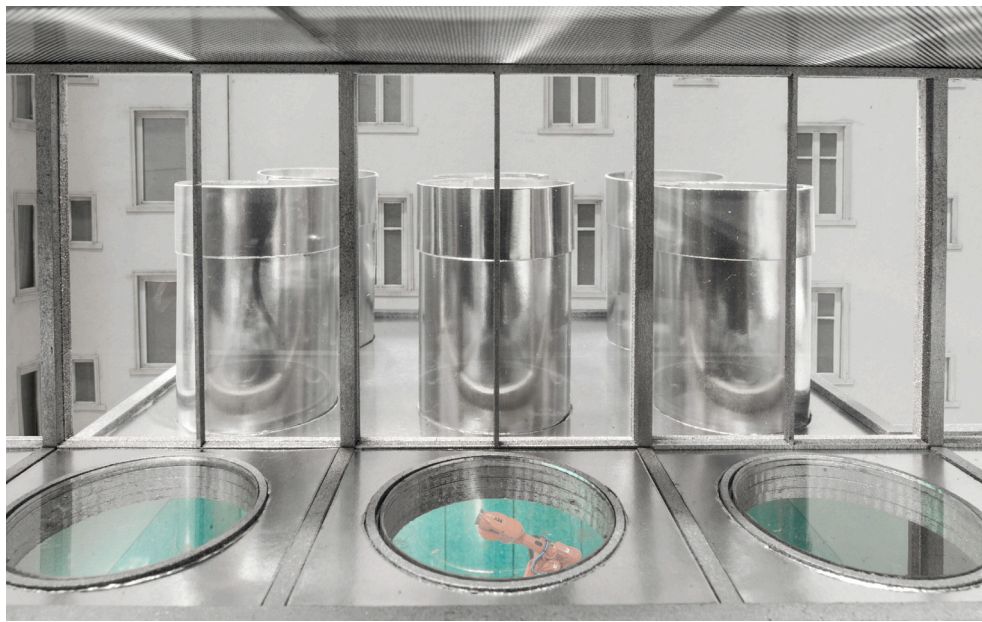
Longitudinal section with construction (orig. 1-20) 0 2m



First floor plan (orig. 1-50) 0 4m



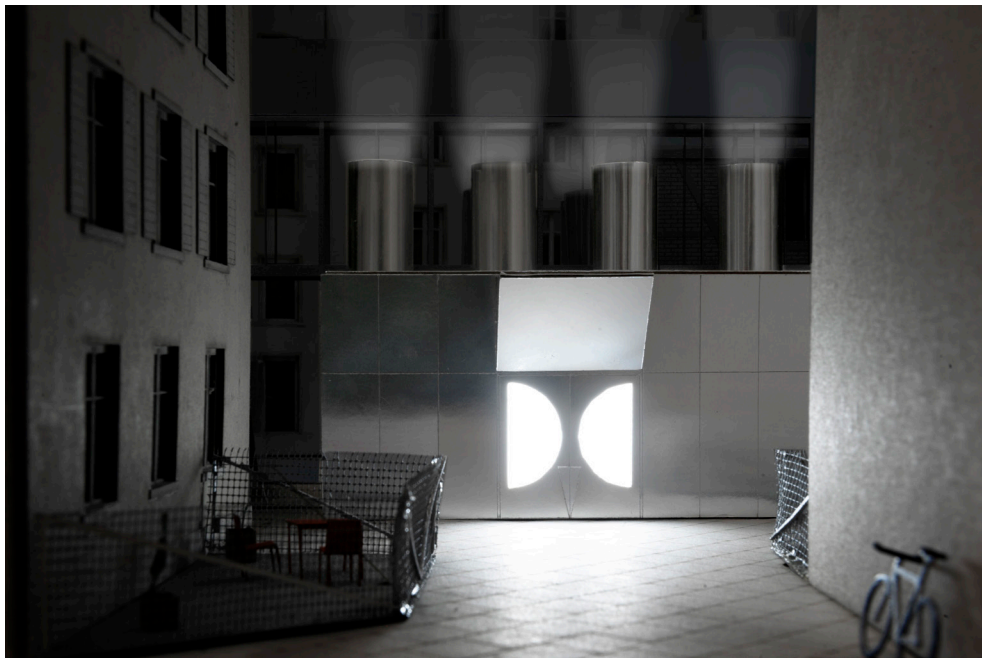
Ground floor plan (orig. 1-50) 0 4m



View from the catwalk into the innovation lab



View over the smoking rooftops from the overlooks public bar



The machines of the innovation lab are working day and night



Entrance to Showroom at Kernstrasse with public loggia



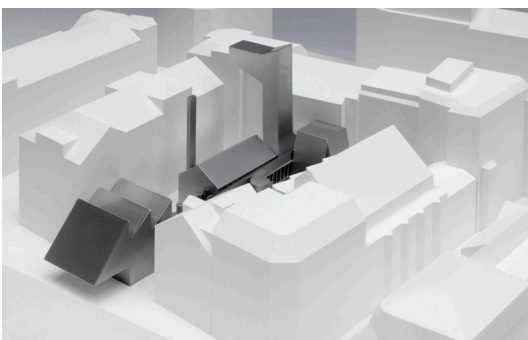
Entrée showroom Langstrasse with view into backyard and up to the catwalk



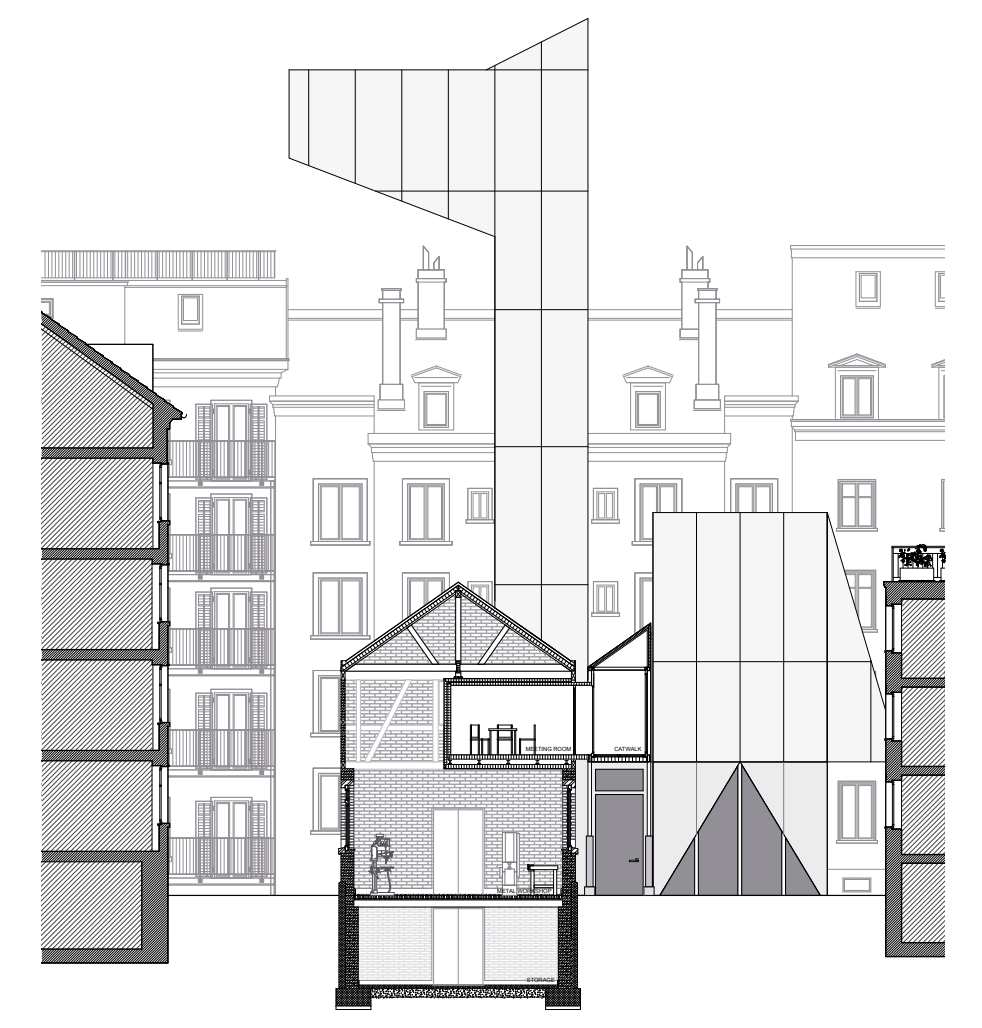
Old foundry workshop with intrusion of the meeting room



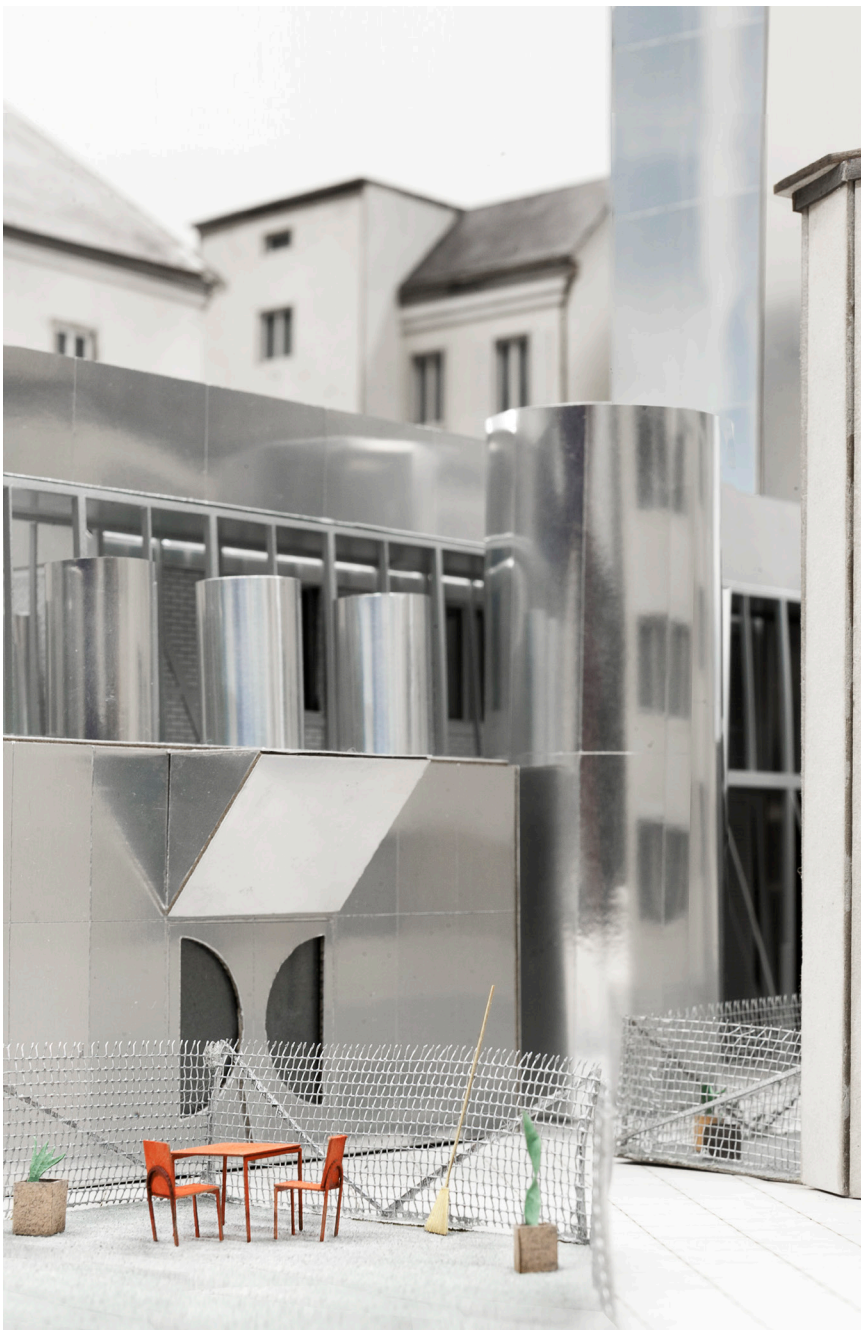
Longitudinal elevation / Right side: Section through old foundry and the meeting room (orig. 1-100)



Model 1:200, coated in iron oxide



Entrance showroom Kernstrasse with drive-in



Entrance innovation lab with neighbouring gardens



Outdoor space in the backyard with artwork by Richard Deacon