





Flubacher_Nyfeler_Partner
Architekten

OFFICE ARCHITECTURE

HEADQUARTERS EGK-GESUNDHEITSKASSE
A SMALL MIRACLE OF SUSTAINABILITY
LAUFEN / SWITZERLAND / 2018 - 2021



CONTENT

- ⁰⁸ **A** Design brief and site considerations
- ¹⁸ **B** Location
- ²⁴ **C** Architecture and use of space
- ⁶⁰ **D** Appearance and finish
- ⁷⁰ **E** Sustainability, Energy Conservation and Innovation
- ⁷⁸ **F** Safety and security

- 1.a DESCRIBE THE DESIGN BRIEF INCLUDING THE CLIENT'S MAIN REQUIREMENTS INCLUDING OCCUPANCY AND FACILITIES REQUIRED.
- 1.b SHOW CONCEPTS, SKETCHES AND ANY EVOLUTION IN THE DESIGN PROCESS; MENTION WHAT INFLUENCED OR INSPIRED THE DIRECTION OF DESIGN.

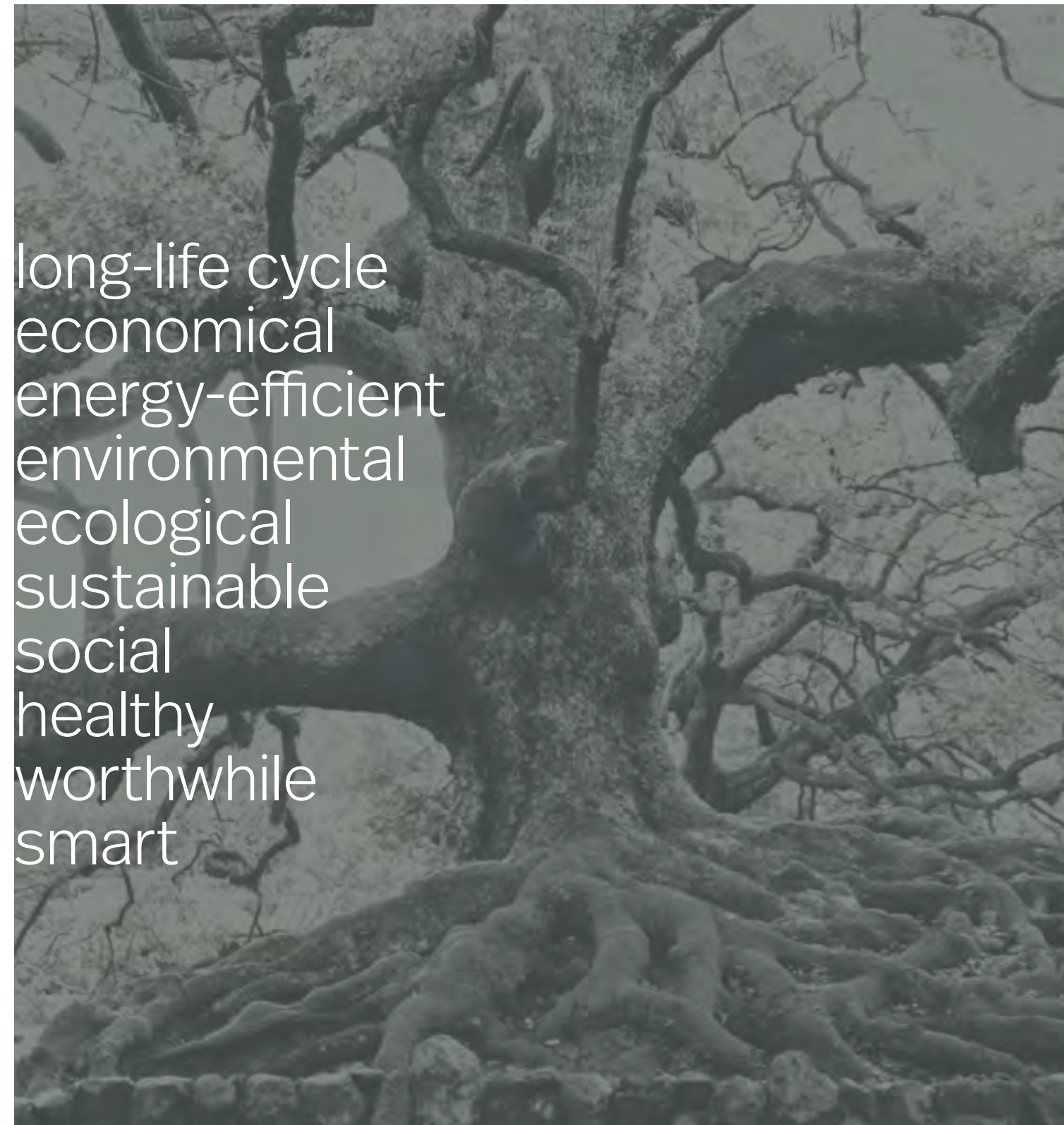
«The new main building reflects the values of EGK. The successful combination of natural materials and state-of-the-art technology stands for the promising combination of complementary and conventional medicine.»

Dr. Reto Flury Managing Director / EGK Health Insurance

Design brief and site considerations

A





long-life cycle
economical
energy-efficient
environmental
ecological
sustainable
social
healthy
worthwhile
smart

Design brief and site considerations

1 a.

The EGK Health Insurance Company is a Switzerland-wide health insurer founded in 1919 with its headquarters in Laufen BL. The new building will bring together four locations under one roof. The EGK is creating the basis for the optimization of internal processes and the strategic expansion of the company, but above all, the new building should be a healthy working environment that promotes direct exchange between employees.

A high level of health awareness and the associated responsibility for their employees, as well as the desire to take on a role model function towards society, should also be reflected in their new headquarters. Therefore, the client's wish was to develop a sustainable and environmentally friendly building that is also economically in line with their corporate values.

MODESTY We don't want a luxury or prestige building, but one that is inexpensive to build and maintain. The rooms should be attractively designed, especially the agency and the Reception area for the – based on experience – few visitors per day.

HEALTH AWARENESS Our employees should feel comfortable in the new building even in extreme temperatures (shading). For the well-being of our employees, we strive for high-ceilinged rooms whenever possible.

NATURALNESS The building should embody a natural appearance and be partly built with wood as a hybrid construction. But we don't want any extreme solutions here either. Generous greening of outdoor areas and the targeted design of the change for the natural appearance are desired. The preservation of existing trees (copper beech) is also desirable, if this is possible.

ENVIRONMENTAL COMPATIBILITY We protect the environment by reducing energy consumption with appropriate measures avoid them or cover them with renewable energy to a reasonable extent. We are not aiming for Minergie certification. We prefer to use materials that are easy to recycle. Building material from the area, for example Jura limestone floor slabs in the reception area.

CUSTOMER PRIVACY Particular attention must be paid to access and data protection. Employees in many departments process personal data that is particularly worthy of protection, which is also on screen masks must not be visible from public space. Access to the business premises of EGK, with the exception of the reception area, the multi-purpose room and the agency, is only possible after walking through one in special cases bypassable isolation system allowed.

FLEXIBILITY If the need for space decreases, each individual floor should be able to be partially or fully rented to third parties with as little adjustment effort as possible, primarily as business space, secondarily and, with greater effort, as living space.



indoor climate
ecological building
sustainable materials
smart equipment
interior design and
architecture
environment, energy
and water
ecosocial habitat



INSPIRATIONS FACADE Tectonic joining principle, depth staggering, arcing to traditional craftsmanship



ACT AS A MODEL FOR OTHERS The area of the EGK should offer people a place where they can pause, revitalize in nature and catch their breath.

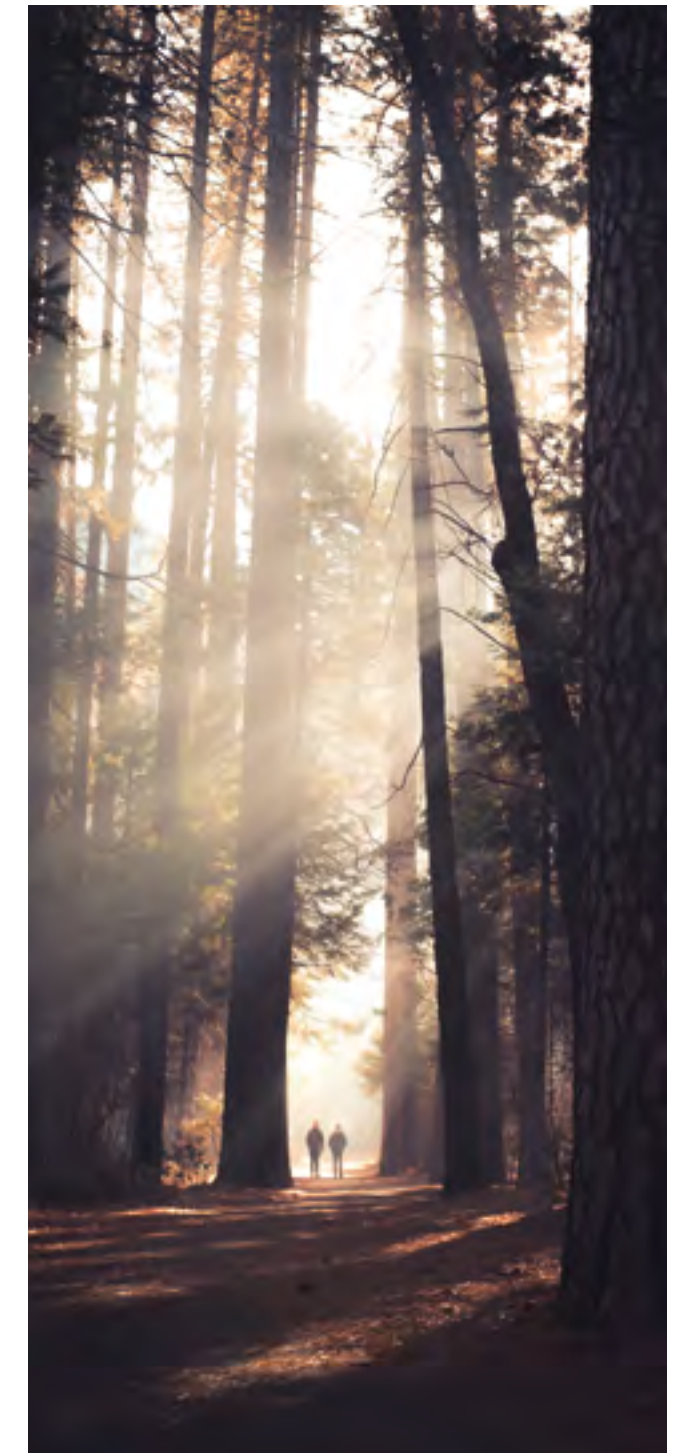


1 c.

THE TREE AS A MODEL. The oval staircase grows up like the inside of a strong tree trunk. The adjacent areas lead like branches to the individual offices.

From the inside, not only the structure and framework are refined, but also the materials and surfaces: The hardwood parquet in the corridor gives way to a textile carpet in the offices, and the rough, bark-like plaster of the core gives way to a fine plaster in the rooms.

The facade is much more than just the outermost layer. In skilled craftsmanship, rafters and spars are joined together to form surrounding canopies, creating a spatially diverse lattice. The deep reveals and roofs provided with fine standing seam sheets create privacy in the interior in addition to structural protection. The slat blinds, as movable elements, form the forest canopy as the outer closure.



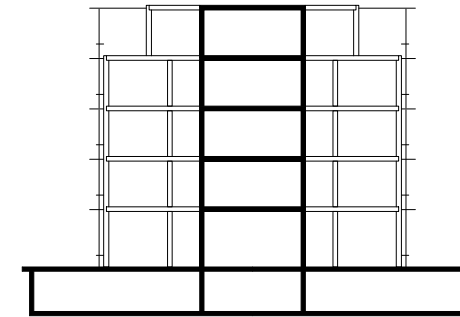


STANDARD FLOOR



GROUND FLOOR

1 c.



ATTIC



FACADE

The client-approved design was selected because it is inspired by the tree, which symbolizes the EGK's commitment to health and sustainability.

Further more the clear and robust structure offers great flexibility for now and future changes in use, room occupancy, and configuration. The areas can be further divided or large open office spaces can be created.

The design also incorporates elements that promote a healthy and efficient work environment with fresh air and natural light as well as as the oval staircase that encourages employee interaction and the use of environmentally friendly materials.

Bicycles can be conveniently parked in the car park, there are showers for refreshment after exercise and e-cars can be charged with energy while parking.



1.a PROVIDE DETAILS OF THE LOCATION AND POSITION OF THE DEVELOPMENT.

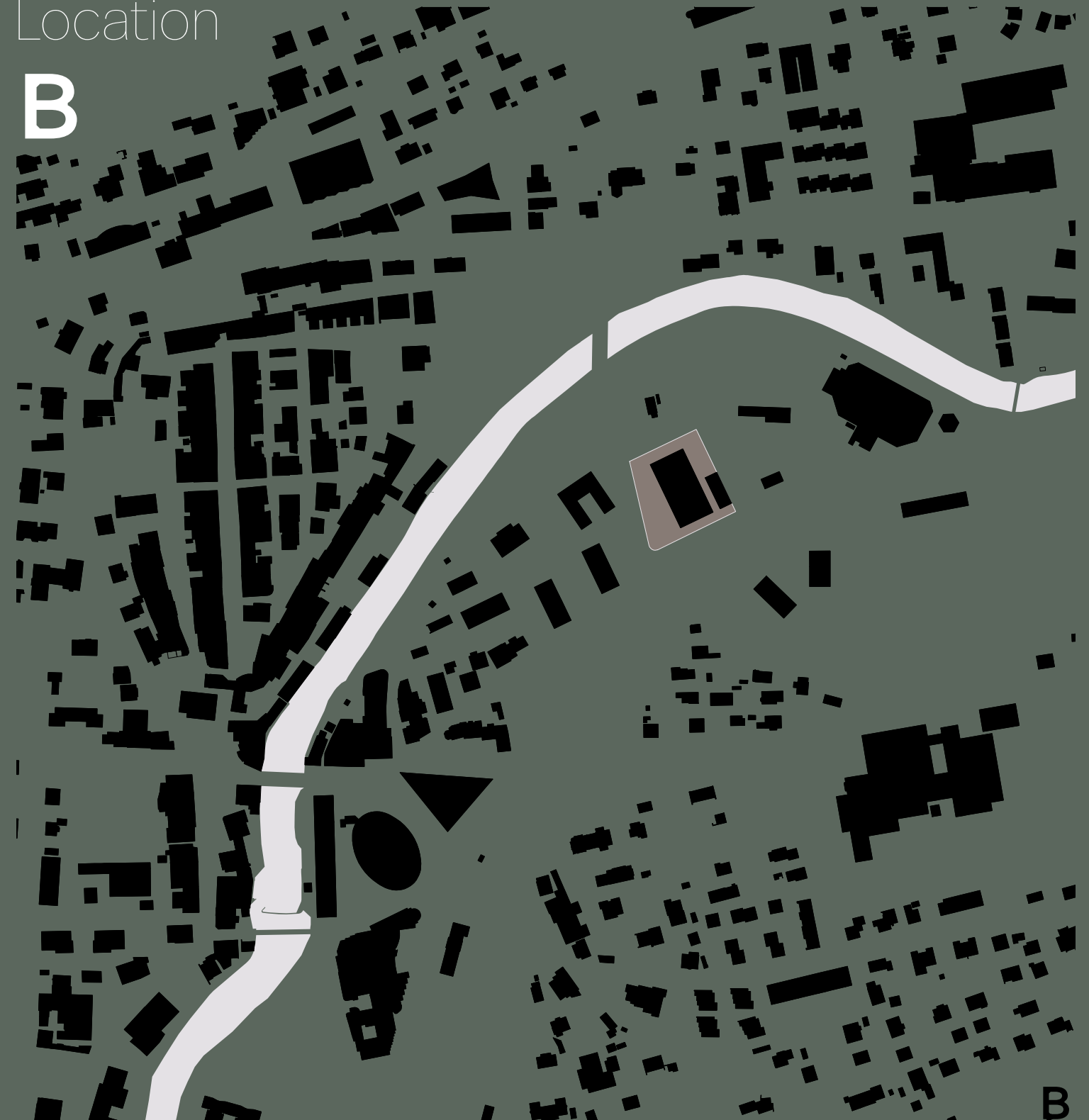
1.b PROVIDE OUTLINE DETAILS OF ANY SURROUNDING BUILDINGS AND IF YOUR DESIGN HAD TO FOLLOW ANY LOCAL VERNACULAR BUILDING STYLES OR REGULATIONS.

«Because of its prominent location on the important connecting axis between the train station and Baselstrasse, the EGK building is of central importance for the perception of our prosperous small town of Laufen. The dark building fills this formative role very well and still appears light with the delicately structured wooden facade. It is also of great importance for the further development of the new quarter on the Nau site, because later buildings can be based on it. The same applies to the high-quality outdoor space: The ecological open space concept allows a later continuation in the direction of the Birspark.»

Martin Hofer Head of Construction and Planning Laufen

Location

B



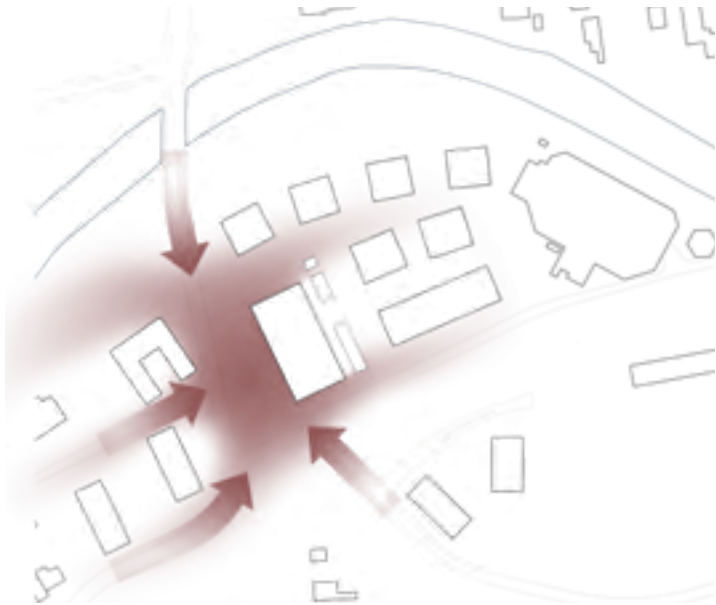
B



Urban development focal points Laufen



View from the train: the rails run past the building, the main station is not far. For the EGK, the perception of the building for train passengers was also important.



PRELUDE TO THE NEW QUARTER through the formation of a square, inviting gesture through space in front of the volume.

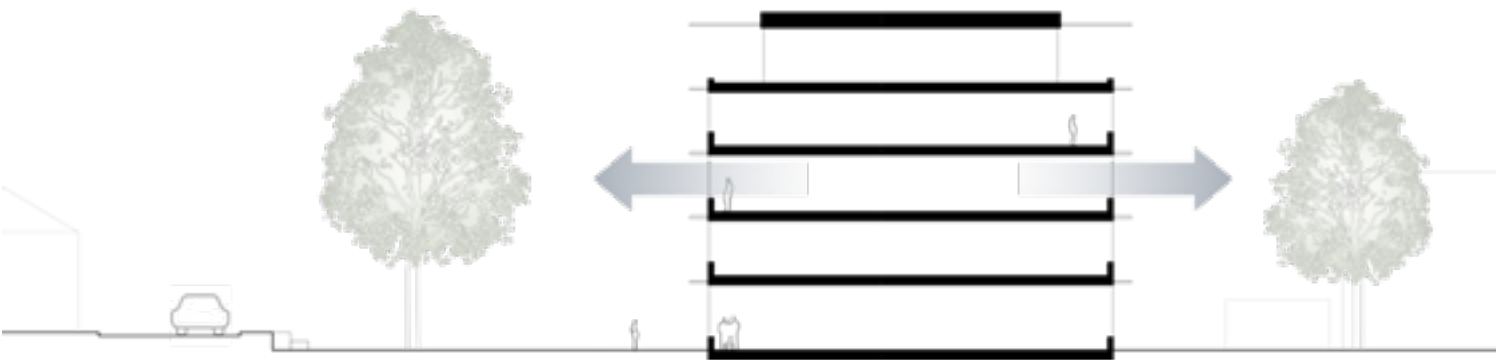
Location

1 a. The EGK site acts as a **THIRD URBAN FOCAL POINT**, alongside the old town and the train station quarter. It should interact closely with these without competing with them.

The new building explores the possibilities of the pre-defined building plot, deliberately occupying the north-eastern boundary line. The urban placement of the compact, orthogonal building follows the idea that the new building should be located in a park-like environment and be surrounded by nature and greenery on all sides.

1 b. The EGK administration was previously spread out across four different locations in Laufen. The new building on Naustrasse brings the employees back together. The architecture competition aimed to find a concept that aligned with EGK's holistic understanding of health and acted as a societal model.

The dense train station quarter, a series of tall residential buildings, and the tree-lined Birsufer river characterize the immediate neighborhood.



WORKING IN THE PARK AND NOT IN TRAFFIC
The new building does not dominate the street space.



1 c.

A PLACE FOR EVERYONE. The compact orthogonal building follows the planned building typology of the new neighborhood and creates a public space facing Naustrasse, which provides an attractive address for EGK and serves as an introduction to the future planned Nau neighborhood.

This inviting spatial gesture also expresses the modesty of EGK, not occupying the street edge dominantly, but offering people high-quality outdoor space and creating public space.

With the cleared forezone, existing trees are preserved and a natural filter is created between the heavily trafficked cantonal road and the office building, contributing to a pleasant atmosphere.

The main entrance is marked by a facade setback on the ground floor to the forecourt. Through the arcade, one enters the spacious reception area of EGK, which forms a unit with the publicly accessible agency.

Additional entrances in the arcade provide access to the central zone of the building, reserved for EGK employees and leading directly between the cores for vertical access to the building.

At the northern end is the entrance to the third-party tenant area. The underground garage is accessed through the adjacent building at the southeast corner.

1.a PROVIDE FLOORPLANS OF A SINGLE UNIT AND A PLAN OF THE DEVELOPMENT AS A WHOLE.

1.b SHOW THE KEY AREAS OF THE OVERALL DESIGN INCLUDING RENDERINGS OF THE FACILITIES, INCLUDING EXTERIOR AND INTERIOR.

Architecture and use of space

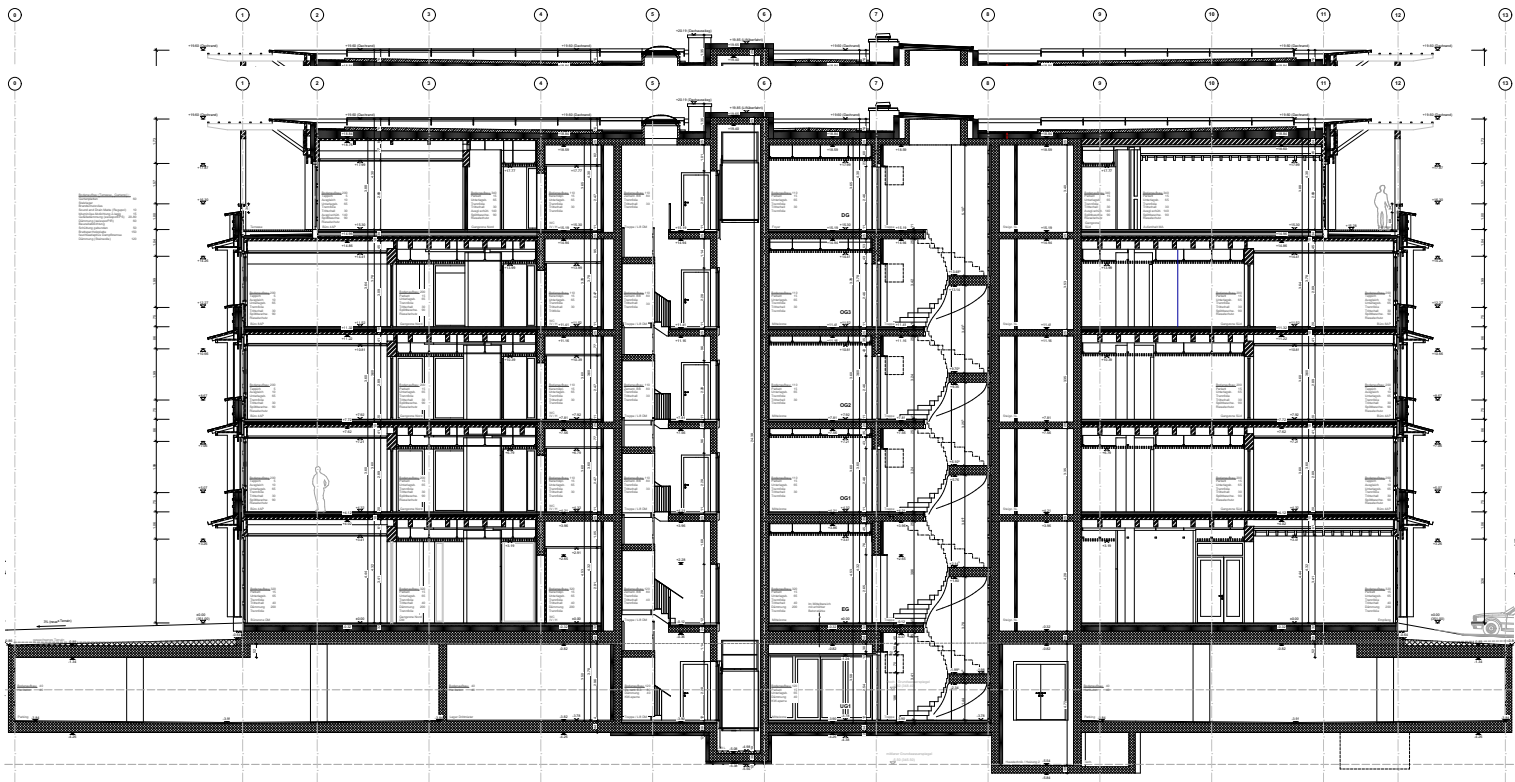
C

«With the move in July 2021 to the new headquarters in Laufen, in which four locations have been combined under one roof, an actual transformation process has been initiated. Not only should four different «cultures» be brought together, it is even more important to make intensive use of all opportunities for direct exchange between specialists and all new synergies that arise.»

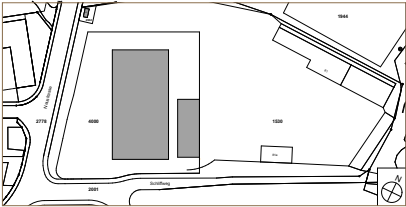
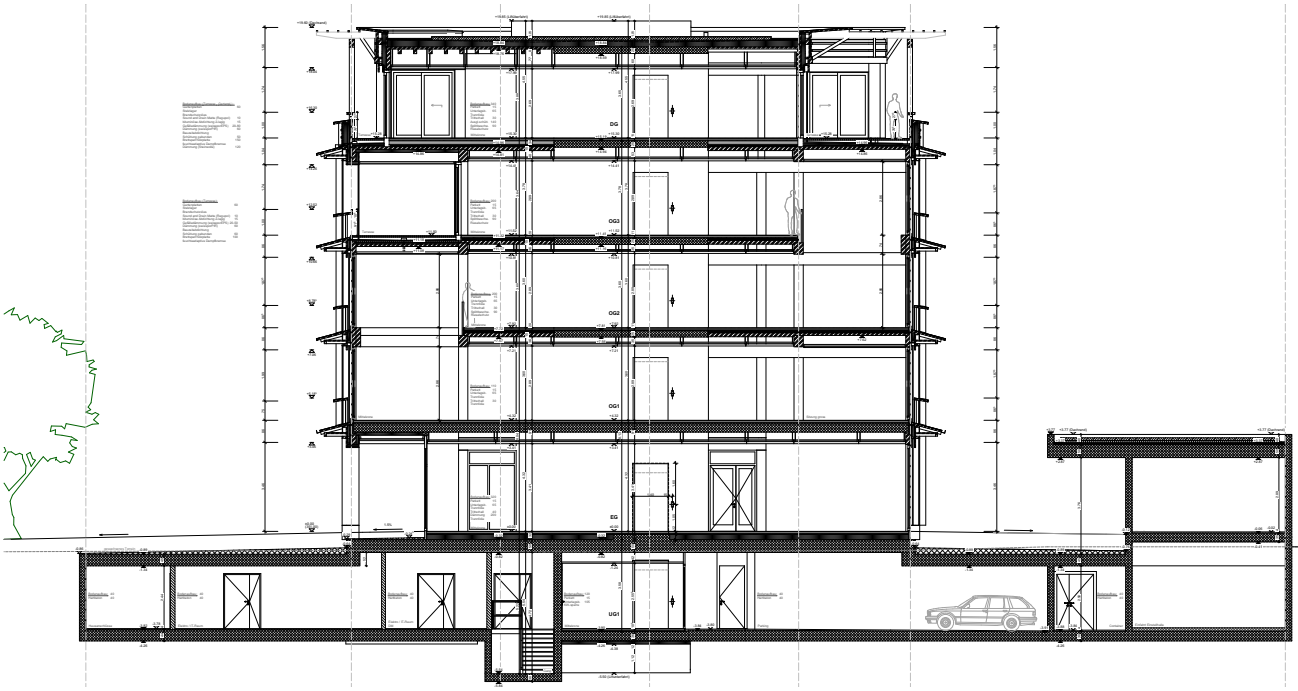
Dr. Reto Flury Managing Director / EGK-Gesundheitskasse

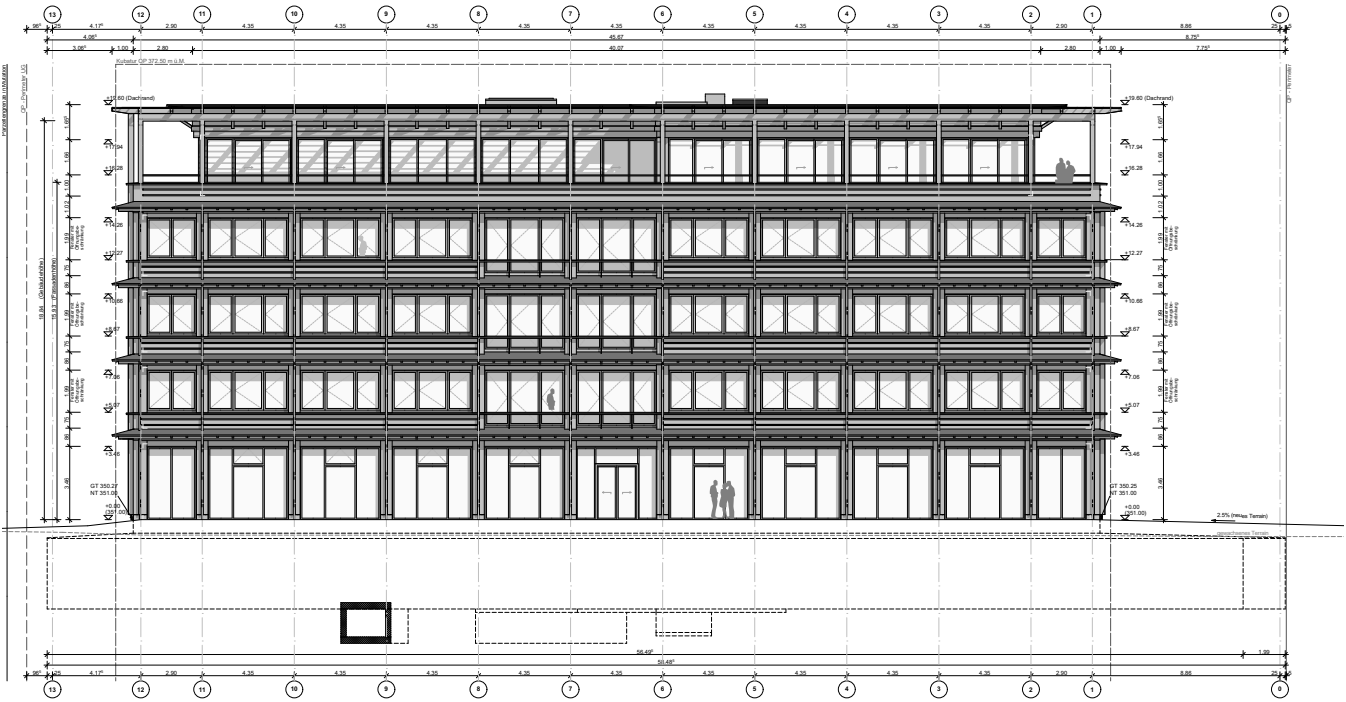


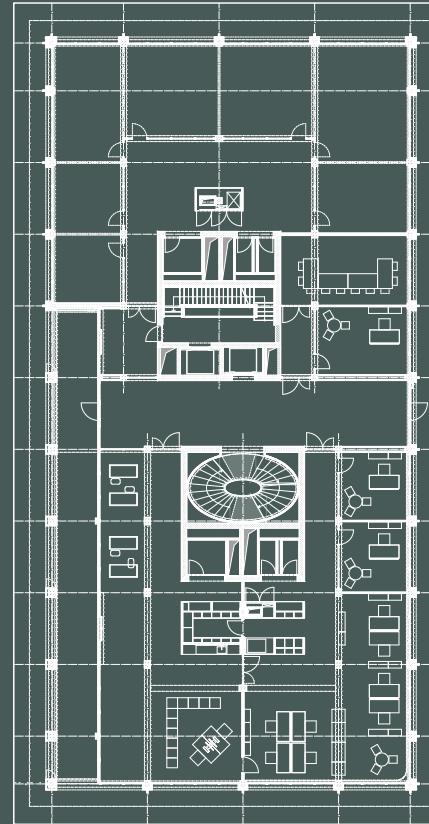
Architecture and use of space



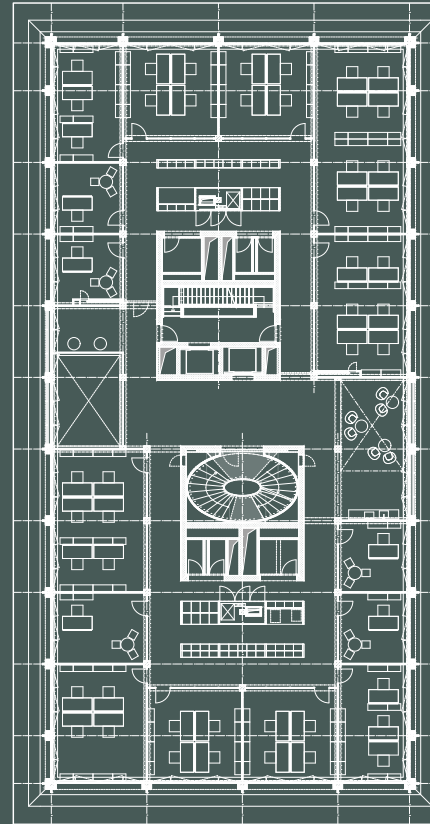
1.a FLOORPLANS OF THE DEVELOPMENT AS A WHOLE



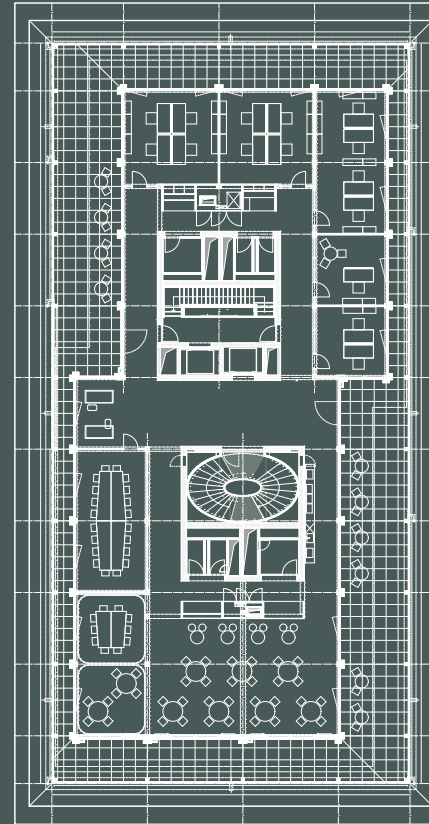




GROUND FLOOR



STANDARD FLOOR



ATTIC



Generous corridors lead to the office spaces, which are either three or four axes deep and thus provide high occupancy variability.



1.b

KEY AREAS The exterior will grow to the place to be. The natural design of the area promotes the biodiversity of the local flora and fauna and at the same time ensures an attractive, flourishing and lively outdoor space.

A square with a fountain and seating is an attractive place for employees and visitors to hang out. In the northern and eastern areas of the new building, retreat areas for employees were created in the form of seating niches.

The same healing plants can be found on the top floor garden!

We look forward to spring with thousands of blossoms.



KEY AREAS The top floor, to get together and enjoy the panorama and roof garden, bright hallways with offices with a good working atmosphere, open communication zones and the oval staircase that connects everything.

C



THE SPACIOUS OVAL SPIRAL STAIRCASE CONNECTS ALL LEVELS 3D cut cores



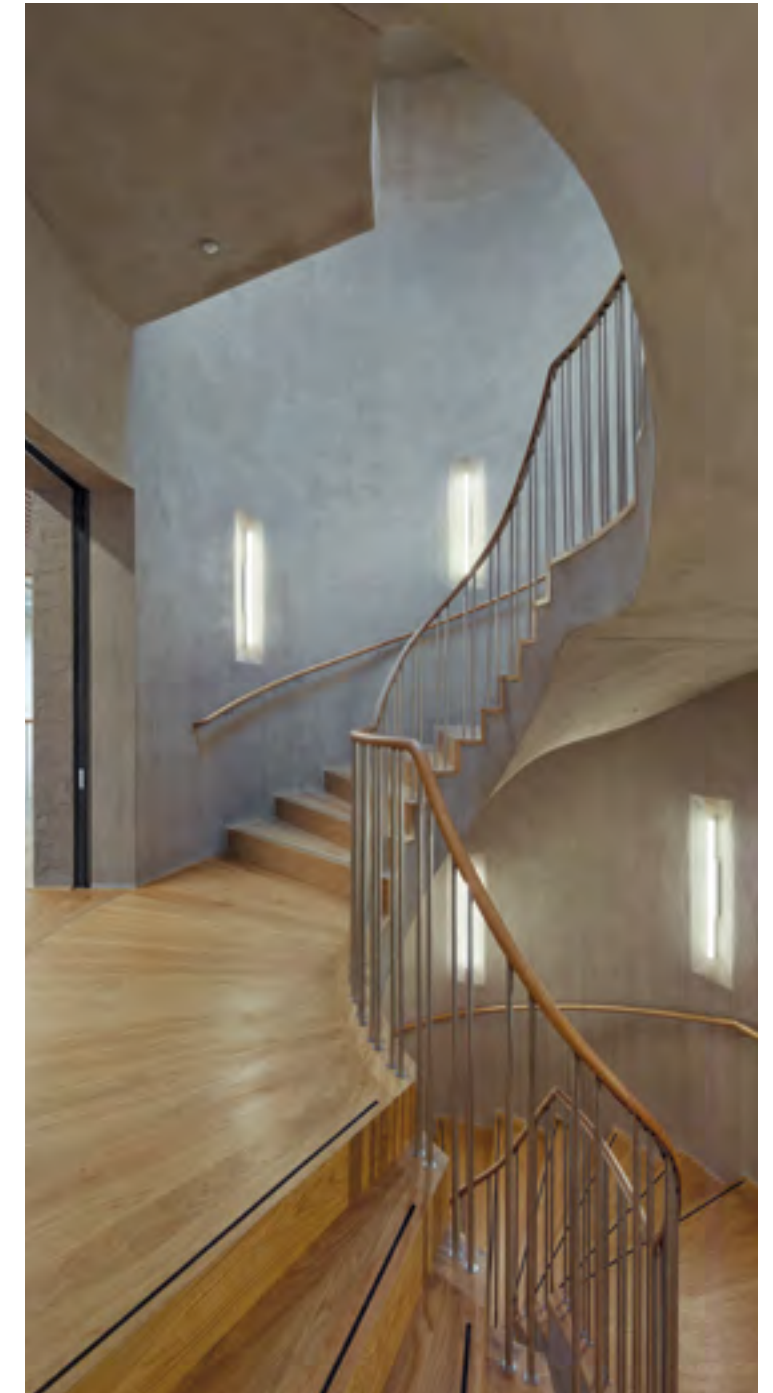
2.

In the EGK area, a spacious oval spiral staircase connects all levels from the basement to the attic.

On three upper floors, it forms the central access and communication zone with air spaces, balconies, and tea kitchens.

From there, two generous corridors lead to the office spaces, which are either three or four axes deep and thus provide high occupancy variability.

At the end of the corridor areas, the space widens into so-called flex zones, which offer the possibility to provide department-specific requirements such as service areas for printers, filing, paper, or room pockets with archive function and mail distribution through situational equipped furniture, thanks to their modular basic system.



IN THE TREE STUMP a pleasant walk on flat wooden steps, beautiful handrail with a skylight and warm clay walls.



3. **FLEXIBLE INTO THE FUTURE.** A setback on the ground floor forms the addressing. The spacious lobby serves as both an entrance and agency; the floor provides ample space for consultation.

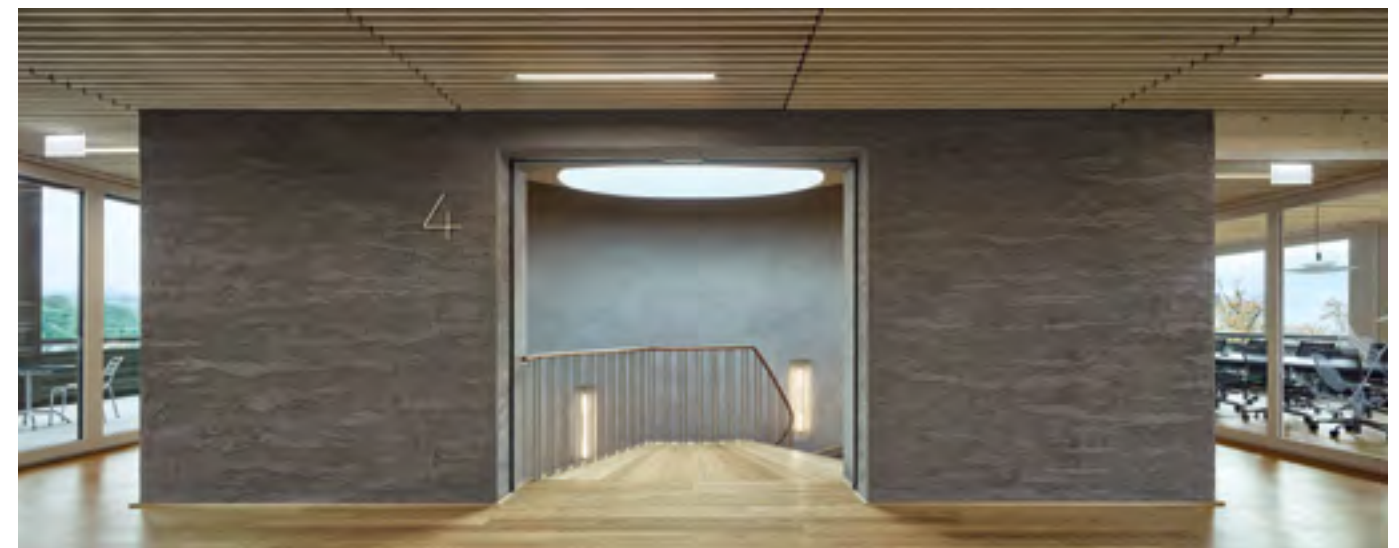
The access, organized in two cores, allows for rental of the northern half of the building on a floor-by-floor basis. If necessary, the offices can be easily expanded or gradually reduced.





In addition to the access, the two cores serve as the static and organizational center and include restroom facilities.

In the southern core, a curved oval staircase invites people to walk up instead of taking the elevator. The staircase opens up to a generously sized central meeting place on every floor.





COMMUNICATION On each floor there are different opportunities to exchange ideas in a fantastic vista.

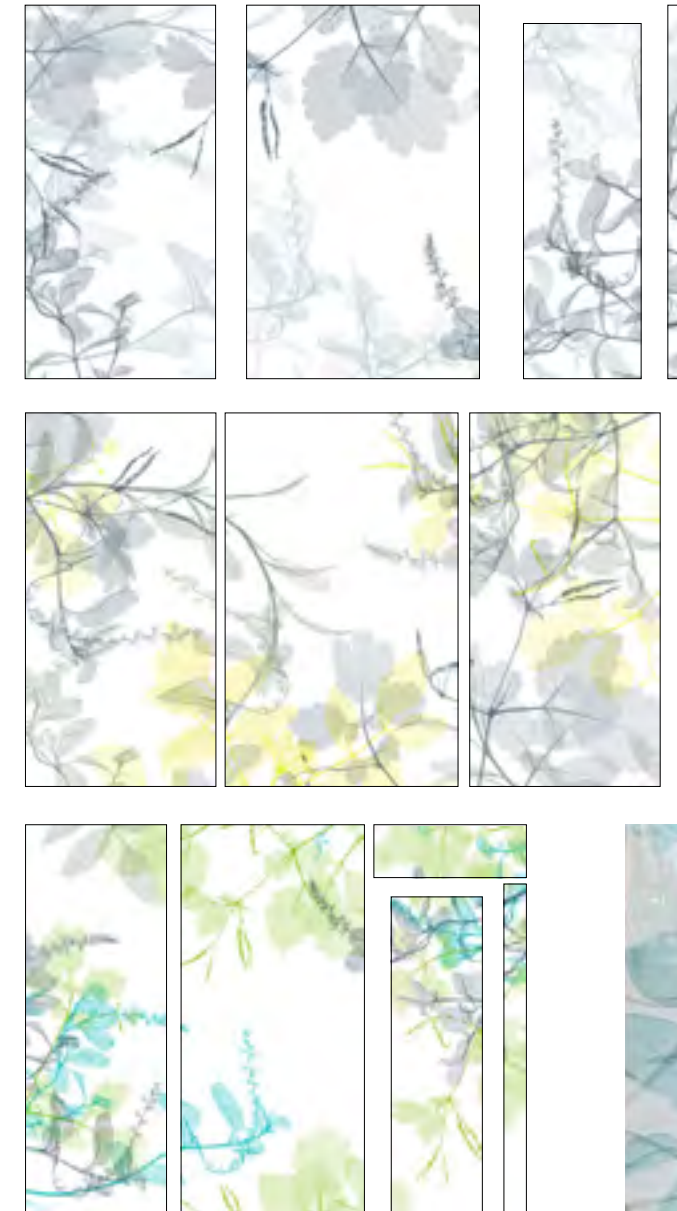
The offices are arranged along the facade. The cores shifted to the west and east allow for wider and narrower zones, from individual offices to separable meeting areas to group rooms. Each floor includes two open-use flex zones and over-height areas as vertical spatial connections within the upper floors.

Glass walls designed specifically for EGK separate the offices from the hallway. The daylight shines through the large windows and projects vivid forms mixed with the soft shadows of the tall trees onto the hallways. The images show an overlay of greatly magnified, translucent healing herbs.



At the end of the corridor areas, the space widens into flex zones, which provide department-specific

requirements such as service areas for printers, filing, paper, or room pockets with archive function etc.



To assist with orientation, the colors change on each level of the building. Bold, pure corporate colors are used on the ground floor while delicate flowers and leaves are used as a white silhouette on the attic floor, framing the beautiful panorama of the surrounding landscape.



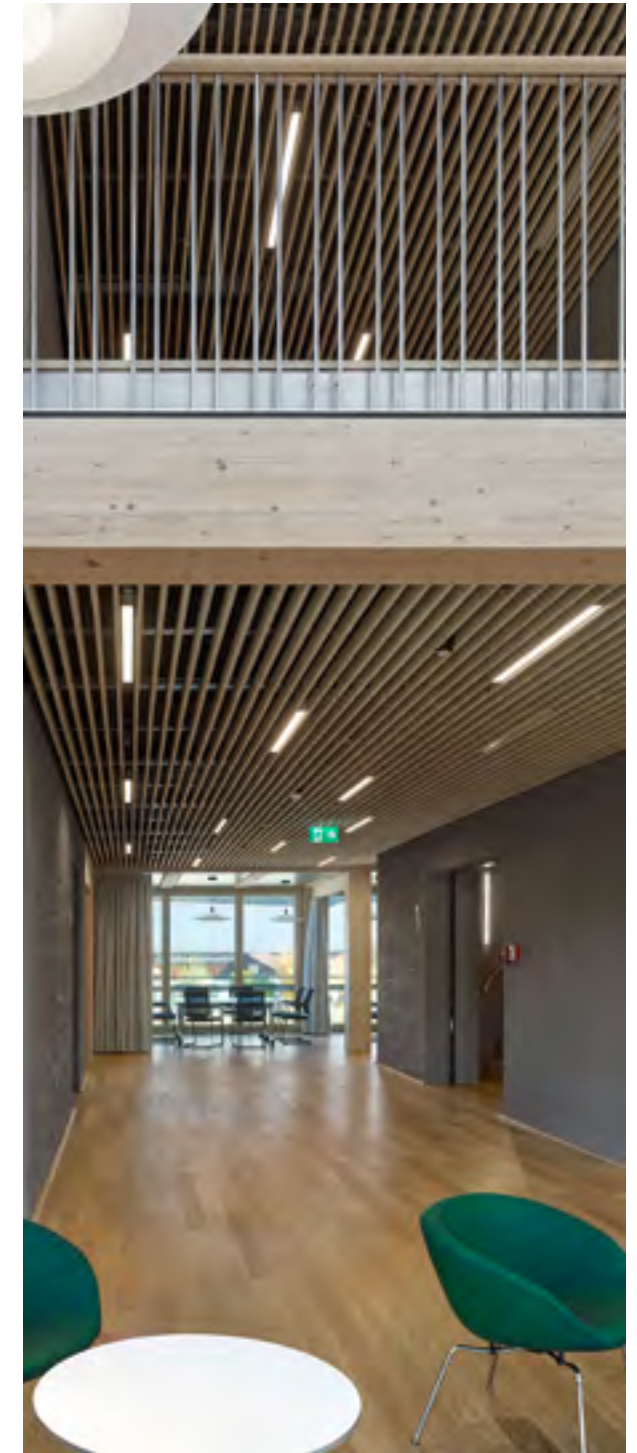
Illustrations in the glass offer a certain privacy protection. Curtains can offer even more privacy.

For future changes in use the clear and robust structure allows room occupancy and configuration.
The areas can be further divided or large open office spaces can be created.

MEDICINAL HERB GARDEN ON THE ROOF Working on the fourth floor – with a view of nature and surrounded by lush growing medicinal herbs. The lying proportions of the ribbon windows and the surrounding canopies invite you to look outside and to perceive the surrounding landscape in its entirety.



THE SOCIAL HEART OF THE BUILDING To encourage interaction, on three upper floors the central access widens to communication zone with air spaces, balconies, and tea kitchens.





ATTICA The meeting rooms, tea kitchen and cafeteria of the EGK are located in the southern part of the attic floor. There are walk-in terraces all around, which can be used for different purposes.



MEAL WITH A VIEW. The fourth floor has a wonderful panorama that employees can enjoy when they come together to eat in the canteen.

The regular floors are organized so that the north side can be sublet to third parties on a half-floor basis.

These areas are accessed independently through the northern staircase and have their own elevator.





THE LOCAL QUALITIES ARE THE CENTER OF THE OUTDOOR AREA. This is particularly evident in the choice of plants, with a high percentage of local species being planted. This not only contributes to the promotion of biodiversity, but also creates an attractive, flowering, and vibrant outdoor space. The new EGK building is surrounded by a lush green, natural, and biodiverse open space. To achieve this, paved areas were only created where necessary. The paved areas are designed with large-format Jura limestone concrete slabs, which serve as a versatile design element and link the paved areas with the planted zones.

A publicly accessible square with a fountain and seating provides an attractive gathering place on the premises. Retreat areas for employees in the form of seating niches are available in the northern and eastern areas of the new building.

Local materials such as Jura limestone and planting with appropriate and predominantly native species create a strong connection to the site.

«Local qualities are at the heart of the outdoor area. The building stands in the midst of a natural and biodiverse environment. We have therefore selected materials such as Jura limestone and only laid the surface areas where they are necessary. When choosing the plants, we also deliberately opted for a high proportion of local species. In this way, the surroundings of the EGK headquarters contribute to more nature in the settlement area. In addition, wild bees, birds and small animals are given a variety of habitats in the native trees and shrubs as well as in the near-natural flower meadows.»

Pascal Gysin landscape architect/pg landschaften



The planting is inspired by the natural plant communities of the region and includes over 30 different medicinal plants. The surroundings of the EGK new building thus promote local flora and fauna.



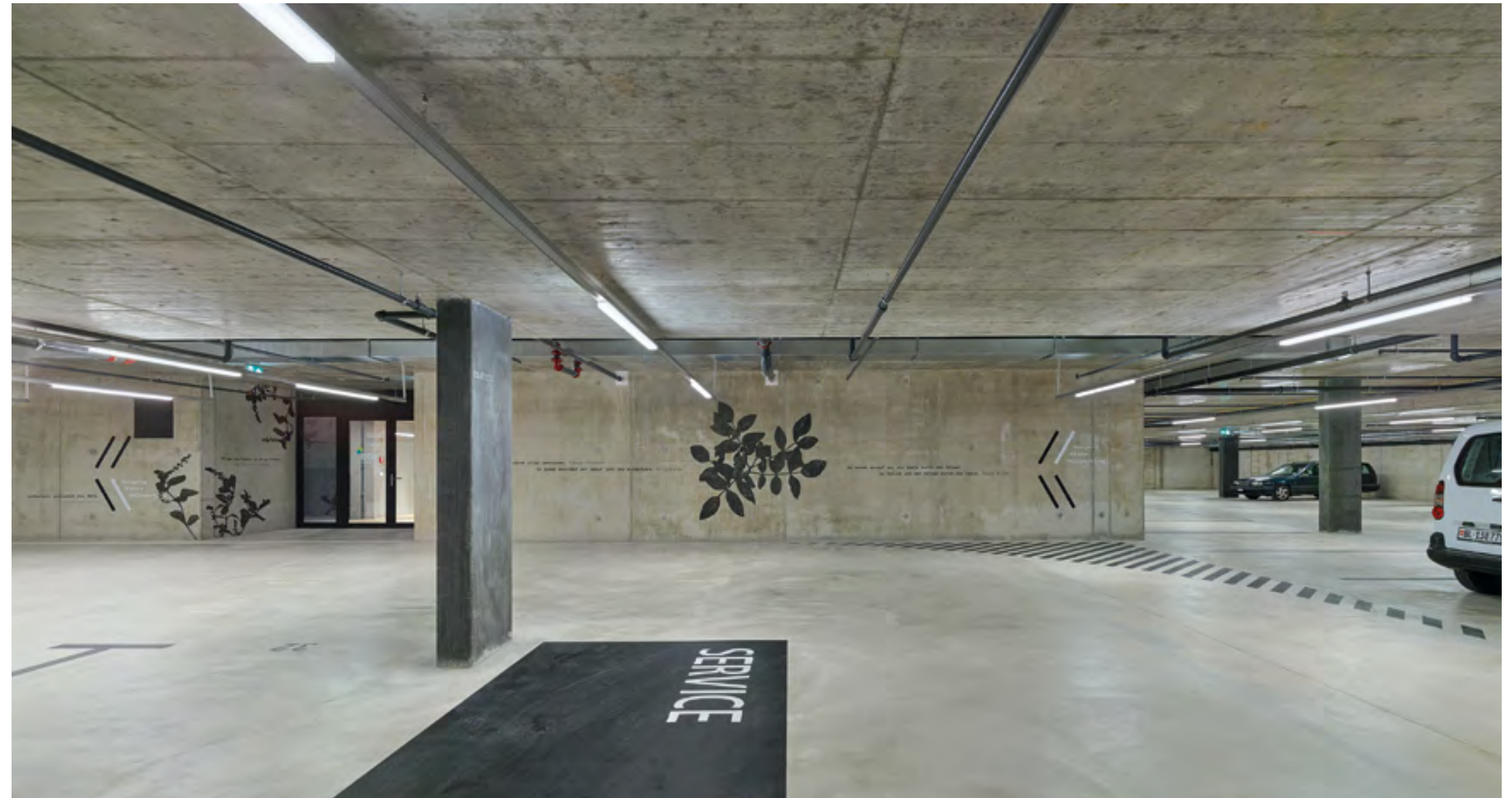
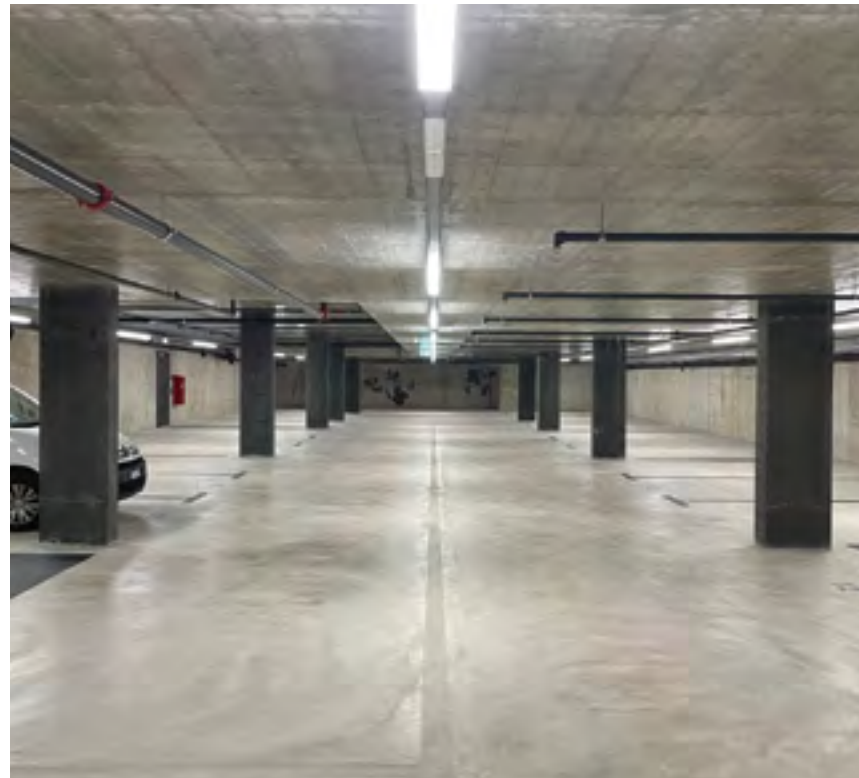
THE BASEMENT is accessed via a ramp and an external staircase in the annex building to the east of the main building. In the northern part of this annex there is also a large storage room for garden tools and waste disposal.



THE BOULDER FROM THE UNDERWORLD. The underground landscape speaks a surprisingly different language. The roots of the one-story underground garage extend far beyond the above-ground building edges.

The entrance stands out intentionally as a boulder away from the building. The intensive planting of the modeled roof landscape will make it its own.

The concrete building forms the opposite pole to the wooden main building. The differences enhance the effect of the opposite and, despite all playfulness, underline the seriousness of the overall complex.



The car park has 59 parking spaces, two of which are handicap accessible, six have a charging station for electric vehicles. The parking area for bicycles and mopeds is in a demarcated area.

SILHOUETTES OF HEALING HERBS AND HEALING QUOTES.
Part of the guidance system in the basement are varnish silhouettes of the herbs printed on glass in the upper floors in combination with quotes from the triangle of people, medicine and EGK health insurance.

1. WHAT ARE THE MAIN MATERIALS USED IN THE APPEARANCE AND FINISH OF THE STRUCTURE?
IN ADDITION TO LISTING THE MATERIALS, SHOW RENDERINGS, CGI OR PHOTOGRAPHY TO DEMONSTRATE THE
FINAL APPEARANCE OF THE DESIGN. GUIDELINE:COMPUTER-AIDED DESIGN IS PERMITTED.

Appearance and finish

D

«The new main building reflects the values of EGK. The successful combination of natural materials and state-of-the-art technology stands for the promising combination of complementary and conventional medicine.»

Dr. Reto Flury Managing Director / EGK-Gesundheitskasse



APPEARANCE AND FINISH The construction is based on the rich tradition of local carpentry, with a high level of detail evident throughout the building, from the joints of the wood slats to the design of the railings to the division of the balcony plates. The various components interlock with the precision of a carpenter's work.

At the same time, the closed parapets protect against prying eyes and ensure a balanced and energy-optimized window section in the facade.



Appearance and finish

1. WOOD - GLASS - CLAY - CONCRETE

LOCAL WOOD is used for the entire supporting structure, from the pillars to the ceilings, with solid wood slats for the suspended ceilings and hardwood parquet flooring throughout the building, creating a warm base tone.

The craftsmanship of the facade is highlighted in the fine construction of the pergola, from the standing seam profiles of the canopies to the arches of the roof. As an open roof, it is intended to serve as a future trellis. The construction is based on the rich tradition of local carpentry, with a high level of detail evident throughout the building, from the joints of the wood slats to the design of the railings to the division of the balcony plates. The various components interlock with the precision of a carpenter's work.

The wooden and **GLASS** materials reflect the natural and sustainable values of EGK and playfully locate the building within its rural cultural context, without denying that it is a «modern» office building. The canopies and window projections are covered with sheet metal and protect the underlying wooden components permanently. The horizontal proportions of the window bands and the

surrounding canopies invite you to let your gaze wander outside and perceive the surrounding landscape in its entirety. At the same time, the closed balustrades protect against unwanted views and ensure a balanced and energy-optimized window area in the facade.

As a third important material, **CLAY** is used from a local clay pit. Firstly, in the form of thick clay plaster as a covering for the central concrete cores, and secondly, all office partitions are formed with clay construction boards and clay finishing plaster.

Clay plays a central role in the indoor climate of the building, with its various natural properties such as thermal storage capacity, humidity regulation, good sound insulation, and pollutant binding. It contributes to ensuring the desired natural comfort and regulating the indoor climate, without requiring the additional house technology to be pushed to its limit.

CONCRETE AND CARBOMETUM sensitive people can enjoy the special underfloor system. The mixture of the cement screed is supplemented with a harmonizing additive. It compensates for the bioenergetic stresses caused by the cement.

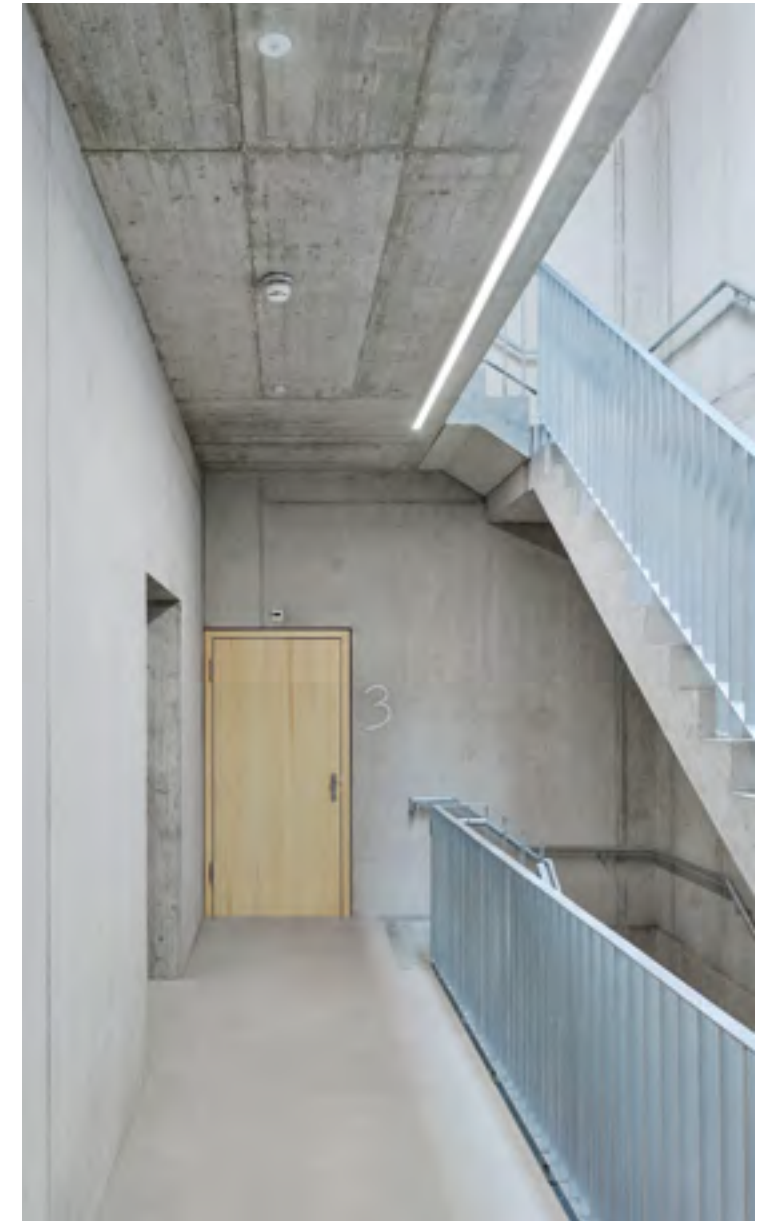


WOOD, CLAY AND GLASS The materialization reflects the natural and sustainable values of the EGK and playfully locates the building in its rural cultural context, without denying that it is a "modern" office building.



Parking

CONCRETE The concrete building forms the opposite pole to the wooden main building. The difference reinforces the effect of the opposite and underlines the seriousness of the overall system despite all the playfulness.



Emergency staircase

CARBOMETUM® is an additive that vivifies concrete in an effective and healthy way. The additive is added to the cement screed or calcium sulphate screed. A floor upgraded in this way is pleasant to walk on and prevents cold feet and tired legs.

1. LIST ALL MATERIALS, DESIGN AND CONSTRUCTION ELEMENTS THAT REDUCE THE BUILDING'S ENERGY CONSUMPTION.
- 2.a LIST ANY ENVIRONMENTALLY FRIENDLY AND SUSTAINABLE CONSTRUCTION MATERIALS AND TECHNIQUES USED.
- 2.b WHAT METHODS OR MATERIALS ARE INCORPORATED INTO THE DESIGN TO USE RENEWABLE ENERGY?

Even if the five-storey office building could not be built entirely from ecological building materials due to the applicable building regulations, such as fire and noise protection, it is a small miracle of sustainability in terms of its ecological balance.

Compared to a conventional solid construction, we were able to halve both the CO² emissions and the gray energy required for the manufacture, transport and storage of the building materials.

EGK-Gesundheitskasse

Sustainability, Energy Conservation and Innovation

E



E



Sustainability, Energy Conservation and Innovation

MATERIALS, DESIGN AND CONSTRUCTION ELEMENTS THAT REDUCE THE BUILDING'S ENERGY CONSUMPTION.

1.

- Thermal groundwater utilization for heating and cooling energy
- Heat pump for energy exchange
- Heating and cooling ceilings between the beams
- Photovoltaic system for electric power (136 modules, approximately 60,000 kilowatt hours annually. The installed capacity was 71.78 kWp (kilowatt peak))
- Existing trees were preserved and have taken on a filter function for visibility and noise
- Greening with 30 regional medicinal plants on more than 2000 square meters to promote local flora and fauna. (Certification from the Nature & Business Foundation for nature-based environmental planning)

The volumetry of the building is very compact in relation to the facade and the floor area.

The existing trees were preserved and have taken on a filter function for visibility and noise on the Naustraße.

The basic structure of the building is very flexible and agile to switch in order to be ready for future spatial needs.

The heating is generated with a groundwater heat pump. In the summer, cooling can also be carried out using the naturally occurring temperature of the groundwater without bringing in cooling energy.

The heating and cooling energy is distributed in the rooms via ceiling panels which are stretched between the beams. The flow and return for heating and cooling is the same, which means that a second distribution can be saved.



The building binds around 1082 tons of CO² and consists only of concrete in its core. In order to address the issue of health, we clad the entire core in clay. The partitions in the offices are also made of clay. Since it can absorb moisture and odors and absorb pollutants, it ensures a healthy indoor climate and thus greater well-being.

FULL POWER AGAINST SICK BUILDING SYNDROME
According to Andreas Martens, occupational hygienist and co-founder of AEH – Corporate Health Experts, up to 10 % of people suffer from what is known as sick building syndrome. In addition to irritation of the eyes, nose or respiratory tract, those affected also complain of headaches or difficulty concentrating. «Such complaints cannot be explained in a monocausal manner. Rather, a variety of factors are responsible for why people do not feel comfortable in offices. Reasons for this can be volatile dyes, too little natural light or poor acoustics.»

2.a

**SUSTAINABLE CONSTRUCTION MATERIALS
AND TECHNIQUES USED**

- **Local wood**
With the exception of the core zones (with stairs, elevator and toilet facilities), the construction of the building statics was made entirely of wood.
- **Clay walls made of local clay plaster or clay building panels**
All interior partitions were made with clay products, a local building material with a very low proportion of gray energy. In addition, clay regulates the room air humidity in an area of well-being indoors.
- **Sheep wool**
All soundproofing between the corridor zones and the offices is made of sheep wool. It has the capacity of being able to bind any pollutants such as formaldehyde.
- **Carbometum®**
Harmonizing subfloors compensate for bioenergetic stress. The underlays are created with a harmonizing bedding powder. This significantly reduces the negative influences of concrete structures on the human energy balance and almost reaches the level of untouched natural soil.
- **No copper**
- **No composites** such as construction foam, to enhance circular economy in case of demolition.

2.b

**THE PEOPLE IN THE HOUSE SHOULD
FEEL COMFORTABLE IN EVERY SEASON.**

This goal is achieved by utilizing existing resources. A newly realized thermal groundwater utilization system provides the building with sustainable and cost-efficient heating and cooling energy.

The energy exchange is done through a heat pump, so that the extracted groundwater flows back completely. The transfer takes place via heating and cooling ceilings between the beams.

A photovoltaic system converts sunlight into electrical energy. The agile system, designed for summer peaks, can provide the building with energy self-sufficiently when needed.

In addition to the building technology, the walls and floors also contribute to improving

the room climate. The surface of the solid concrete core has a clay thick plaster on the gang side. The rough texture gives the corridors a natural feel. Due to its high sorption capacity, clay can store a lot of moisture and neutralize odors when needed. Clay building boards are used to fill the office partitions, and conventional gypsum boards are only used where the fire protection norm requires it.

Sensitive people can enjoy the special underfloor system. The mixture of the cement screed is supplemented with a harmonizing additive. It compensates for the bioenergetic stresses caused by the cement.

In addition to technical and building biology efforts, it speaks for EGK to focus on unconventional methods for individual well-being.

The consistent use of wood and clay not only offers design advantages, but also minimizes grey energy and reduces the CO2 balance during building construction.

Technical facilities are open and easily accessible, with a assembly sequence that corresponds to expected system life cycles. Later expansion and replacement are possible at any time. Pre-fabricated components of the wooden structure have already been delivered to the construction site with necessary openings and drillings for building technology.

When it comes to joining techniques, consideration is given to closed-loop systems and the ability to separate individual components by type in a possible dismantling process.

We work with renewable and durable raw materials such as wood and also rely on circular economy. The building materials are planned in such a way that they can be easily dismantled into their individual parts and used in new projects in the event of demolition.

Peter Becker Planning Officer/
Flubacher_Nyfeler_Partner Architekten

1.

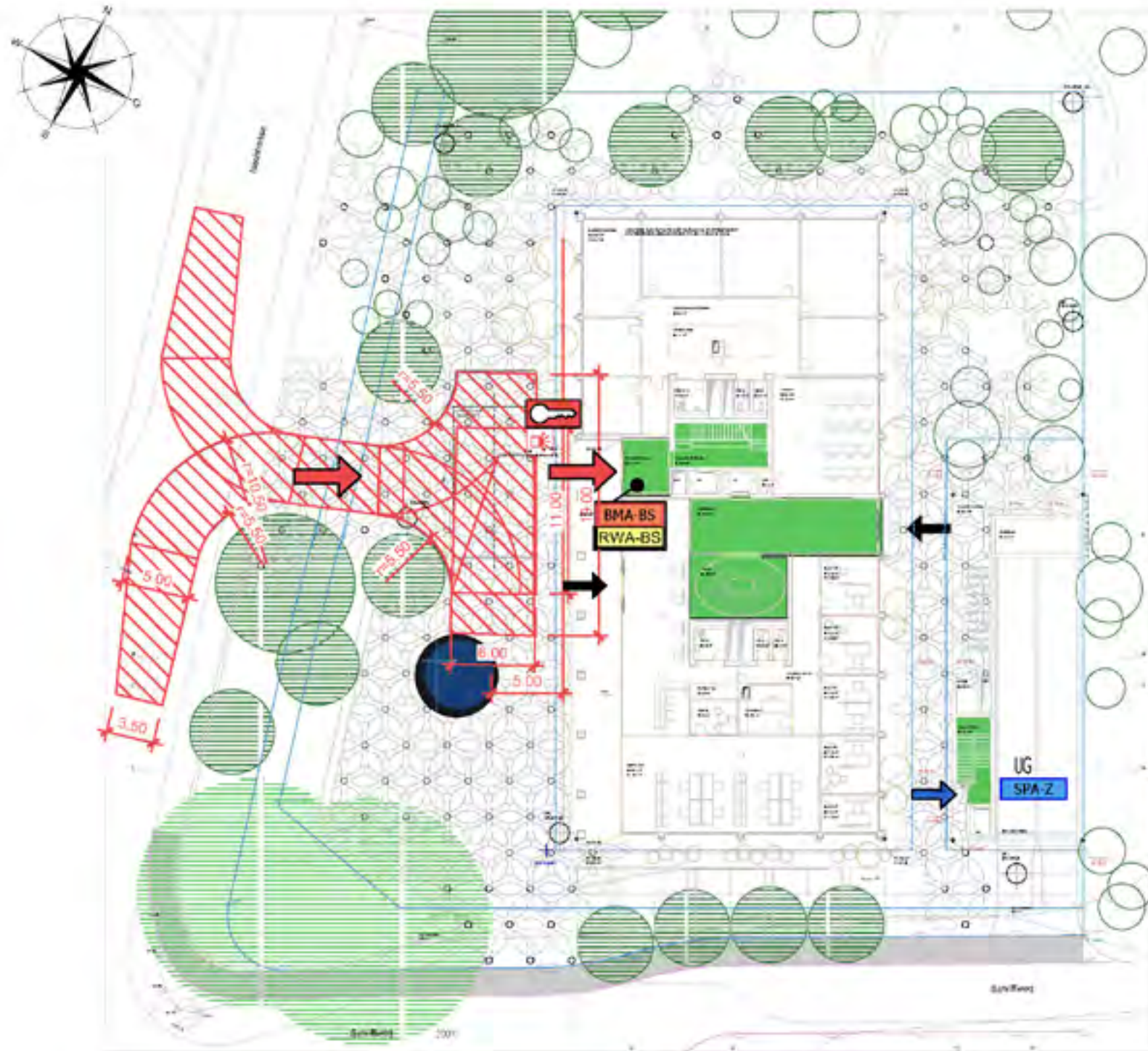
LIST ALL THE FEATURES INCLUDED IN THE PROPERTY THAT IMPROVE THE SAFETY AND SECURITY OF OCCUPANTS AND HIGHLIGHT ANY OF THESE MEASURES THAT GO BEYOND THE MINIMUM REQUIRED BY BUILDING CODE / LAW.
2.

DESCRIBE ANY FIRE PREVENTION OR SUPPRESSION SYSTEMS.

Safety and security

F





Safety and security

Security is guaranteed by a burglar alarm system, access control and a partial fire alarm system in the central escape routes.

The fire protection facilities are stipulated by law, all other systems go beyond the minimum required by the building code / building law.

Fire protection is multi-level. On the one hand, the static construction is protected from failure by withstanding at least 30 minutes in the event of a fire.







This is achieved by the dimension of the wooden columns and beams, which are almost oversized for the thickness of the layer that burns away in 30 minutes.

Since wood has a good insulating value, the layer exposed to fire protects the internal , load-bearing cross-section of wooden columns and beams.

On the other hand, the technical fire prevention and alarm systems are there to keep the event as short as possible, both temporally through the alarm and spatially through the cooling effect of the sprinklers on the fire site.

Legende / legend








Fluchtweg / escape route

-  Allgemeine Fluchtrichtung (Signalisation gemäss BSR 17)
-  vertikaler Fluchtweg
-  horizontaler Fluchtweg
-  horizontaler Fluchtweg mit Sprinklerschutz
-  Notausgangsschluss gemäss SN EN 179 oder nicht abschliessbar
-  Notöffnungstaster gemäss EN13637




Feuerwiderstände / fire resistances

-  Feuerwiderstand EI 60-RF1
 Feuerwiderstand EI 30
 Verglasung EI 60

Abschlüsse / close

-  Türe / Tor / Abschluss EI 60
-  Türe / Tor / Abschluss EI 30
-  Türe / Tor / Abschluss E 30
-  Aufzugstüre RF1
-  Schiebetüre / Schiebetor EI 30
-  selbstschließend (TS)
-  Aufzugstüre mit Feuerwiderstand E 30

Sprinkleranlage / sprinkler system

-  Sprinklerzentrale
 Sprinklerschutz, gesprinkelte Bodenfläche (SPA)
 Handfeuerlöscher




Brandmeldeanlage / fire alarm system

- ☐ Brandmeldeüberwachung (BMA)
- ☒ BMA-Z Brandmeldezentrale
 - z.B. Schliessen von Element brandfallgesteuert
- ☒ Handfeuermelder
- ☐ Einzelrauchmelder








Entrauchung (RWA) / smoke extraction

- 130 **NRWA** natürliche Rauch- und Wärmeabzugsanlage (NRWA) in m²

Feuerwehr / fire department

-  Hauptzugang Feuerwehr
-  Schlüsseldepot (aussen) / Schlüsseltresor (innen)
-  Blitzleuchte Feuerwehr

Diverses / miscellaneous

-  Raum / Bereich mit Sicherheitsbeleuchtung
-  Personenbelegung xxx Personen
-  Luftraum
-  Gasmeldeanlage (GMA)
-  Gefährliche Stoffe mit Gefahren- / Stoffnummer
siehe Sicherheitsdatenblatt vom Hersteller
-  Zone 2 (seltene Explosionsgefahr brennbare Gase, Dämpfe)
-  Photovoltaikanlage



1.

In addition, the escape routes are always open and freely accessible and are permanently illuminated and marked.

In order to shorten the distances, fire compartments with automatically triggering sliding doors, which close in the event of a fire, are installed in the escape routes.

Security and to keep the tenants in good health is conveyed not only by the fire protection, burglar alarm and access control systems, but also by the natural building materials such as wood, clay and carbometum.

Wood has a homely character and the grain has a calming effect on our nervous system. In addition to the moisture equalization mechanism, clay also binds odours. Clay can also have an anti-allergenic effect. Carbometum is a bedding powder added to the subfloor to neutralize the negative properties of cement products.

Concrete, for example, exerts a biophysically demonstrable disharmonizing effect. This can lead to corresponding stress, which can manifest itself in general malaise or in specific health problems with pronounced symptoms. Cement, the binder of concrete, was determined to be the cause of these health problems.

The combination of colours, shapes and haptically tactile surfaces round off the whole thing to create a good sense of space.

An example of this is a statement from an employee: "I would actually like to be able to live here, because it is so cozy and beautiful – an almost perfect room".

Employee entrance car park



2.

We pursue an integrated approach to structure, function, and fire protection. The north fire section runs through all regular floors, and at the same time, the third-party tenant area is another potential fire section.

The entire building is designed with full sprinkler protection. The sprinkler heads of the sprinkler system only trigger in the event of a fire. The safety pressure kegs trigger at 86 degrees Celsius and only where there is a fire.

This slows down or even prevents the spread of fire but this will not extinguish the fire. The fire brigade is automatically alerted if the sprinkler system is triggered.

Fire alarms are also installed in the escape routes, which alert the fire brigade in the event of smoke, gas or heat.

The fire protection facilities are stipulated by law, all other systems go beyond the minimum required by the building code / building law.

Cafeteria / Meeting zone / Attica



IMAGE FILM EGK-GESUNDHEITSKASSE
WITH/IN THE NEW HEADQUATER
YOUTUBE LINK

I don't know of any other wooden building in this country that is as impressive in terms of sustainability as it is in terms of beauty. This harmonious interaction was very important to us, because in the future up to 160 EGK employees from different locations will work together under one roof. You have to feel comfortable – both inside and outside. In addition to the natural materials that ensure a healthy sense of well-being, aesthetics also play a decisive role. For me, sustainable building is not in conflict with a sophisticated design.

Peter Ursprung Vice President / EGK-Gesundheitskasse

IMPRESSUM

A PLACE FOR EVERYONE.

PLANNING PARTNERS

CIVIL ENGINEER	Sperisen Ingenieure GmbH
TIMBER CONSTRUCTION ENGINEER	Makiol Wiederkehr AG
ELECTRICAL ENGINEER	Pro Engineering AG
SAFETY PLANNER	Pro Engineering AG
HVAC ENGINEER	eicher+pauli
SANITARY ENGINEER	Sanplan Ingenieure AG
BUILDING PHYSICIST	Makiol Wiederkehr AG
FIRE PROTECTION EXPERT	Makiol Wiederkehr AG
GEOLOGIST	Kiefer & Studer AG
SURVEYOR	Sutter Ingenieur-& Planungsbüro AG
LANDSCAPE ARCHITECT	pg landschaften GmbH
ART IN ARCHITECTURE/SIGNAGE	Isabel Becker-Umbeer
ARCHITECTURE/CONSTRUCTION MANAGEMENT	Flubacher Nyfeler Partner Architekten AG

FOTOGRAFY

Tom Bisig
Peter Becker
Isabel Becker-Umbeer

DESIGN

Isabel Becker-Umbeer

PRINT

april & tochter
RECYCLING PAPER MADE FROM 100% RECYCLED PAPER Nautilus

Flubacher_Nyfeler_Partner
Architekten

Birsigstrasse 122 4054 Basel fnp-architekten.ch