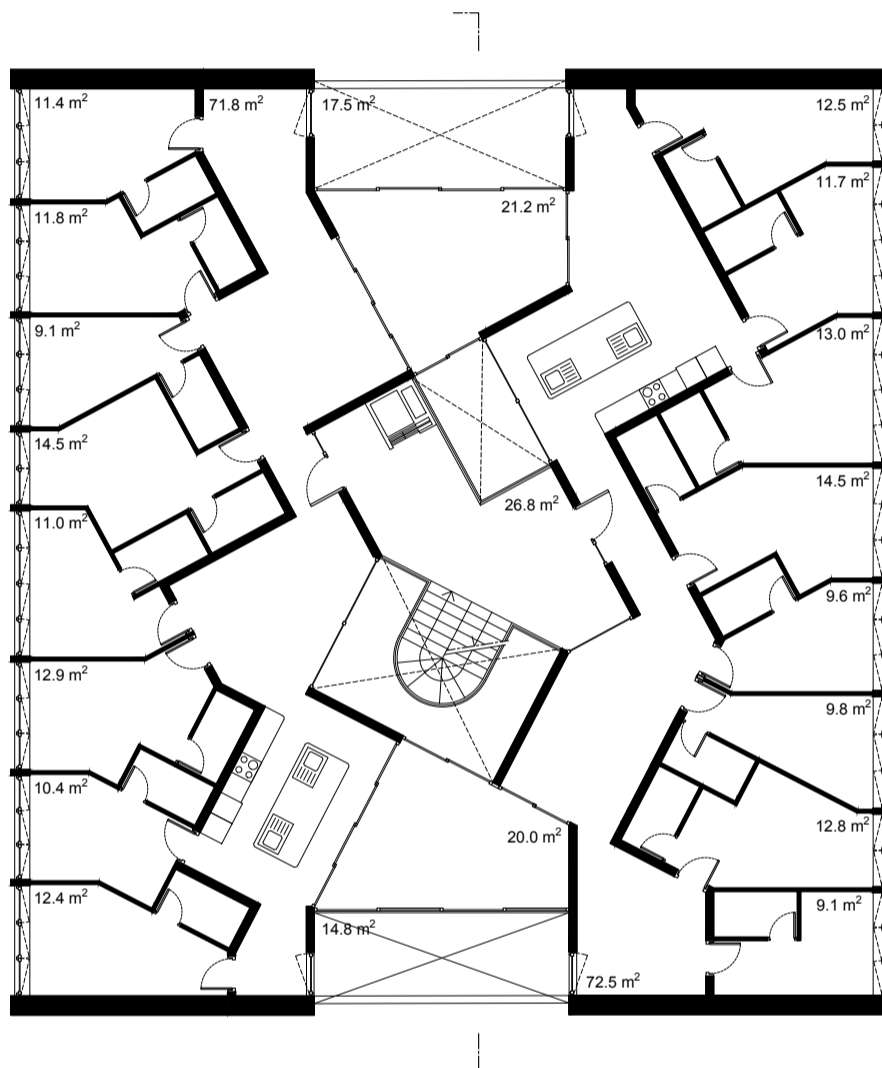


Typical floor plan

1:200



Data

Gross floor area (GFA): 513.5m<sup>2</sup>

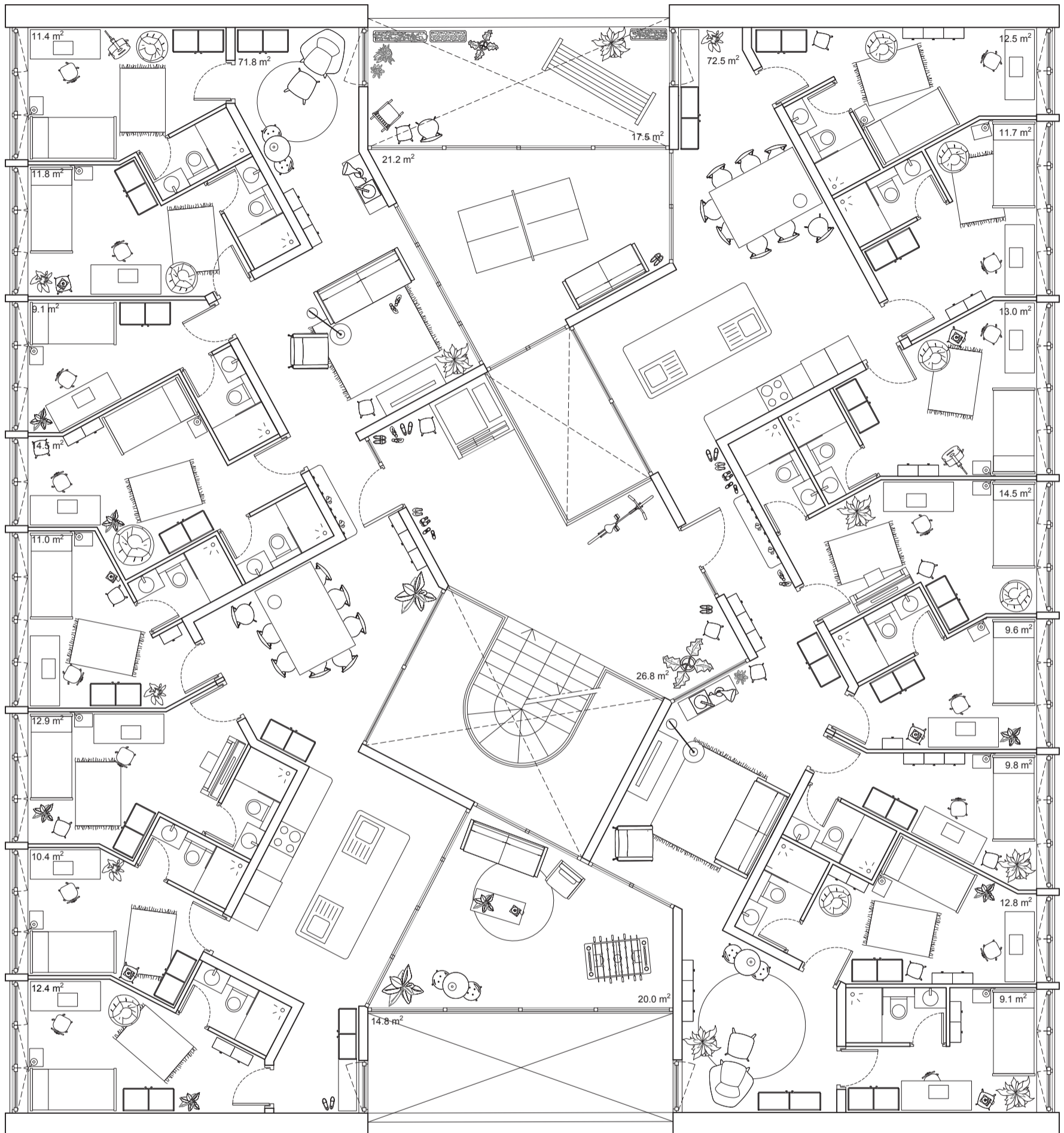
Net floor area (NFA): 414.1m<sup>2</sup>

NFA/GFA: 80%

App. Typ	NFA
9.5 (left)	206.4m <sup>2</sup>
9.5 (right)	207.7m <sup>2</sup>

New apartment type

1:100



Data

Apartment type: 9.5 x2

# Persons = # Rooms - 1 = 8P x2

Net floor area (NFA): 207.07m<sup>2</sup> (moy.)

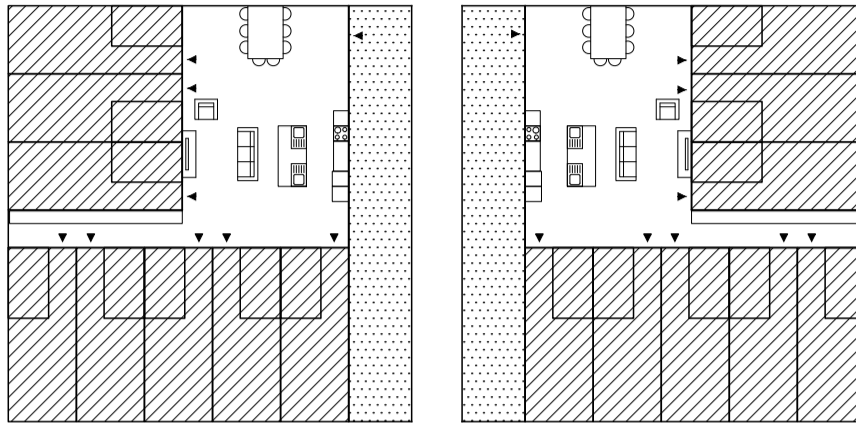
NFA per person: 25.9m<sup>2</sup>

Concept diagrams

Existing

264 m<sup>2</sup> x2

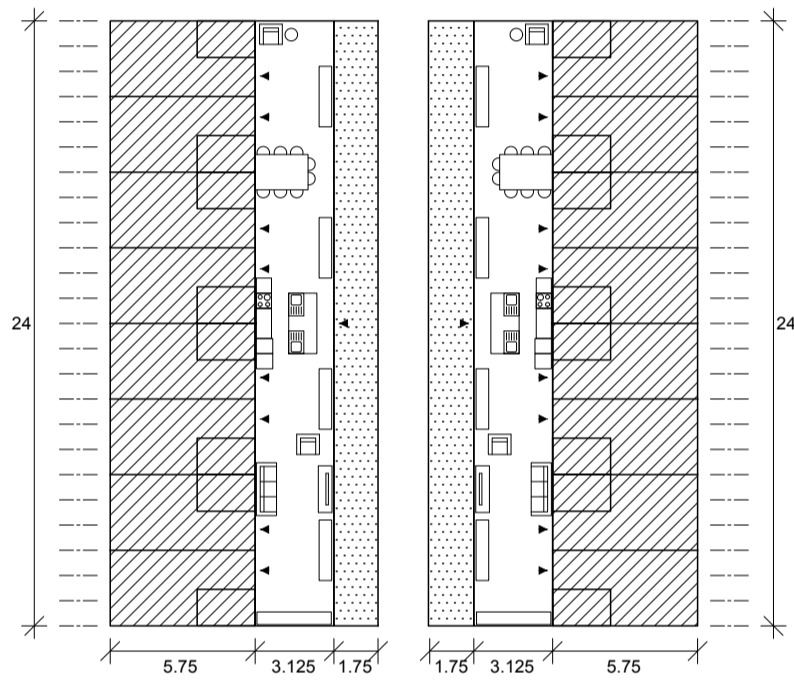
sleeping 18 m<sup>2</sup> / room    living 75 m<sup>2</sup>    sharing 42 m<sup>2</sup> x2    living 75 m<sup>2</sup>    sleeping 18 m<sup>2</sup> / room



Optimisation - Zoning

264 m<sup>2</sup> x2

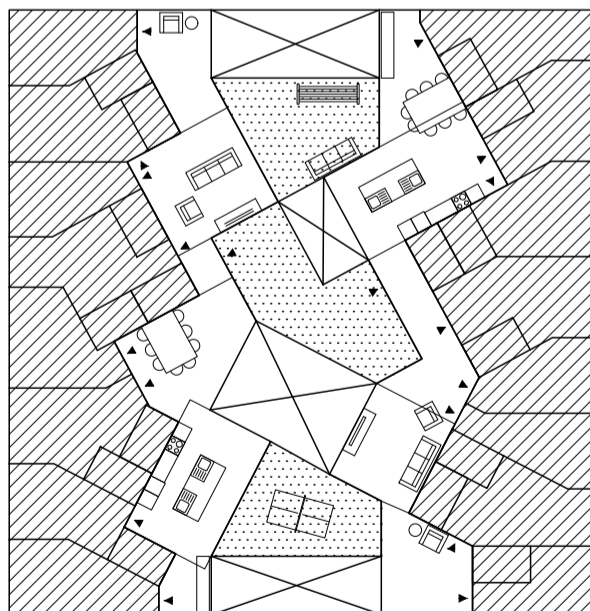
sleeping 18 m<sup>2</sup> / room    living 75 m<sup>2</sup>    sharing 42 m<sup>2</sup> x2    living 75 m<sup>2</sup>    sleeping 18 m<sup>2</sup> / room



Avoid Corridors

264 m<sup>2</sup> x2

sleeping 18 m<sup>2</sup> / room    living 75 m<sup>2</sup>    sharing 42 m<sup>2</sup> x2    living 75 m<sup>2</sup>    sleeping 18 m<sup>2</sup> / room



Data

Apartment type: 9.5 x2

Private area / pers: 18m<sup>2</sup>

Living area / apartment: 75m<sup>2</sup>

Sharing area: 84m<sup>2</sup>