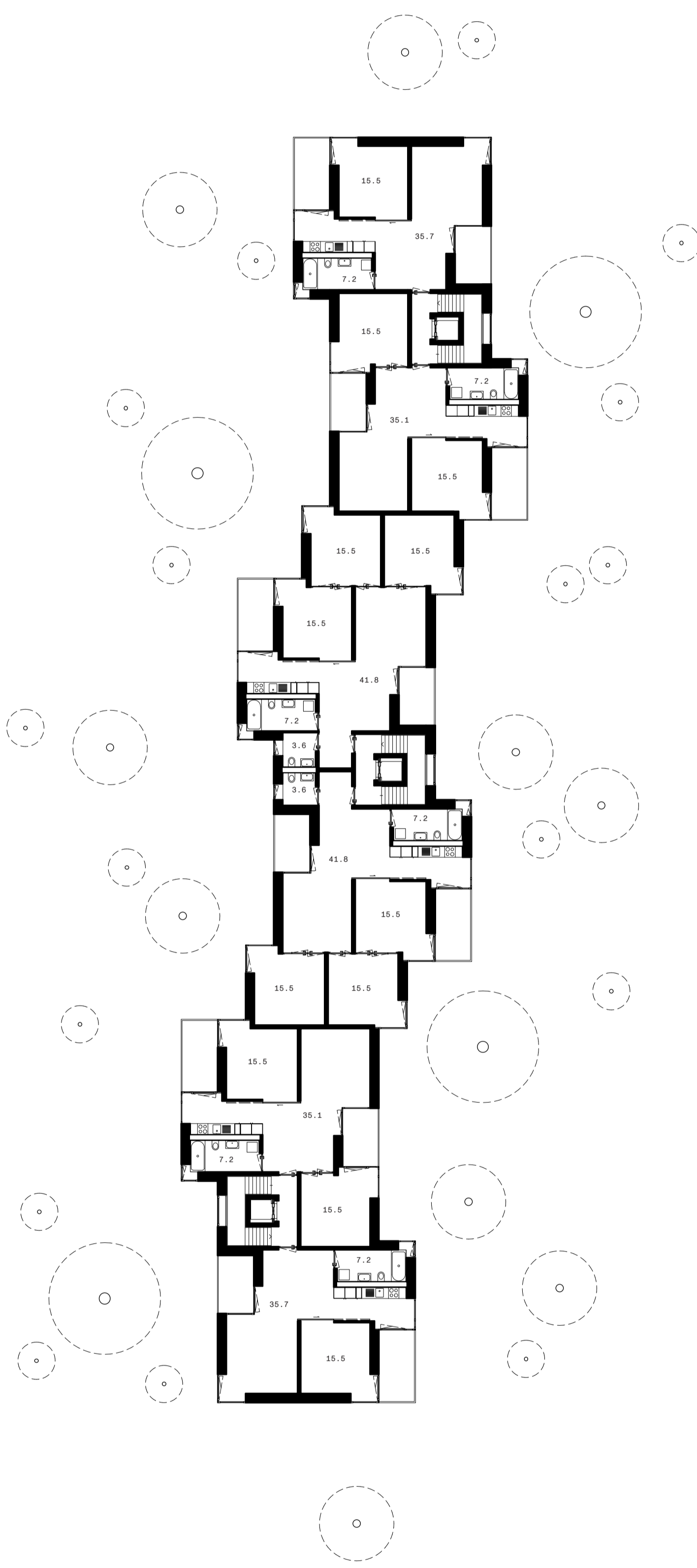


Typical floor plan

1:200



Data

Gross floor area (GFA): 616.2m²

Net floor area (NFA): 459.4m²

NFA/GFA: 74%

App. Typ	NFA
4.5	95.5m ²
3.5	73.3m ²
2.5	58.4m ²

New apartment type 3

1:100



Data

Apartment type: 4.5

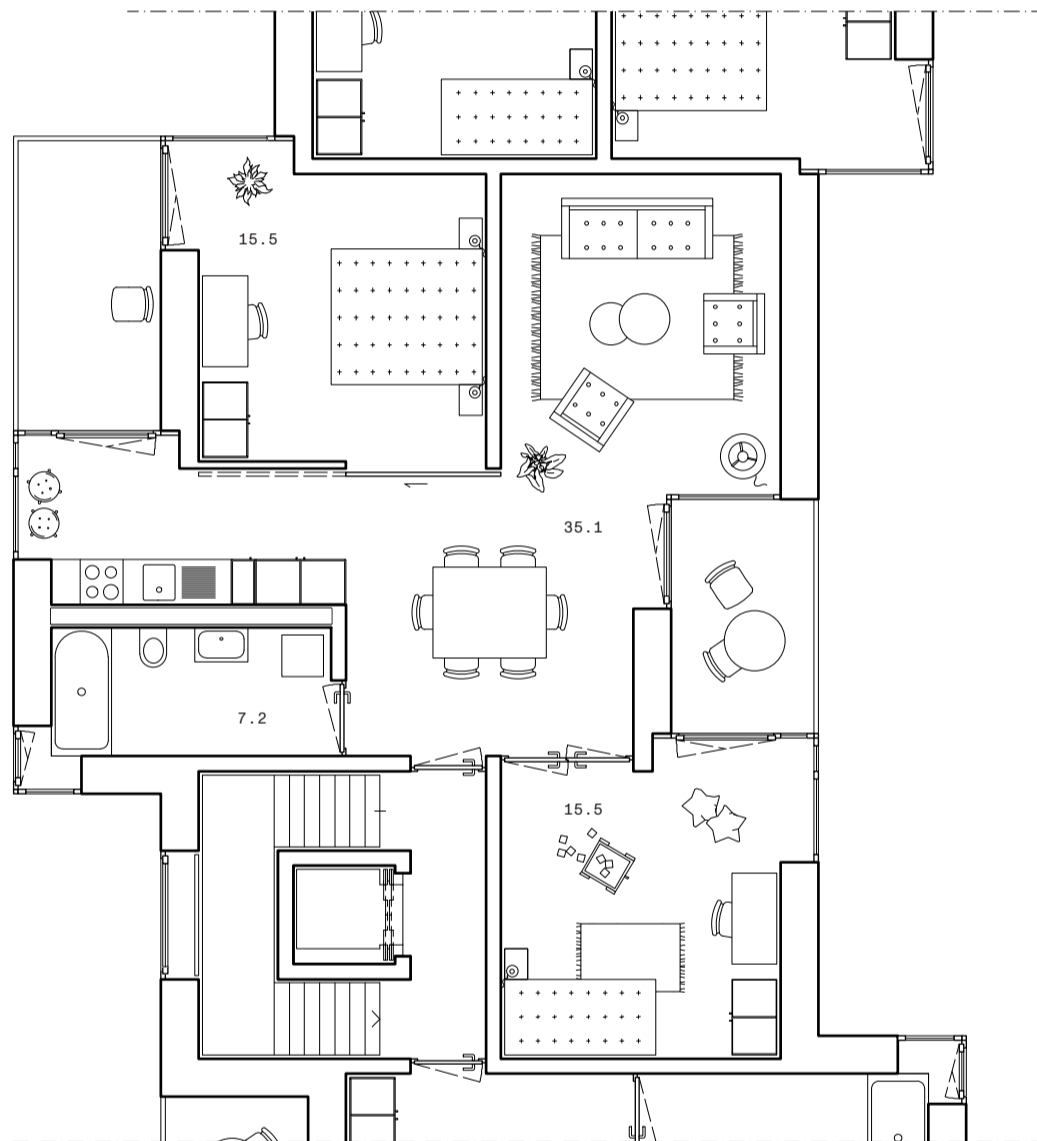
Persons = # Rooms - 1 = 3P

Net floor area (NFA): 95.5m²

NFA per person: 31.8m²

New apartment type 2

1:100



Data

Apartment type: 3.5

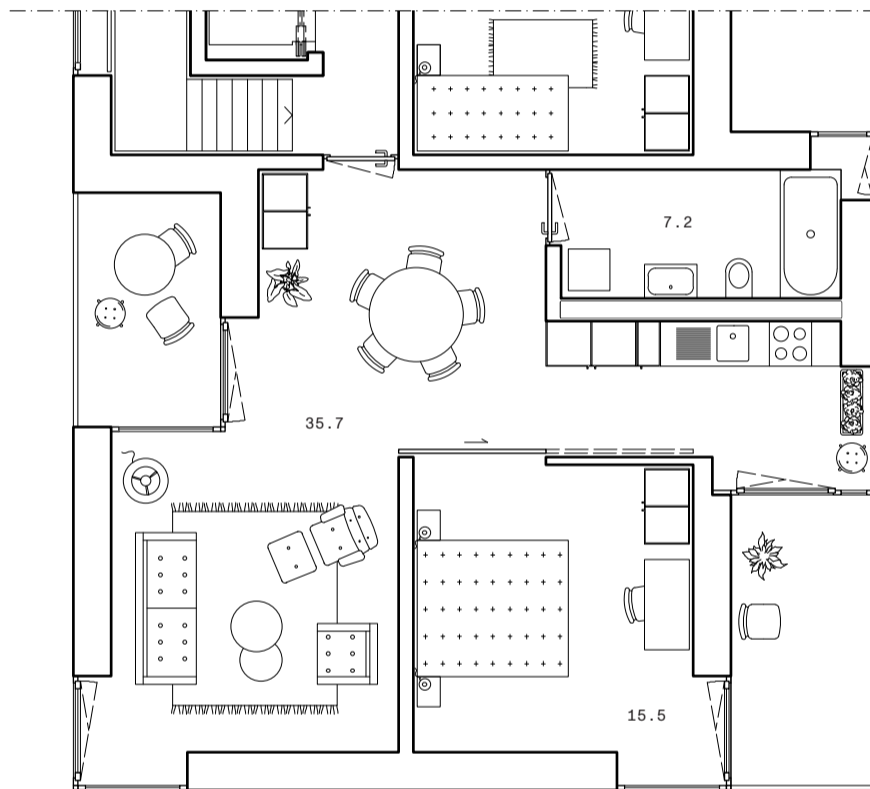
Persons = # Rooms - 1 = 2P

Net floor area (NFA): 73.3m²

NFA per person: 36.5m²

New apartment type 1

1:100



Data

Apartment type: 2.5

Persons = # Rooms - 1 = 1P

Net floor area (NFA): 58.4m²

NFA per person: 58.4m²

Concept diagram

