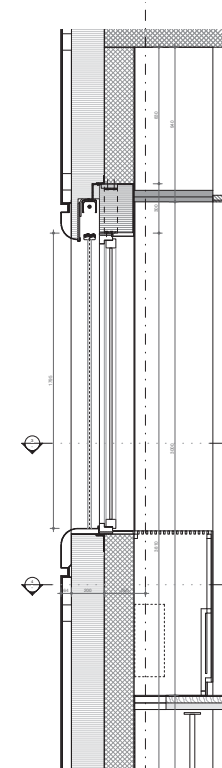
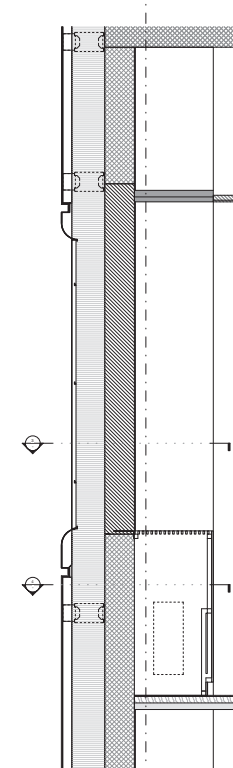


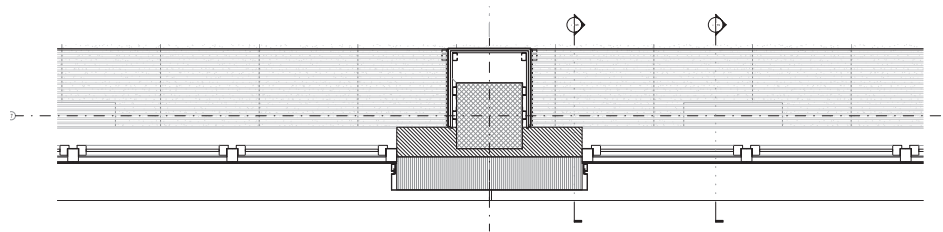
Ansicht der Hauptfassade



Typische Wandschnitte



- 01 Natural brushed finished anodized aluminium Alucobond A2 ventilated façade system cladding panels with closed joints and rivetted to T sections
- 02 Natural brushed finished anodized aluminium Alucobond A2 rounded for the window sill and head, to form horizontal bands on each level
- 03 Black polished powder coated anodized aluminium Alucobond A2 installed to horizontal bands - segments in between windows, and recessed from panels above and below
- 04 Hiiti MFT-FOX HT Medium brackets / profiles cladding support system with thermal break
- 05 30mm wide ventilation cavity
- 06 Isover Vario KM Duplex vapour membrane
- 07 Isover PB F extra 032 mineral wool insulation with plastic fixings
- 08a Anodised aluminium triple glazed window and frame finished in 'Traffic black' colour RAL 9017 - 30% gloss. Framing fixed to concrete structure above with thermal break connection
- 08b EPDM sealing membrane around window frames and to cover top of the insulation below the window sill
- 08c Schenker Storen VR70 / VR90 motorised aluminium Venetian blind with side guides embedded into the window jambs
- 08d Black anodized aluminium window sill and jambs, fixed to concrete or blockwork wall behind
- 09 Knauff plasterboard and render finish to cover the interior window opening sill and jambs
- 10 Removable white polished powder coated aluminium panel to window head
- 11 White polished powder coated fancoil unit ventilation system cover with air intake from the bottom and exhaust grille louvres on top, aligned to window sill
- 12 White - fine grain plaster finish to internal side of cladding walls



Planausschnitt durch Fenster