

Typical floor plan

1:200



Data

Gross floor area (GFA): 669m<sup>2</sup>

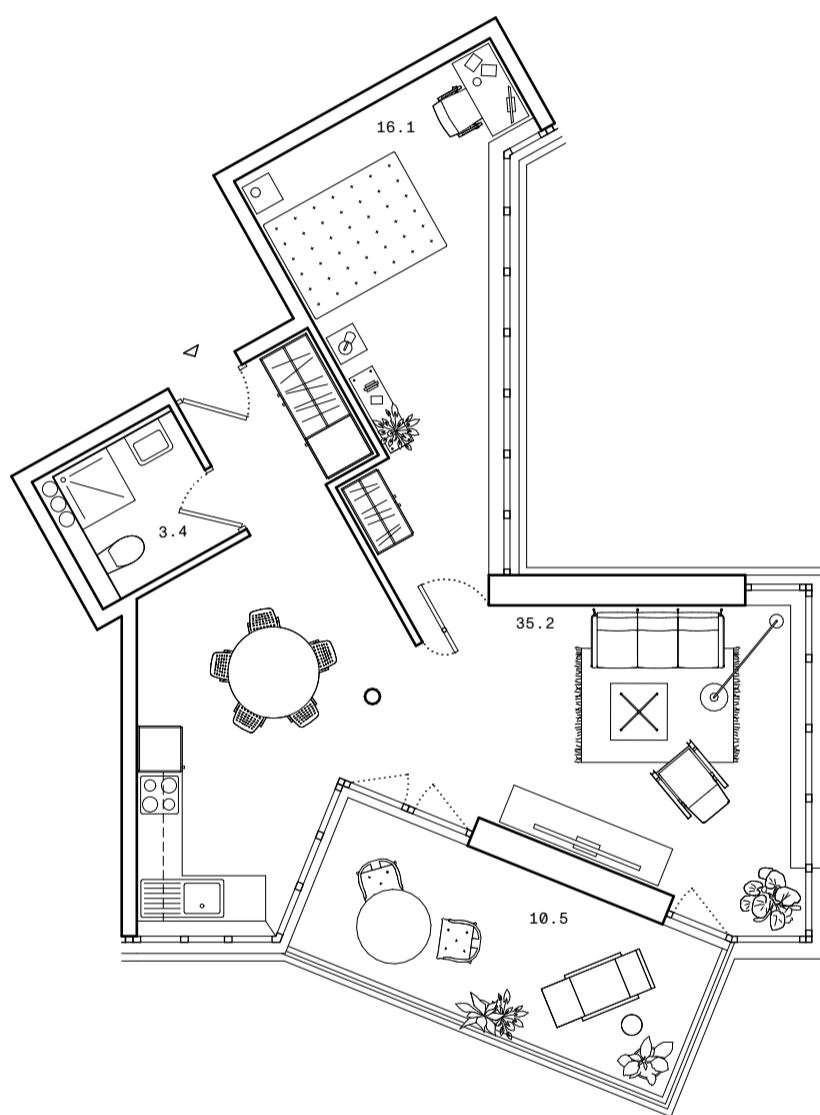
Net floor area (NFA): 432m<sup>2</sup>

NFA/GFA: 65%

App. Typ	NFA
2*4.5	175m <sup>2</sup>
2*3.5	135m <sup>2</sup>
2*2.5	109m <sup>2</sup>

New apartment type

1:100



Data

Apartment type: 2.5

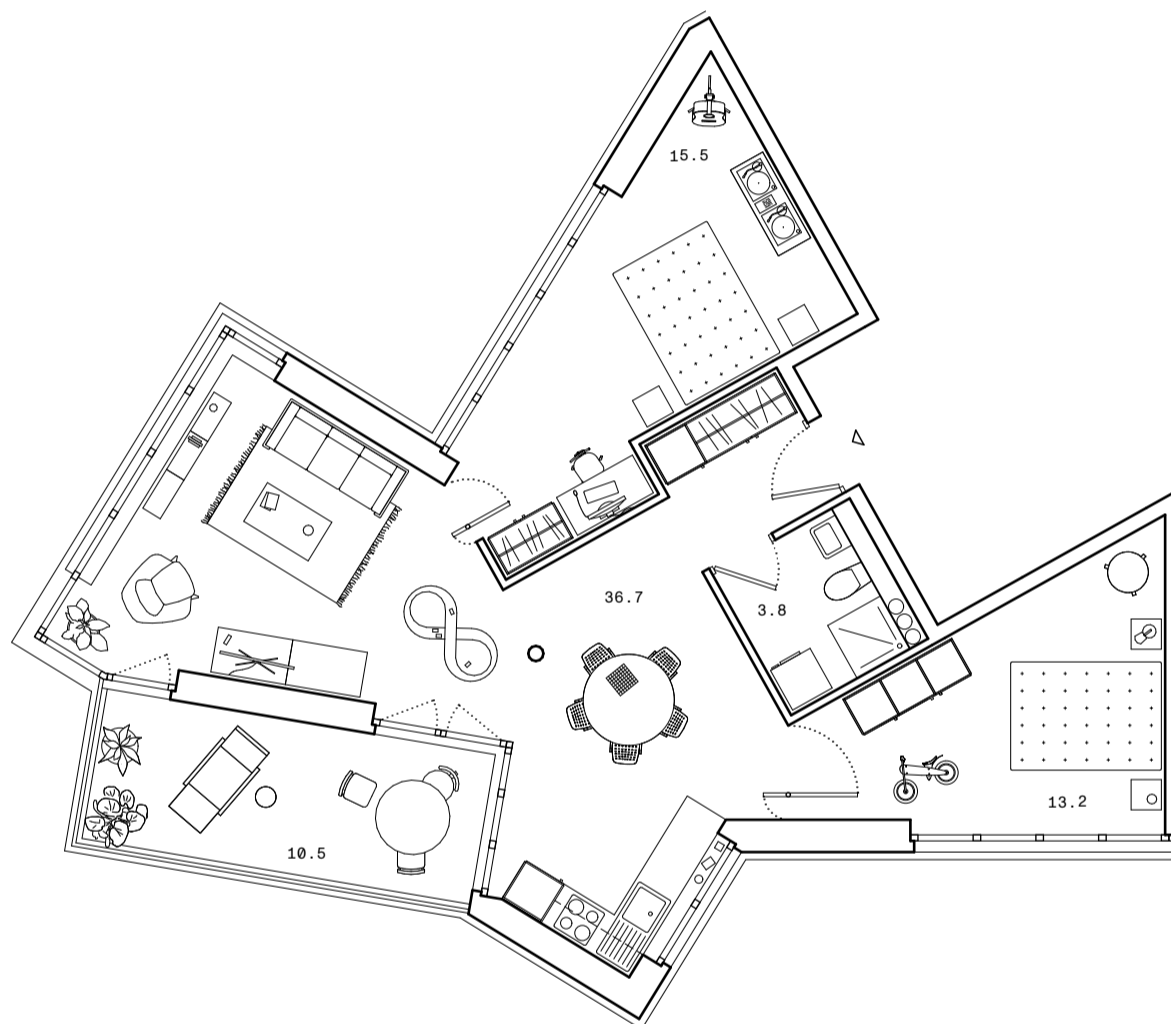
# Persons = # Rooms - 1 = 2P

Net floor area (NFA): 54.7m<sup>2</sup>

NFA per person: 27.4m<sup>2</sup>

New apartment type

1:100



Data

Apartment type: 3.5

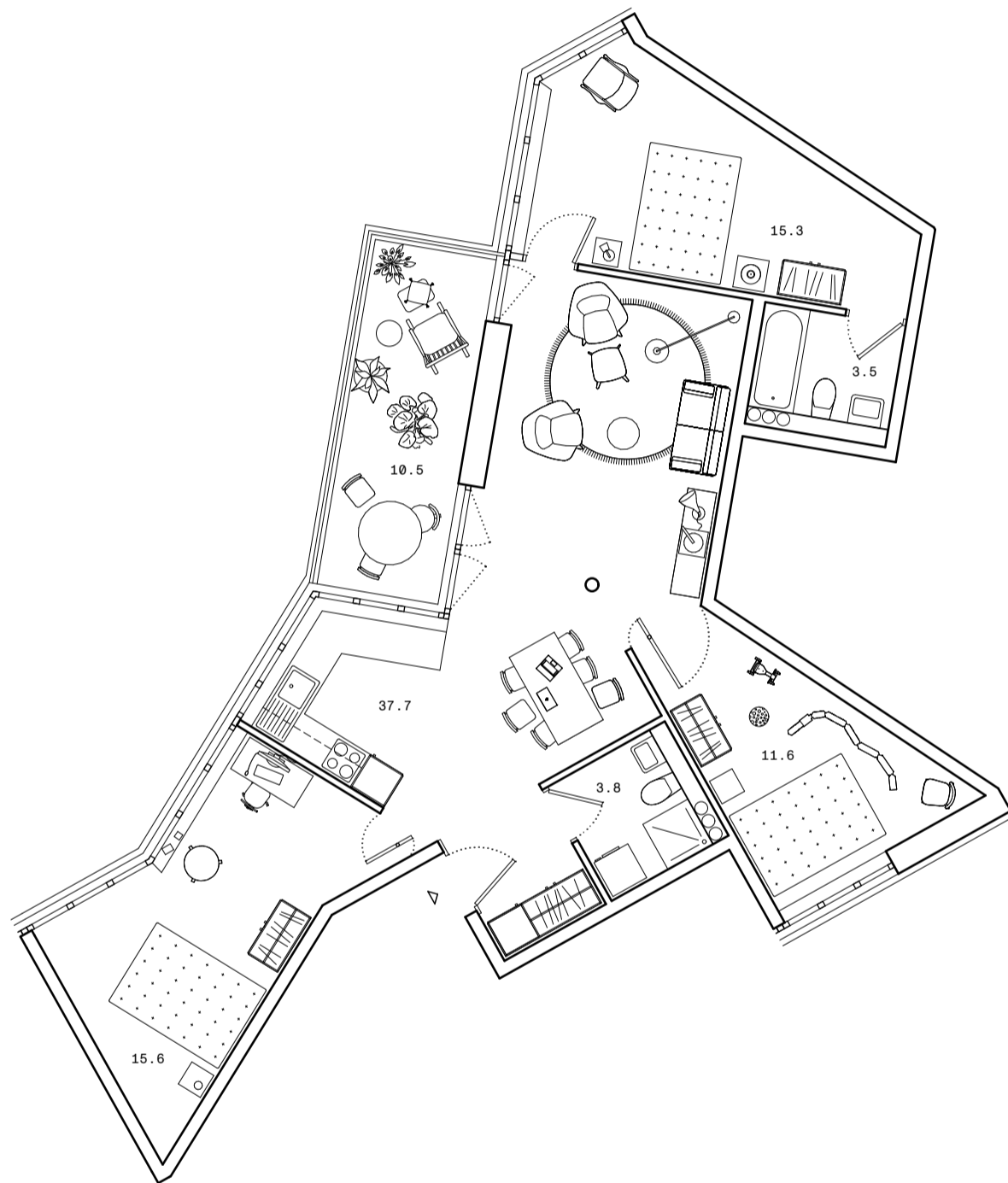
# Persons = # Rooms - 1 = 2P

Net floor area (NFA): 67.7m<sup>2</sup>

NFA per person: 33.8m<sup>2</sup>

New apartment type

1:100



Data

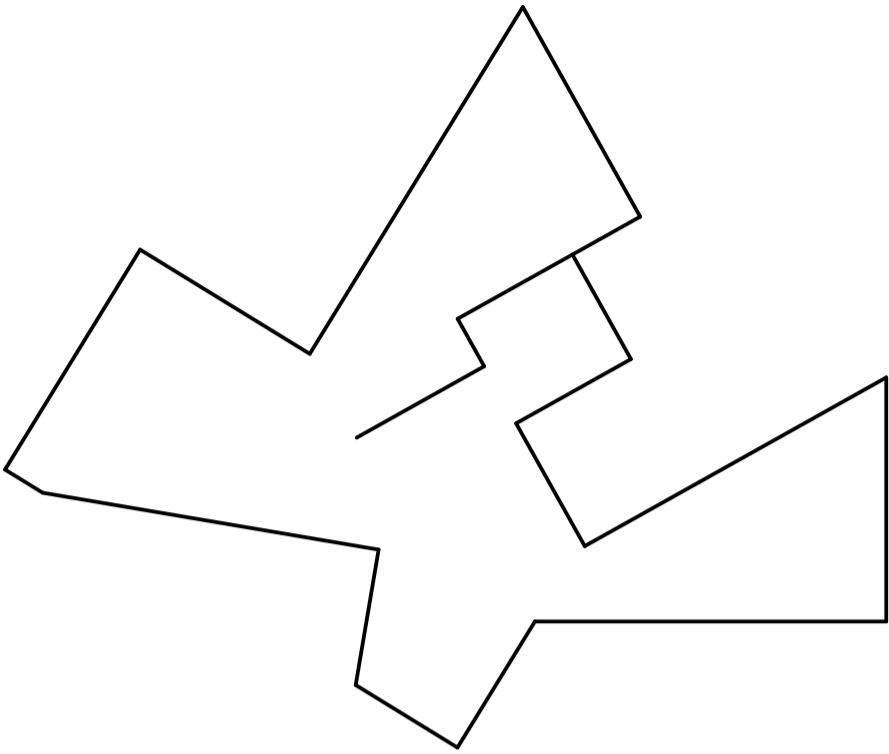
Apartment type: 4.5

# Persons = # Rooms - 1 = 3P

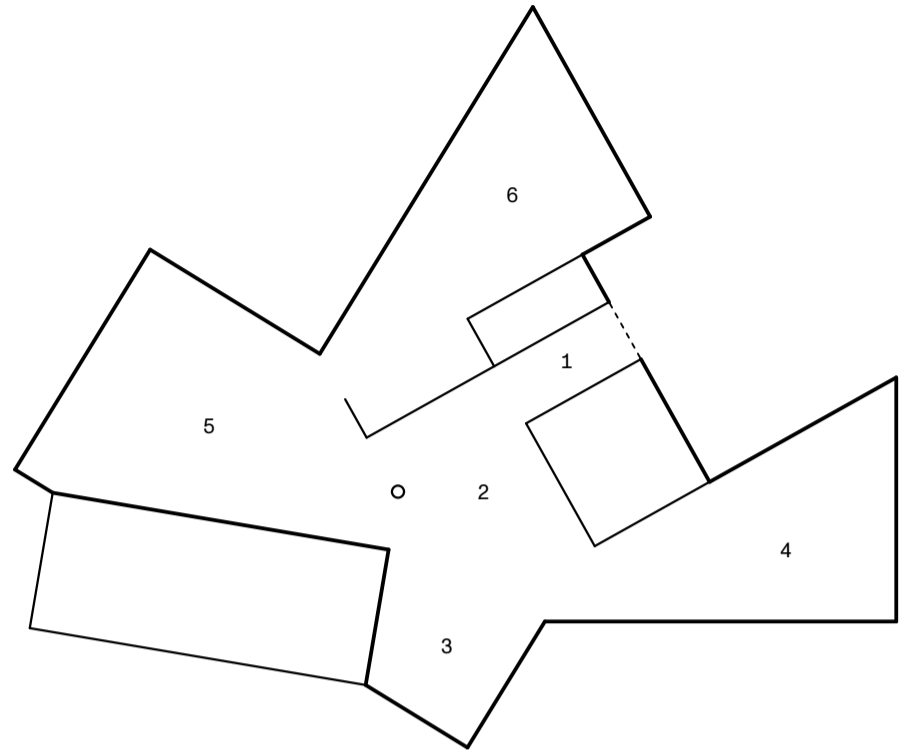
Net floor area (NFA): 87.5m<sup>2</sup>

NFA per person: 29.2m<sup>2</sup>

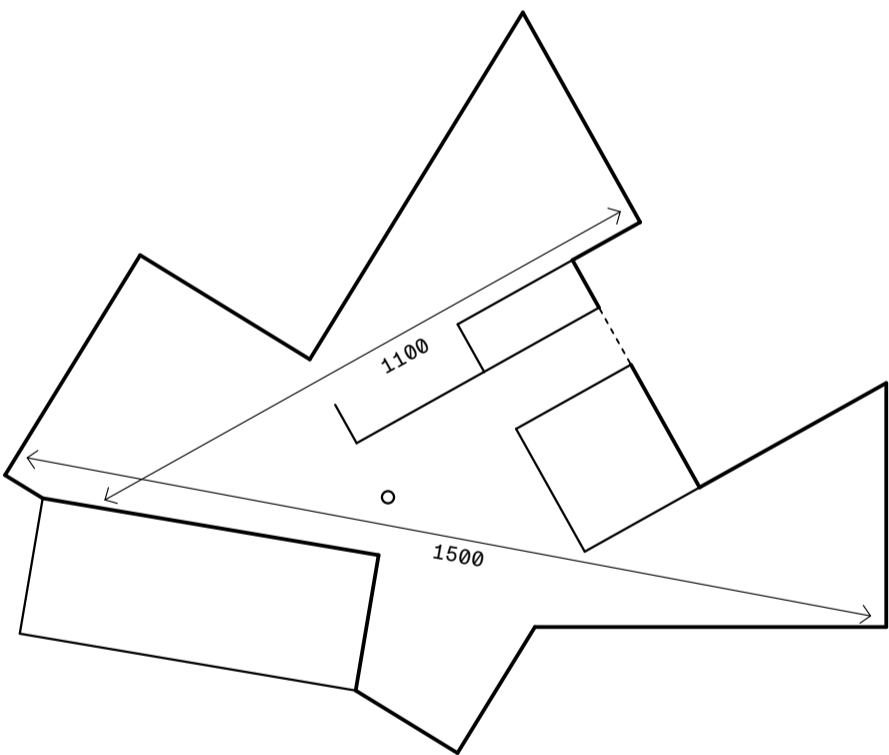
Concept diagram



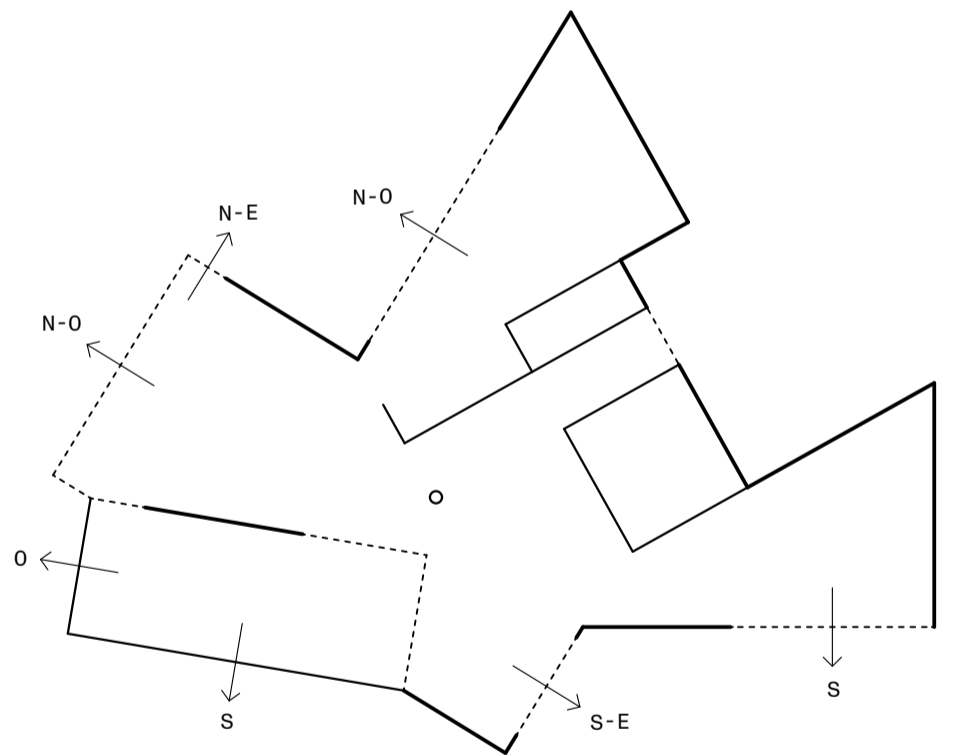
spatial figure



fragmentation zones



extended limits



multiple orientations