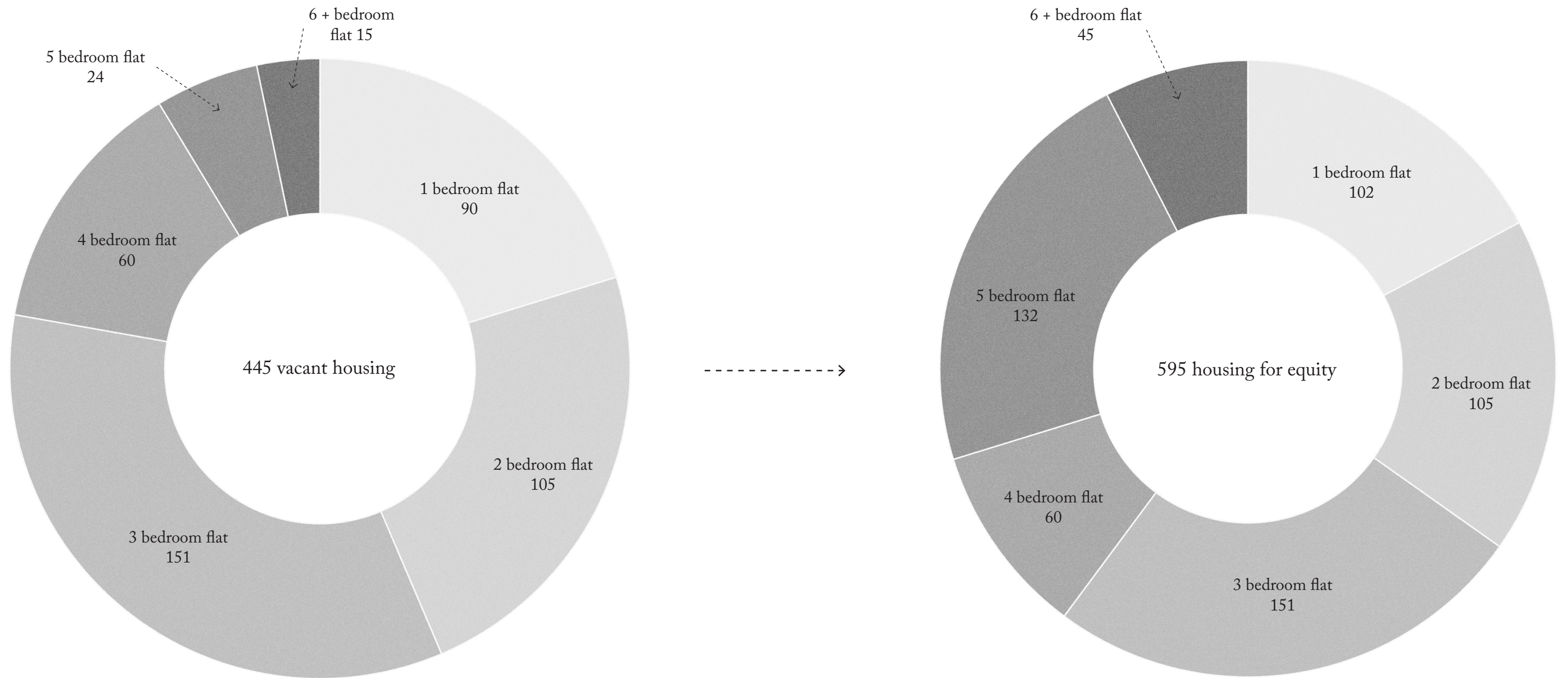


Right to the City
Quality LLM for equity
Colin Baumgartner
Ysaure Landon
Gabriel Treyer

Halt Extraction
RIOT
EPFL Spring 2025

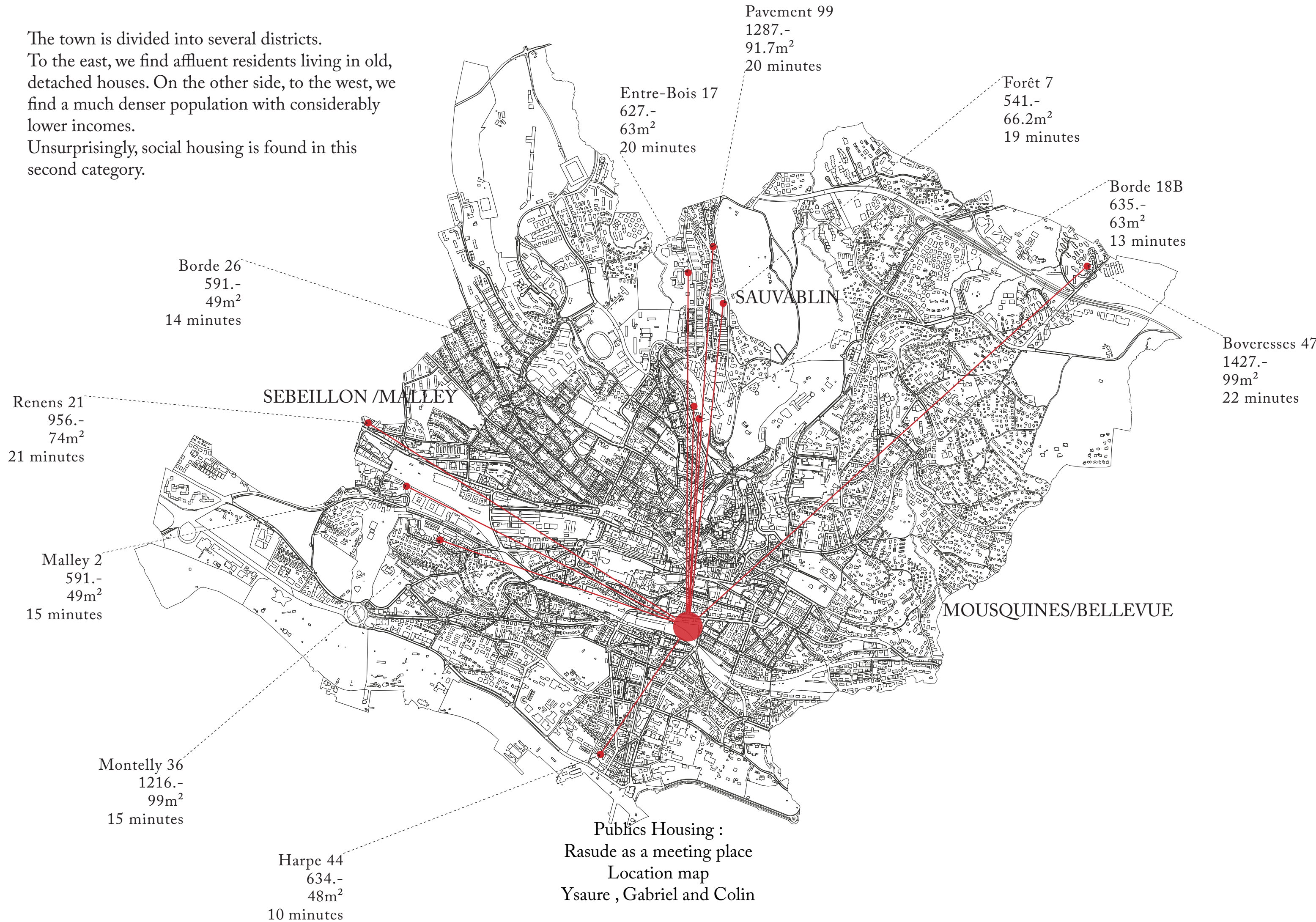
Mobimo and CFF Immobilier plan to allocate 70% of La Rasude to offices, 20% to housing, and 10% to retail. Yet Lausanne faces a shortage of affordable housing, not workspaces. The city intentionally confines public housing to its periphery, reinforcing spatial injustice. What if Rasude became a hinge, linking center and margins ? Our goal is to reveal the potential of the already existing Rasude and ensure dignity for all through the “10 housing commandments”—principles that establish material honesty and quality living to prioritize human needs over market demands.

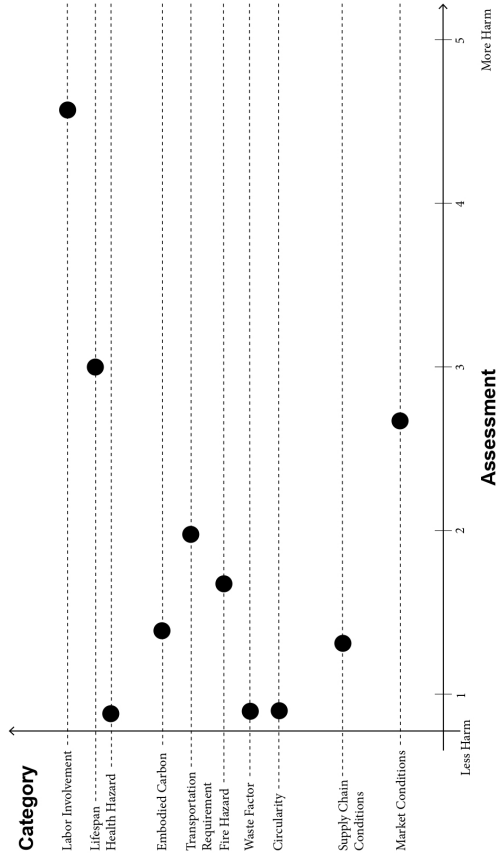


In 2023, the poverty rate in Switzerland stood at 8%. Within this, the most affected profiles were 18% of single-parent households, 25% of single people over 65, and 13% of families with 3 or more children.

Define the right balance
Right to the city -Quality LLM for equity
Colin Baumgartner, Ysaure Landon, Gabriel Treyer

The town is divided into several districts.
To the east, we find affluent residents living in old, detached houses. On the other side, to the west, we find a much denser population with considerably lower incomes.
Unsurprisingly, social housing is found in this second category.





Terra Bloc

Compressed earth brick

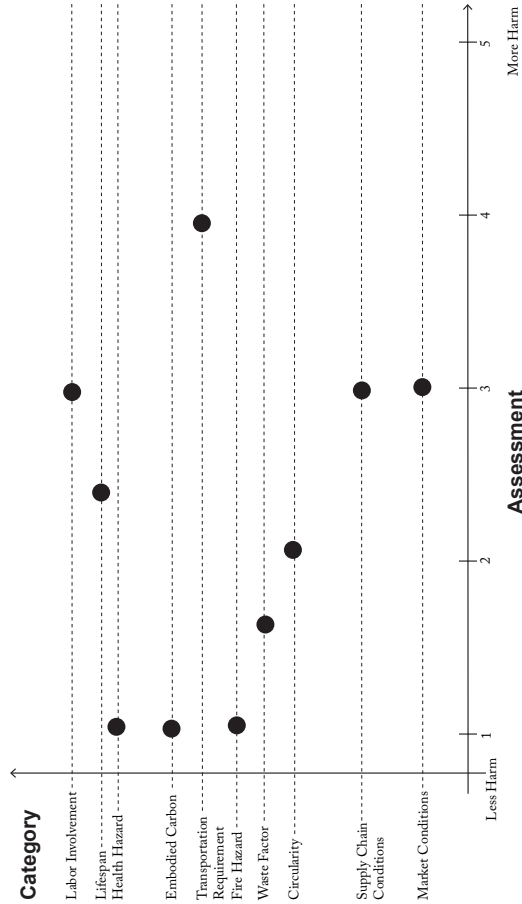
Price 100 CHF/ m²

Lifespan 80-150 years

Embodied Carbon 13kgCO²/m²

Raw Material Earthy excavation debris from construction sites

Production Site Allaman VD/Rickenbach LU



Sheep Wool

Sheep wool insulation panels

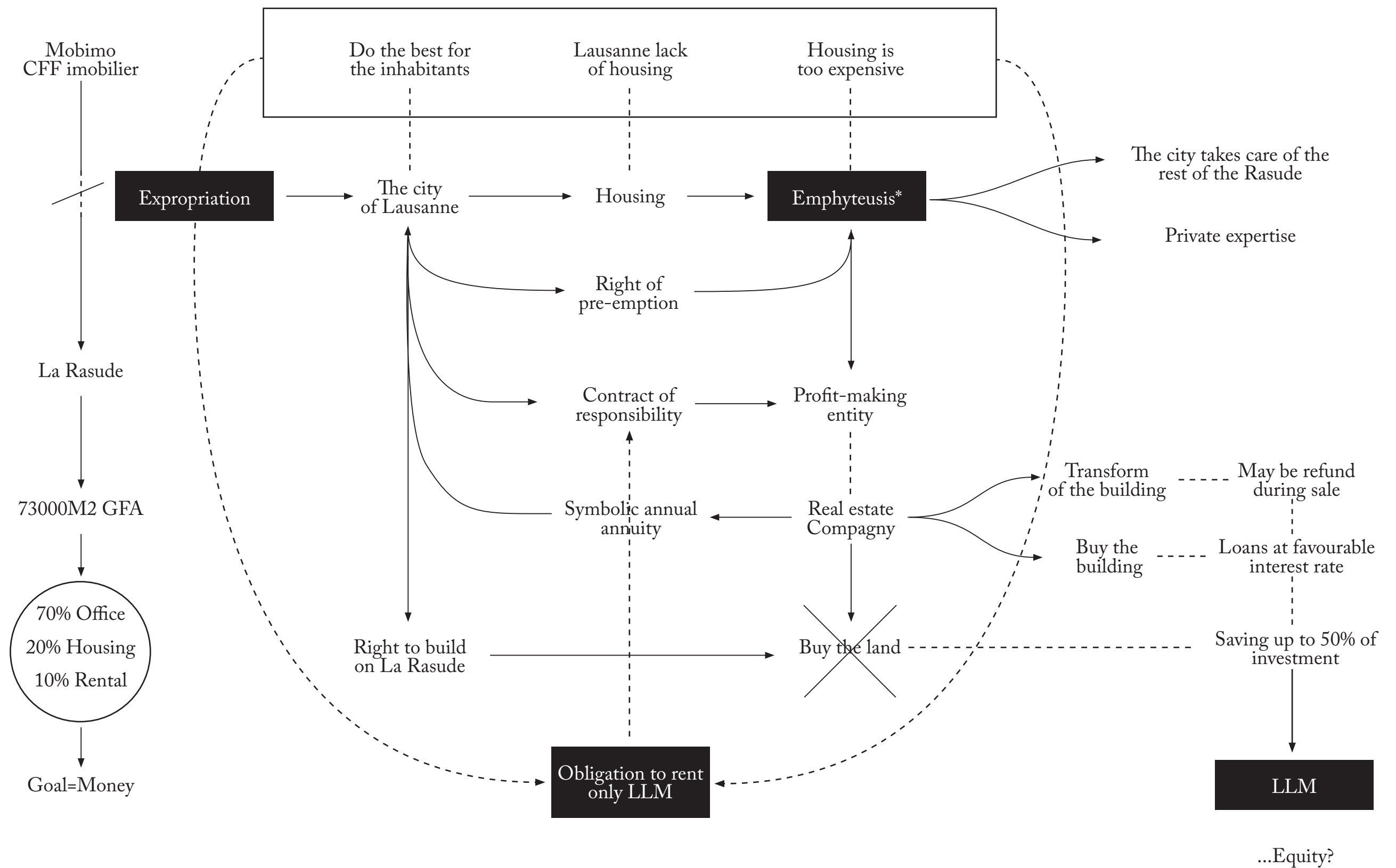
Price 10 - 26 CHF/ m²

Lifespan 75 years

Embodied Carbon 0.302kgCO²/m²

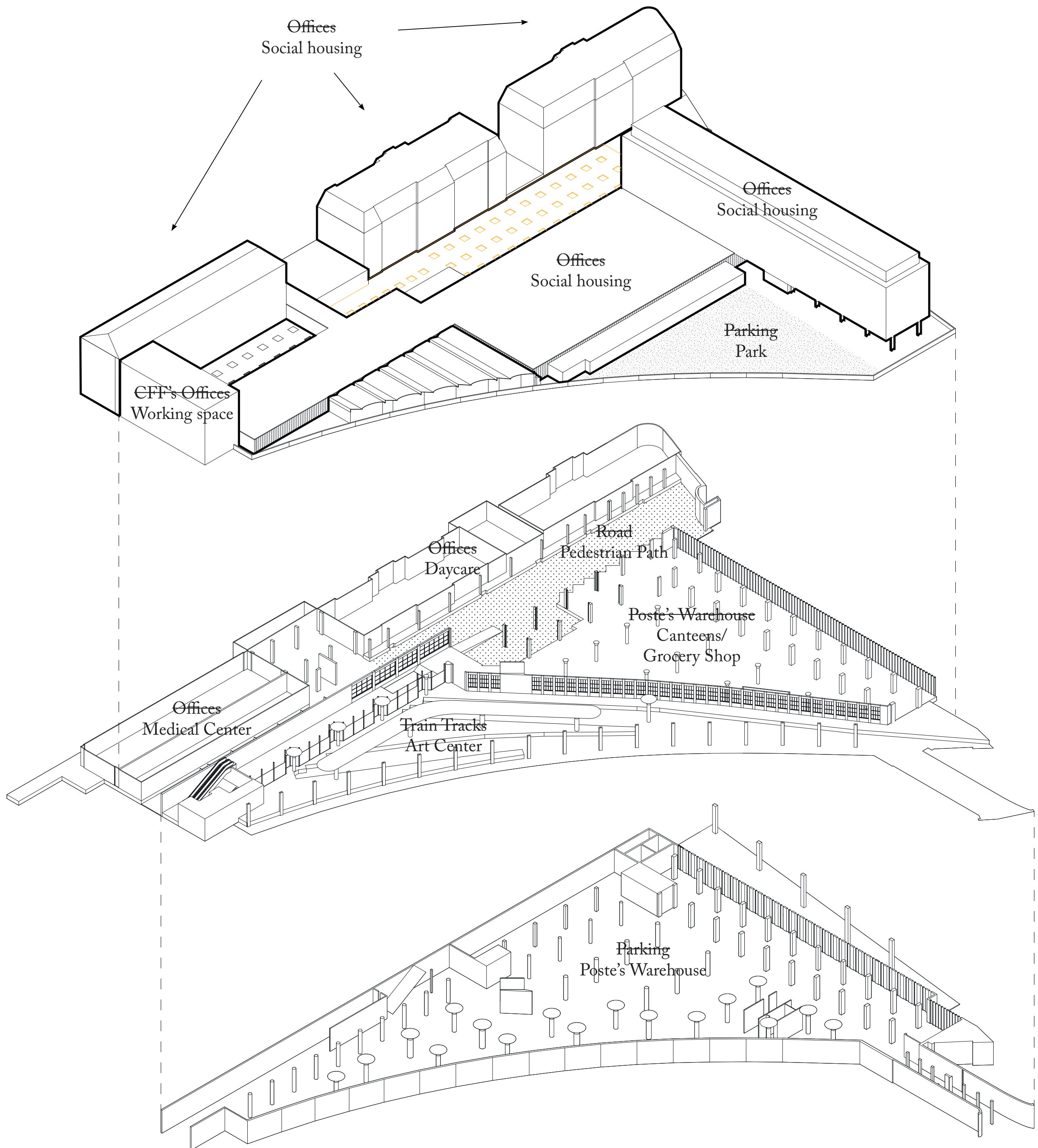
Raw Material Sheep Wool

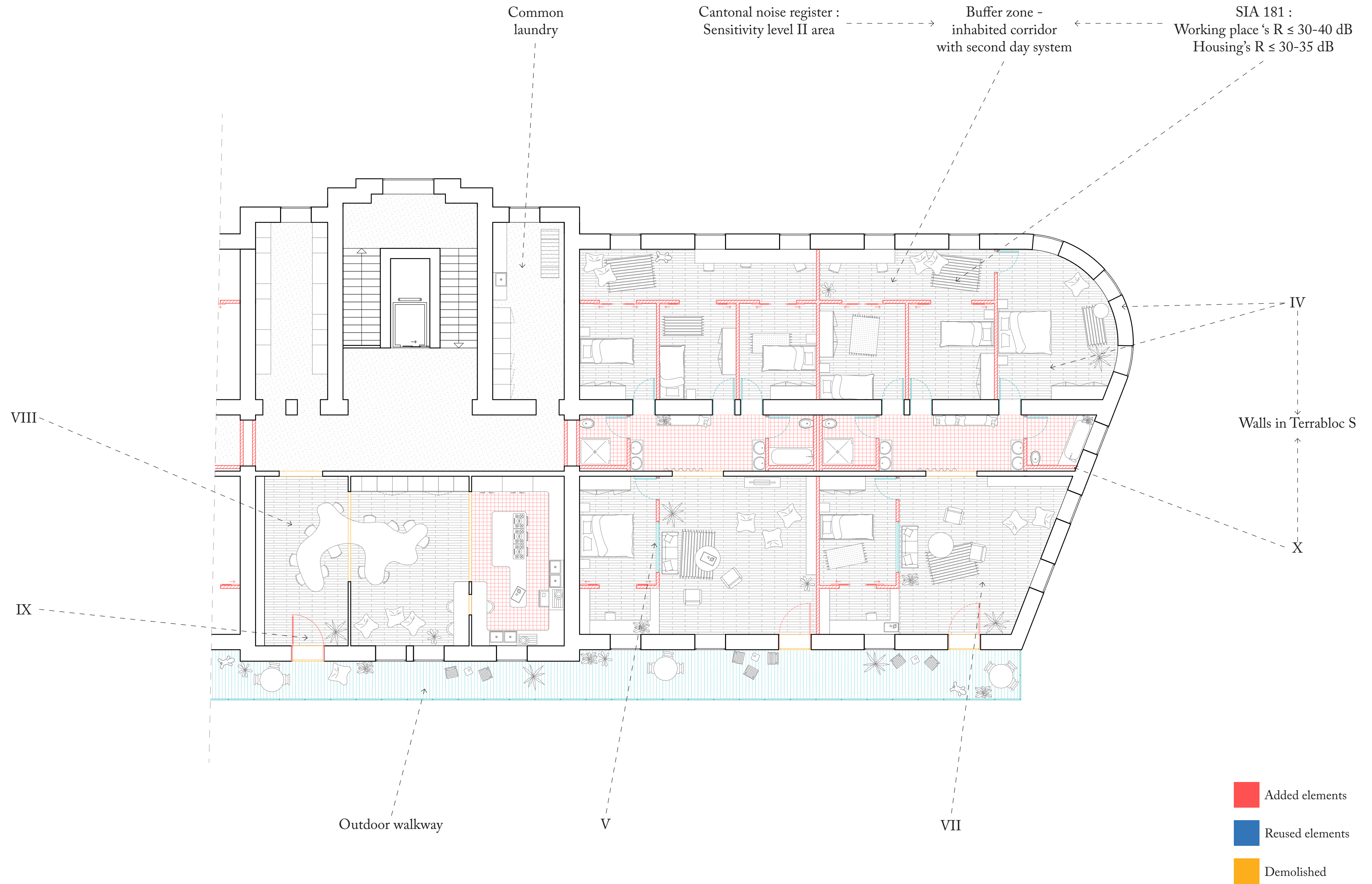
Production Site Amriswil (TG)



**Emphyteusis is a long-term lease granting building rights for a rent*

Scenario for equity
 Right to the city - Quality LLM for equity
 Colin Baumgartner, Ysaure Landon, Gabriel Treyer



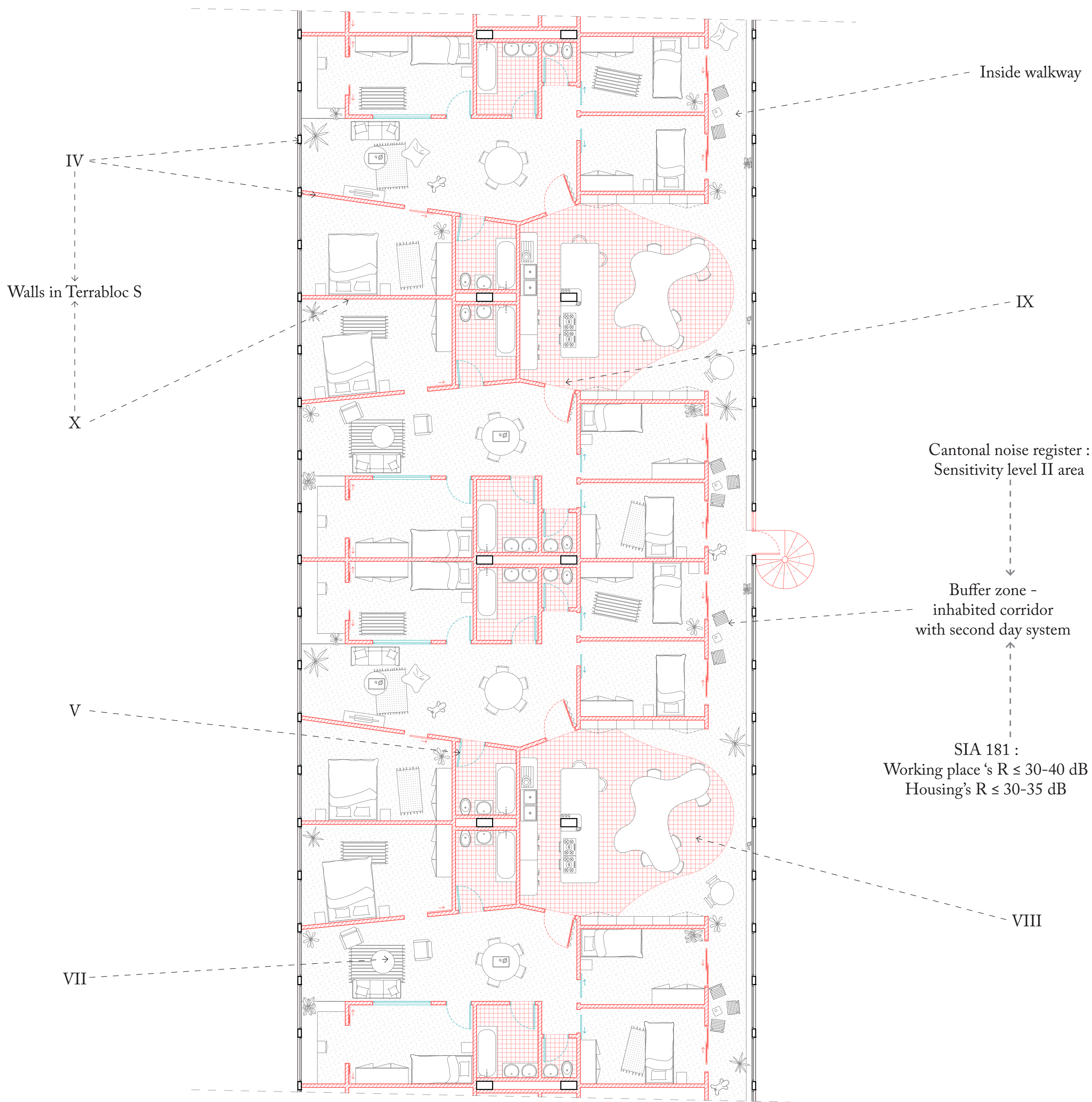


Scale : 1/100

Laverrière

Right to the city - Quality LLM for equity
Colin Baumgartner, Ysaure Landon, Gabriel Treyer





Scale : 1/100

LaBarre
Right to the city - Quality LLM for equity
Colin Baumgartner, Ysaure Landon, Gabriel Treyer

Common garden

IX

Common laundry

Kitchen walkway

VIII

Ground floor

IV

Walls in Terrabloc S and sheepwool

Double height common space

V

X

First floor

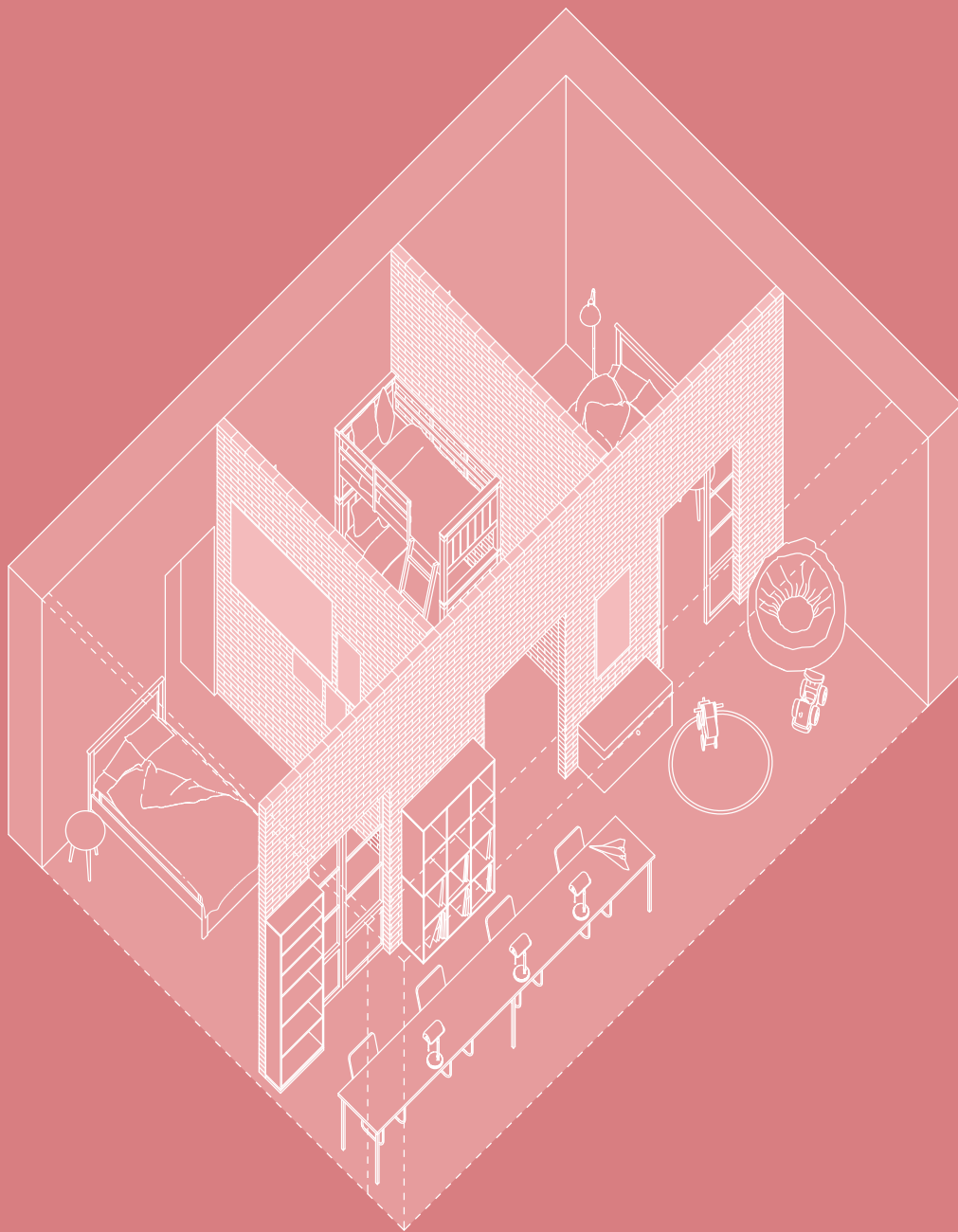
- Added elements
- Reused elements
- Demolished



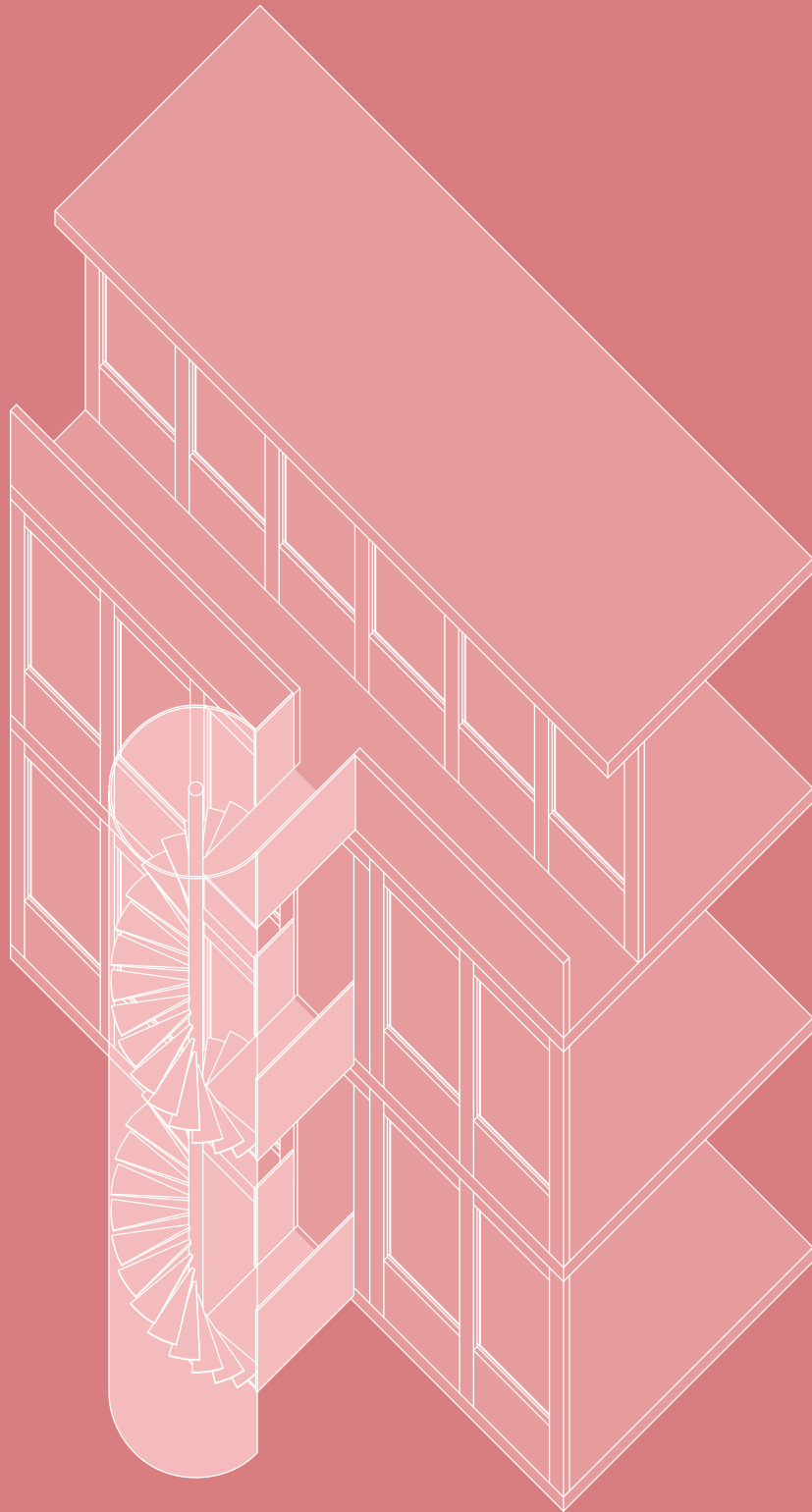
Scale : 1/100

LaGalette

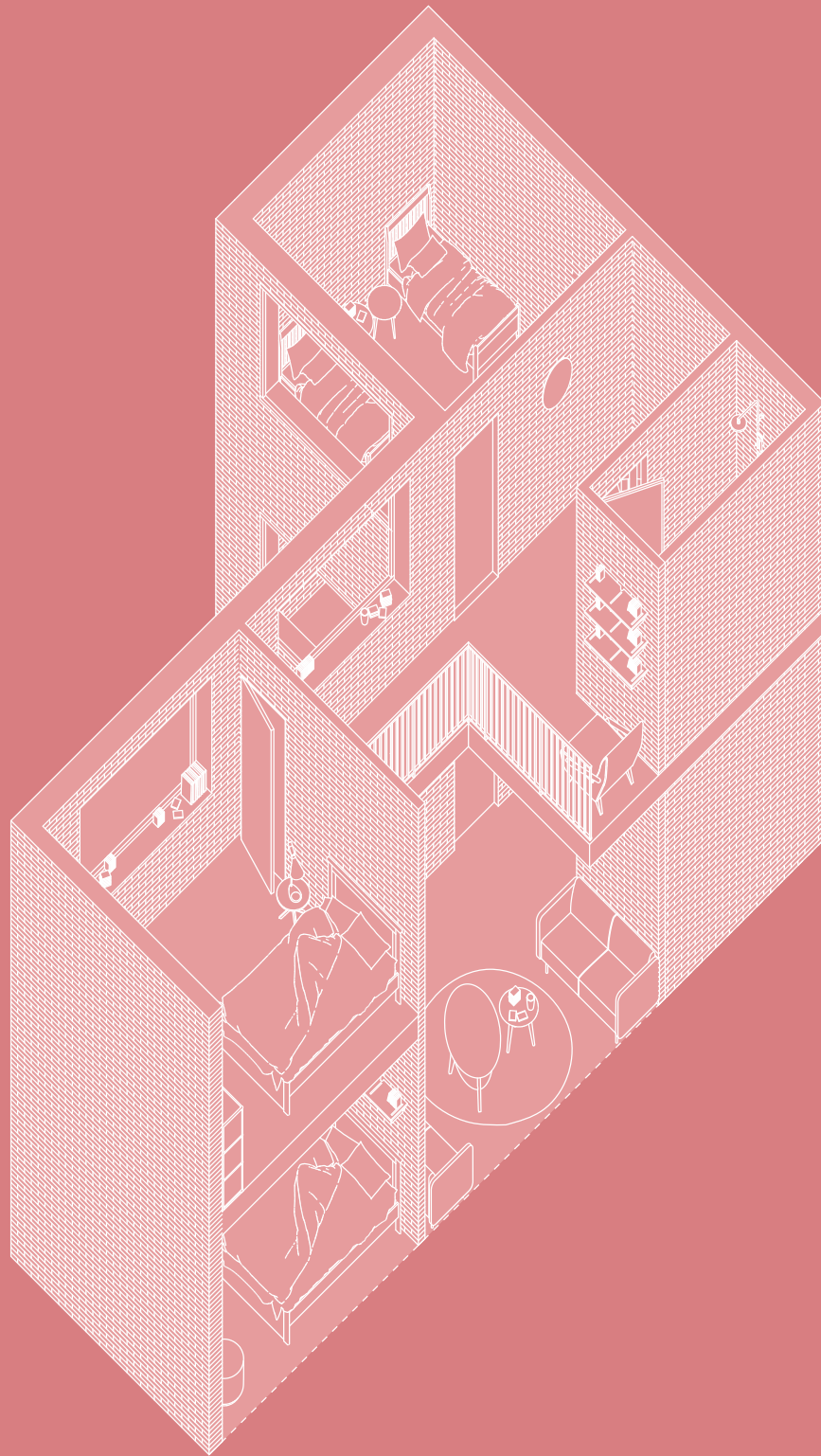
Right to the city - Quality LLM for equity
Colin Baumgartner, Ysaure Landon, Gabriel Treyer



Common bedroom
Right to the city -
Quality LLM for equity
Colin Baumgartner, Ysaure Landon, Gabriel Treyer



Fire escape
Right to the city -
Quality LLM for equity
Colin Baumgartner, Ysaure Landon, Gabriel Treyer



Duplex
Right to the city -
Quality LLM for equity
Colin Baumgartner, Ysaure Landon, Gabriel Treyer



Brian is in the kitchen
Right to the city - Quality LLM for equity
Colin Baumgartner, Ysaure Landon, Gabriel Treyer



What a view!
Right to the city - Quality LLM for equity
Colin Baumgartner, Ysaure Landon, Gabriel Treyer



Welcome home, welcome to la Rasude
Right to the city - Quality LLM for equity
Colin Baumgartner, Ysaure Landon, Gabriel Treyer