

Brief



Reuse & upcycling, zero-waste initiatives, repair and second-hand movements are now part of the political program of an evolving change in the sustainable use of resources and buildings. The study of our architectural heritage in the Alpine region, however, shows that such concepts are not new - they have just been forgotten. Necessity and scarcity have always forced sustainability through improvisation and creativity.

The task for the coming semester is the 1:20 model and subsequent transformation of a historic single family house and barn in Eschen FL into a multi-party house. Object and inventory thereby form the material and planning basis for solutions for the preservation and further use of these resources. The types of contemporary living are explored on the basis of selected exemplary models. The creative fusion of existing and new typology is the design. The idea of a concise architectural work as a repaired or newly assembled and inhabited warehouse of building elements, characterized by tectonic clarity and great atmospheric density, is the goal of the studio.

Seminar week: Alpine Architecture
In-depth exploration of three historic buildings.

Lecturers: Pascal Gnädinger (Models); Stephan Zimmerli (Atmosphere & Presentation); Ramun Capaul (Input during seminar week, Midterm and Final Crits)

Entrepot Building # The House as Inventory & Construction Kit # From Inventory to Re-Design
Principles of adaptive reuse of a historical log house construction

Methodology

Newness is not created through new construction, but through the remodelling of the existing, through which new qualities are achieved, in the sense of uniqueness, depth and complexity. Design through maintenance, repair, re-use and re-utilisation strengthens architectural identity and, according to our thesis, makes architecture formally binding and social-ly relevant (again). From this perspective, the building becomes a repository for material and cultural resources, a ma-terial bank, a storehouse of knowledge and memories for the time of its function and form. The starting point is what already exists, not the blank page.

Using existing material sources and building stock, and selected exemplary references, material resources and typolo-gies are recognised and explored.

The creative merging of existing buildings, inventory and new typology is a central part of the design method. The idea of a concise architectural work as a repaired or newly assembled and inhabited warehouse of building elements, characterised by tectonic clarity and great atmospheric density, is the studio's goal.

Methods

- Building Survey:
Careful examination and meticulous recording of the inventory form the material basis of the design
Output: model 1:50
- References:
Excellent examples (models) for the design of relevant typologies from history are copied, built in the model, an-alyed and explained.
Output: Atmospheric image
- Merging & Design Concept:
The design is the creative combination of the material (inventory, elements of the inventory) and the model (ty-pology). Spatial situations are tried out experimentally on the model. Accidental qualities, unorthodox situations are consciously brought about, accepted and integrated into the design.
Output: Project

Organisation

Semester program SS2024

14.02.2024 14:00, Atelier 15:00 16:00	Semester Kick-off welcome & intro, formation of groups and distribution of work Models with Pascal Gnädinger Site visit in Eschen
29.02.2024	PHASE I – MODEL MAKING Presentation Model and Atmospheric Image I.1 Model of the building in Eschen, 1:50 I.2 Atmospheric Image
04-09.03.2024	Seminar Week “Alpine Timber Architecture” -
	PHASE II – DESIGN
14.03.2024 28.03.2024 27.05.2024	II.1 Presentation “First Intentions” II.2 Midterm Review with Ramun Capaul II.3 Final Review with Ramun Capaul

The projects are presented as PowerPoint presentations on the TV screen in front of the printed AND pinned-up posters and physical models.



PHASE I – MODEL MAKING

I.1 EXISTING BUILDING IN ESCHEN

Support by Pascal Gnädinger

1:50 model of the existing block building and barn in the Kapfstr. Eschen.

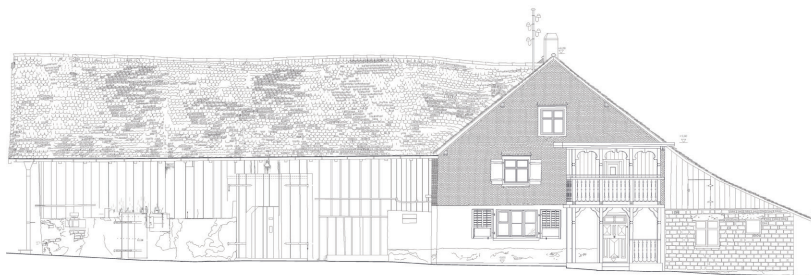


Abb.14 Ansicht Osten

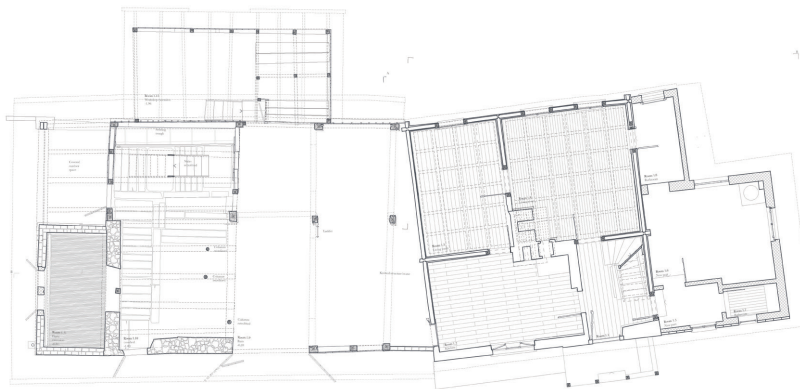


Abb.11 Grundriss Erdgeschoss



I.2 APARTMENT INTERIOUR

Model to produce 1 atmospheric photo of your **reference project**.

It is not necessary to create formal drawings, just the ones you need to make the model.

The model is like the stage of a theatre: it creates an illusion from a certain perspective. It is big scale (1:20, 1:10, 1:5...) to allow detail and good positioning of the camera. It may contain furniture, persons. Everything that influences light, reflects and colours it, casts shadow, must be in the model.

To achieve the effect of real materials several methods are possible:

- print in scale a copy of the material (from a book, photo or internet)
- sheets of paper or cardboard: aquarelle paper can get close to plaster, grey cardboard to concrete etc. The surfaces can be treated with graphite, oils, white glue etc., joints sealed with black duct tape.
- real materials can be used when their texture does not reveal the scale of the model (wood-grain for example)

If there is a view, a background is printed and hung in front of the window, carefully levelling the horizon and the scale of the image.

Sometimes the simplest models give the best result.

When shooting the photo: The appropriate light condition is consciously chosen or created. You may find natural light the easiest to handle. To avoid incoming light from the position of the camera a black blanket or similar should cover the opening.

Minamal corrections are left to Photoshop: Verticals are corrected, brightness, contrast, tonality etc. adjusted. The inserted persons are substituted with the original image.



Alvar Aalto, Villa Mairea, Noormakku, 1939 | student work TU Berlin, Pool Architekten

All analysis documents are presented physically and digitally on moodle.
Documents for table critiques are uploaded weekly on moodle.

The files are put in a folder with the following name:

Nr. hand-in_exercise title_groupX (eg: A3_site analysis_A)

The files are named according to the folders:

Nr. hand-in_exercise title_groupX_document title
(eg: A3_site analysis_A_axonometry)

For individual works:

Nr. hand-in_exercise title_groupX_surname name_document title
(eg: A3_site analysis_A_Dupont Jean_axonometry)

When not indicated otherwise:

- drawings are saved as high resolution PDF with a resolution of 300dpi
- images are saved as JPG with a resolution of 300dpi (no PSD, TIFF etc.)

Tools

Studio

You document your design research and thoughts in a sketchbook that you bring to the discussions.

You need to bring to every table critique the following tools to help express your arguments with drawings and to help to create a dialogue.

- sketch roll, 24 gr, max 30gr.
- pencils 0.5/0.7/1.0 mm, 2B
- pencils 2mm, 5mm, 6B

Seminar week

- (double) meter stick;
- plummet (Senkblei) & thin cords
- laser distance meter
- rotary laser and leveller (provided by studio)
- large sheets of paper
- laptops with corresponding chargers, mouses etc

Seminar Week

“Alpine Timber Architecture”

Seminar week: Alpine Architecture
In-depth exploration of three historic buildings.

The studio will be split in three groups of 5-6 students who will inhabit each of the three selected houses during two day in turns. During your stay, you will be asked to survey relevant spatial and constructive moments of the buildings. The drawings will be drawn, after careful observation and understanding, meticulously in the bluegreen color code.

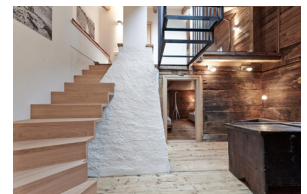
An input is given by Capaul & Blumenthal in the Türalihaus.

Houses:

Schindelhaus - Ferien im Baudenkmal Quartenerstrasse 20
8884 Oberterzen
St Gallen, Schweiz
Koordinaten: 47.102410000, 9.256660000

Stüssihofstatt - Ferien im Baudenkmal Mätteli 1
6465 Unterschächen
Uri, Schweiz
Koordinaten: 46.862500000, 8.771120000

Türalihaus Oben | Wohnung 2.Obergeschoss - Ferien im Baudenkmal
Hauptstrasse
7122 Valendas
Graubünden, Schweiz
Koordinaten: 46.788140000, 9.282780000



Schindelhaus, Oberterzen

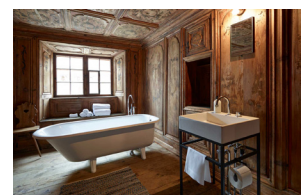


Stüssihofstatt, Unterschächen

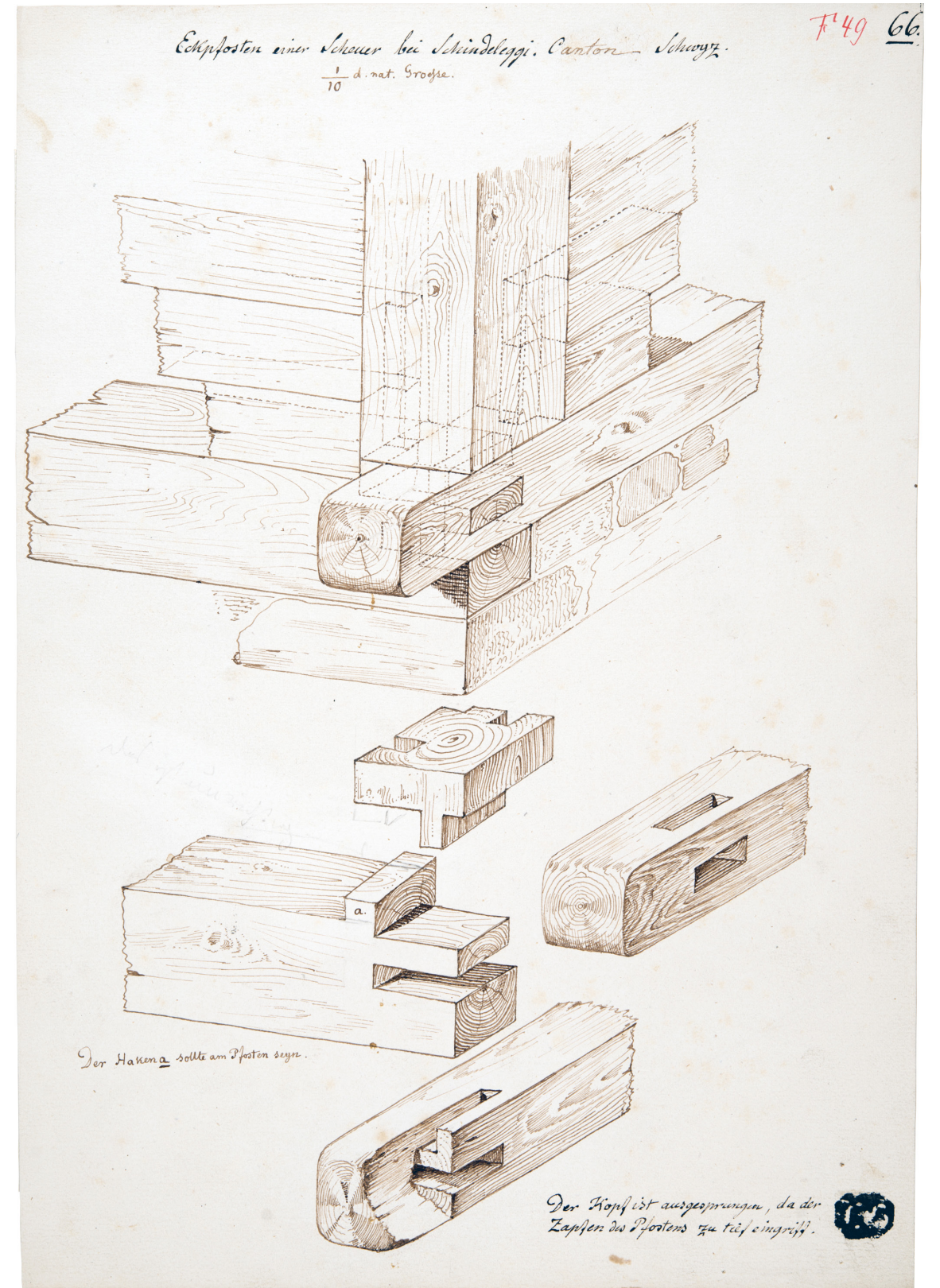
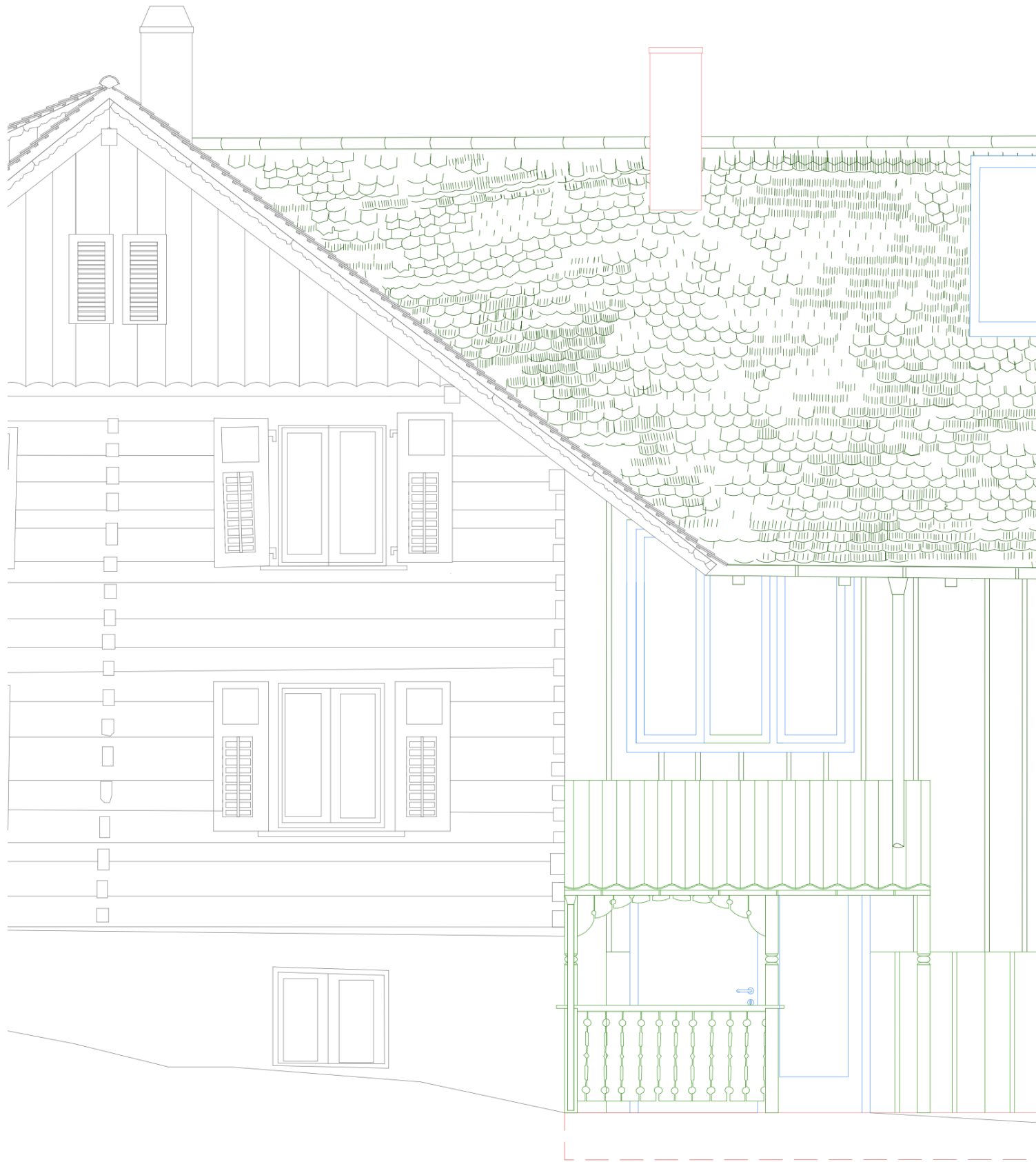
Monday/Tuesday, 04.-05.03.2024	Group 1	Schindelhaus
	Group 2	Stüssihofstatt
	Group 3	Türalihaus
Wednesday/Thursday, 06.-07.03.2024	Group 1	Stüssihofstatt
	Group 2	Türalihaus
	Group 3	Schindelhaus
Friday/Saturday, 08.-09.03.2024	Group 1	Türalihaus
	Group 2	Schindelhaus
	Group 3	Stüssihofstatt

Costs: around 450 CHF for accomodation.

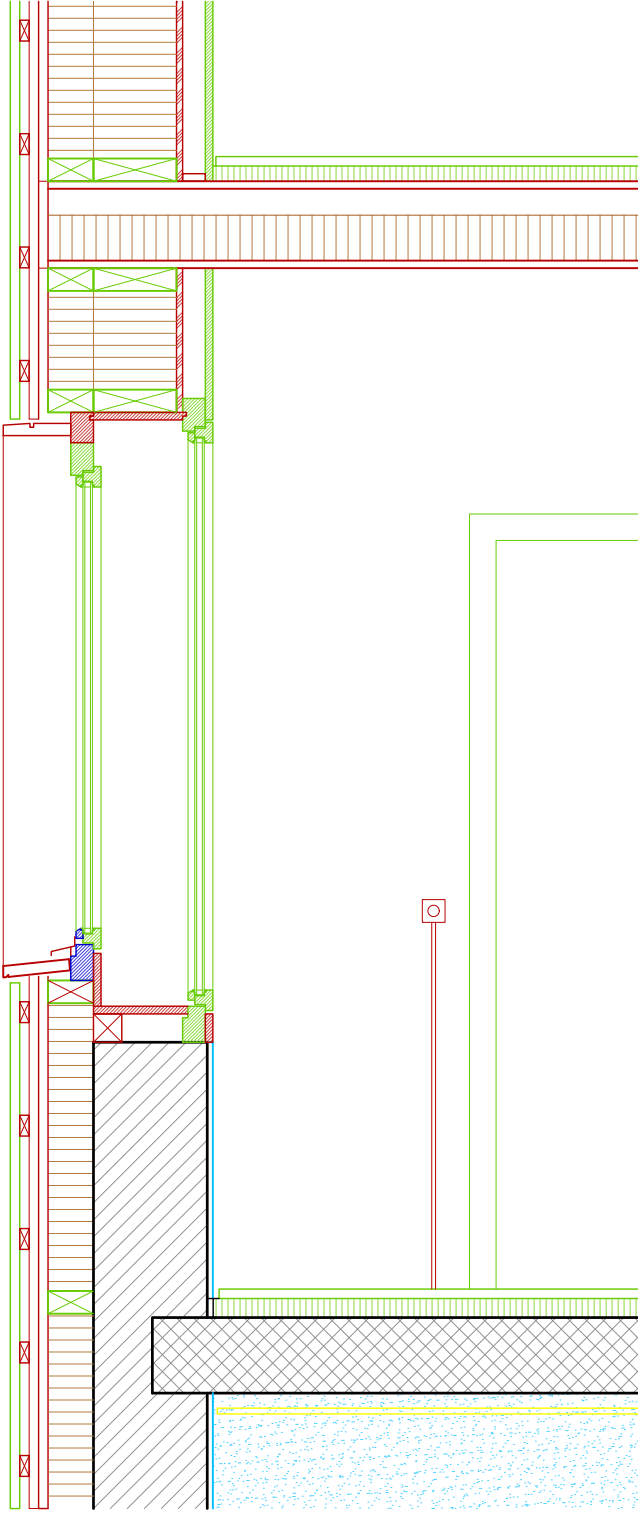
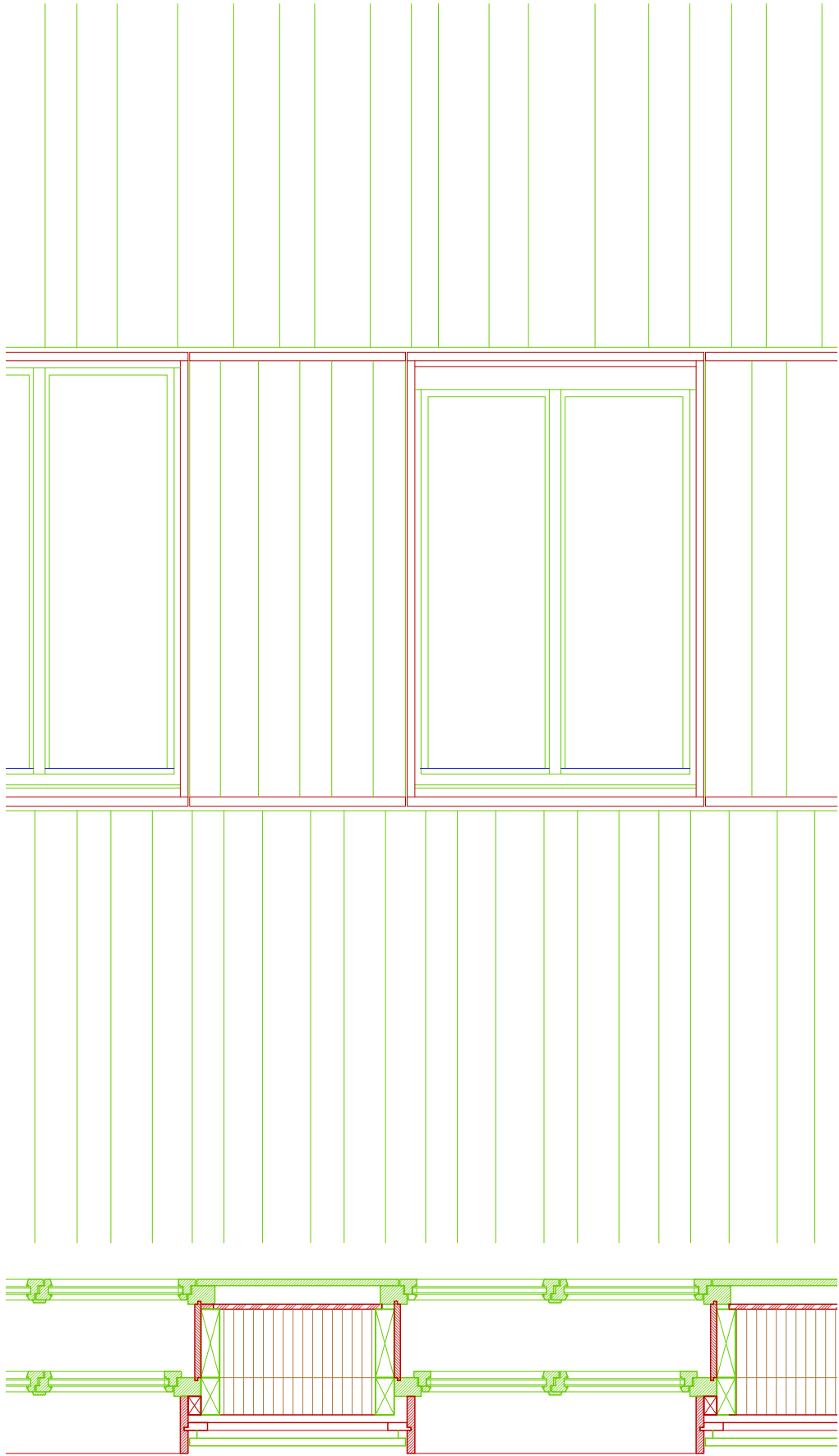
Bring: sketchbook, analogue and digital drawing utensils



Türalihaus, Valendas



Drawing Code
November 2023



Fenestration
Reuse windows, timber frames,
doubled up, repaired, completed

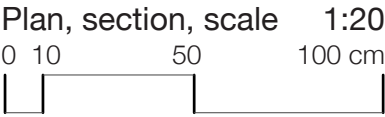
Wall composition
Timber plank cladding 20 mm
Battening 50 mm
Particleboard 18 mm
Jeans thermal insulation 120 mm
Existing masonry wall 305 mm
Plaster refreshed

Existing = black
New = red
Demolition = yellow

ReUSE: reuse of building *elements* = green

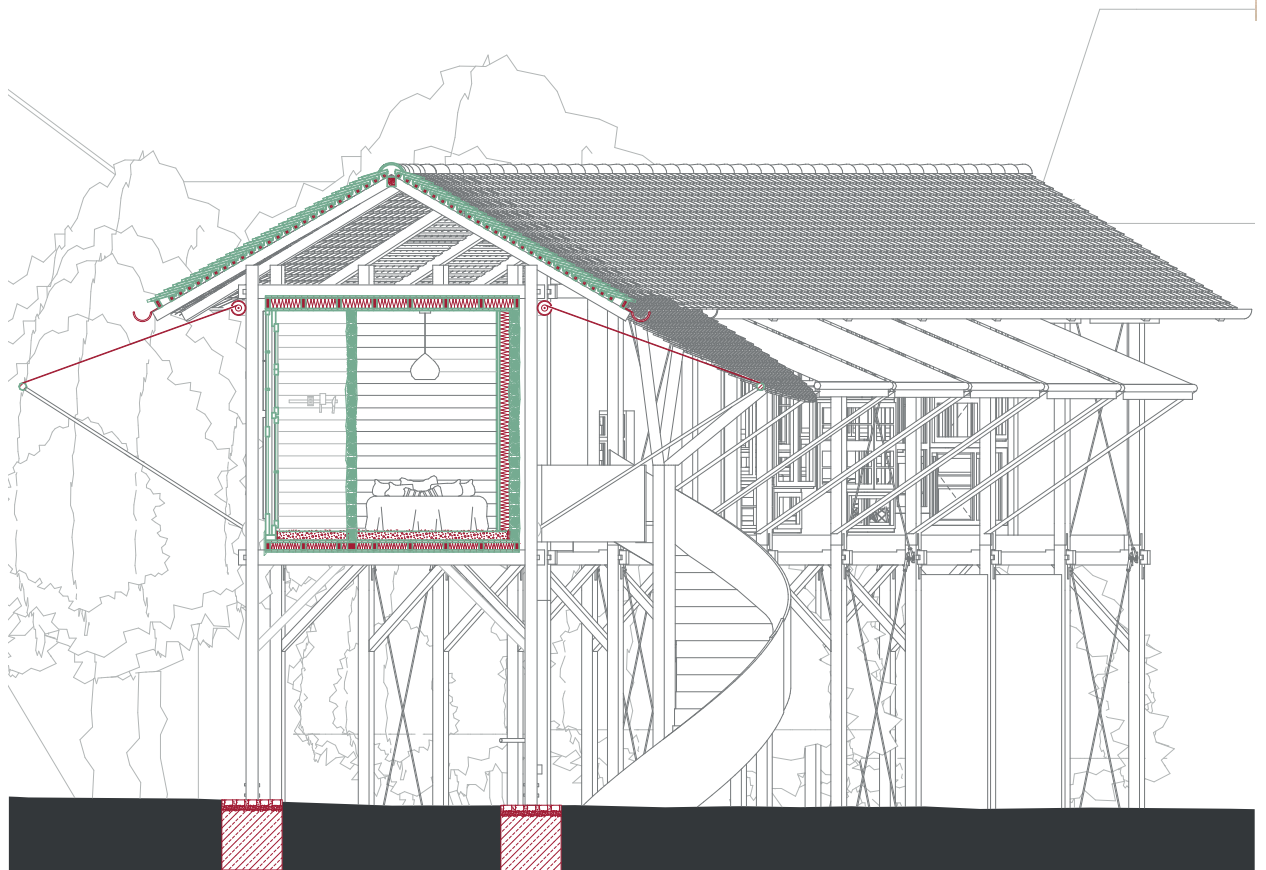
RePAIR: repair the existing & *elements* = blue
ReFURBISH: refresh the existing = light blue

ReCYCLE: recycle building *materials* = brown



II.1 – Design Synthesis

In the Design you will transform the existing building in Eschen into a multi-party house. Innovative forms of living together are explored. Essential qualities of the analysed reference apartment, spatial and atmospheric, inform the design process.



Critiques

II.2 – Midterm Review

March 28, 2024 Requirements

The results of **Phase I (Analysis)** are pinned up and are part of the review.

Layout:

All plans, illustrations and visualizations are to be presented on min. 6 **horizontal** A0 sheets. The number and layout of the sheets is adapted to the individual project.

Color code for architectonic drawings: black and grey.

Color code for construction drawings:

Demolition: **yellow**; new: **red**; reuse elements: **green**; repair: **blue**;

vegetation: **grey**

a) 1:500 site plan (Schwarzplan)

always including the site and its surroundings

b) 1:200 site model (group model, submission 14.03.2024)

c) 1:200 model of the project

d) 1:100 floor plans, sections, elevations, *always including context!*

e) 1:20 section, using the color code

II.3 – Final Review

December 13, 2023 Requirements

a) 1:500 site plan (Schwarzplan)

always including the site and its surroundings

b) 1:200 model of the project

c) 1:50 floor plans, sections, elevations, *always including context!*

d) Model 1:50

e) 1:20 section, using the color code

g) min. 1 Exterior visualization (A1)

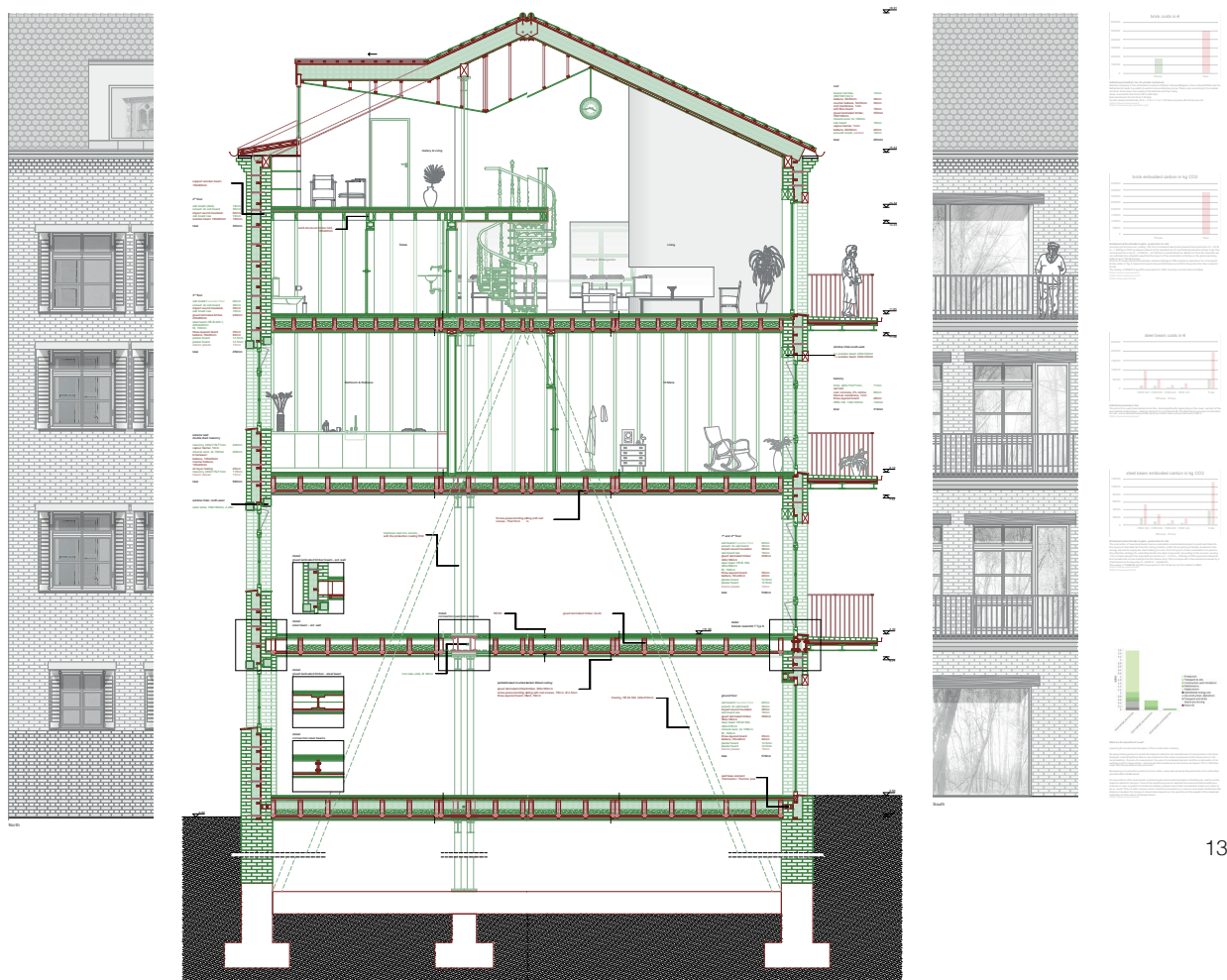
Showing relation to context. Photoshop collage.

h) min. 1 Interior visualization (A1) (model photo)

showing light and spatial atmosphere. This atmospheric image will be moderated in a workshop with Stephan Zimmerli.

Layout:

All plans, illustrations and visualizations are to be presented on min. 8 A0 sheets.



Ablaufplan des Semesters mit Lerninhalten

SS 2024

18.12.2023

ADVANCED STUDIO Upcycling
05.02. - 09.02. Welcome days & Cross Faculties Blockwoche
ENTWURFSTHEMA:

Daniel Stockhammer & Csaba Tarsoly

Hinweis: Wiss Schreiben: 12 Lektionen; Preliminary 8 Lek., MSc Thesis 4 Lek.

UPEND

		1. Week	2. Week	3. Week	4. Week	5. Week	6. Week	7. Week	8. Week	9. Week	10. Week	11. Week	12. Week	13. Week	14. Week	15. Week	16. Week	17. Week	18. Week	19. Week	20. Week	20. Week	
SS2024																	Final Presentation (Mo. 27.05.)						
								Zwischenkritik Advanced Studios, Thesis															
																	Endkritik Preliminary + MSc Thesis + Aufbau Sommerausstellung						
WEDNESDAY		14.02.2024	21.02.2024	28.02.2024	06.03.2024	13.03.2024	20.03.2024	27.03.2024	03.04.2024	10.04.2024	17.04.2024	24.04.2024	01.05.2024	08.05.2024	15.05.2024	22.05.2024	29.05.2024	05.06.2024	12.06.2024	19.06.2024	Exam week (24.6.-28.6.)		
	1. Lektion	Kick-Off anschließend Interview und Studiowahl!	Modelmaking with Pascal Gnädinger / Studio Work	Studio Work	Exkursionswoche / Introductions by Ramun Capaul & n.n. Monday:	Studio Work	workshop atmospheric images / photo model (S. Zimmerli)	Studio Work	Osterferien (29.03. - 05.04.2024)	Studio Work	Studio Work	Studio Work	Feiertag	Studio Work	atmospheric images / photo model (S. Zimmerli, online)	Studio Work	Endkritik Preliminary + MSc Thesis + Aufbau Sommerausstellung	vorlesungsfrei	vorlesungsfrei	vorlesungsfrei	Prüfungen Essentials		
	2. Lektion	Interview und Studiowahl!																					
	3. Lektion																						
	4. Lektion																						
	5. Lektion	ab 14 h Start Entwurfstudios / Introduction (D. Stockhammer & C. Tarsoly) with Pascal Gnädinger	Modelmaking with Pascal Gnädinger / Studio Work	Studio Work	Tuesday	Studio Work	workshop atmospheric images / photo model (S. Zimmerli)	Studio Work		Studio Work	Studio Work	Feiertag	Studio Work	atmospheric images / photo model (S. Zimmerli, online)	Studio Work	Endkritik Preliminary + MSc Thesis + Aufbau Sommerausstellung							
	6. Lektion																						
	7. Lektion																						
	8. Lektion																Wednesday						
THURSDAY		15.02.2024	22.02.2024	29.02.2024	07.03.2024	14.03.2024	21.03.2024	28.03.2024		04.04.2024	11.04.2024	18.04.2024	25.04.2024	02.05.2024	09.05.2024	16.05.2024							23.05.2024
	1. Lektion	Studio Work	Table Crit (D. Stockhammer & C. Tarsoly)	submission 1:20 model (grading by Pascal Gnädinger) / submission references (housing) /		Table Crit (D. Stockhammer & C. Tarsoly) submission 1:200 site model	Table Crit (D. Stockhammer & C. Tarsoly) Table Crit (S. Zimmerli)	Zwischenkritik Advanced Studios, Thesis	Osterferien	Table Crit	Table Crit	Table Crit	Table Crit	Feiertag	Table Crit	Table Crit		Feiertag	vorlesungsfrei	vorlesungsfrei	vorlesungsfrei	Prüfungen Essentials	
	2. Lektion																						
	3. Lektion																						
	4. Lektion																						
	5. Lektion	Studio Work	Table Crit (D. Stockhammer & C. Tarsoly)	submission 1:20 model (grading by Pascal Gnädinger) / submission references (housing) /		Table Crit (D. Stockhammer & C. Tarsoly) submission 1:200 site model	Table Crit (D. Stockhammer & C. Tarsoly) Table Crit (S. Zimmerli)	Zwischenkritik Advanced Studios, Thesis		Table Crit	Table Crit	Table Crit	Table Crit	Feiertag	Table Crit	Table Crit							
	6. Lektion																						
	7. Lektion																						
	8. Lektion																						

27.05.2024 + 28.05.2024: Präsentation aller Foundation und Advanced Studios inkl. Bachelorthesen
29.05.2024: Präsentation der Preliminary Study + Masterthesen + Aufbau Sommerausstellung. Ab 17 Uhr: Vernissage der Sommerausstellung und Sommerfest

Prüfungen/Kritiken
Vorlesungsfrei/Feiertage/Ferien