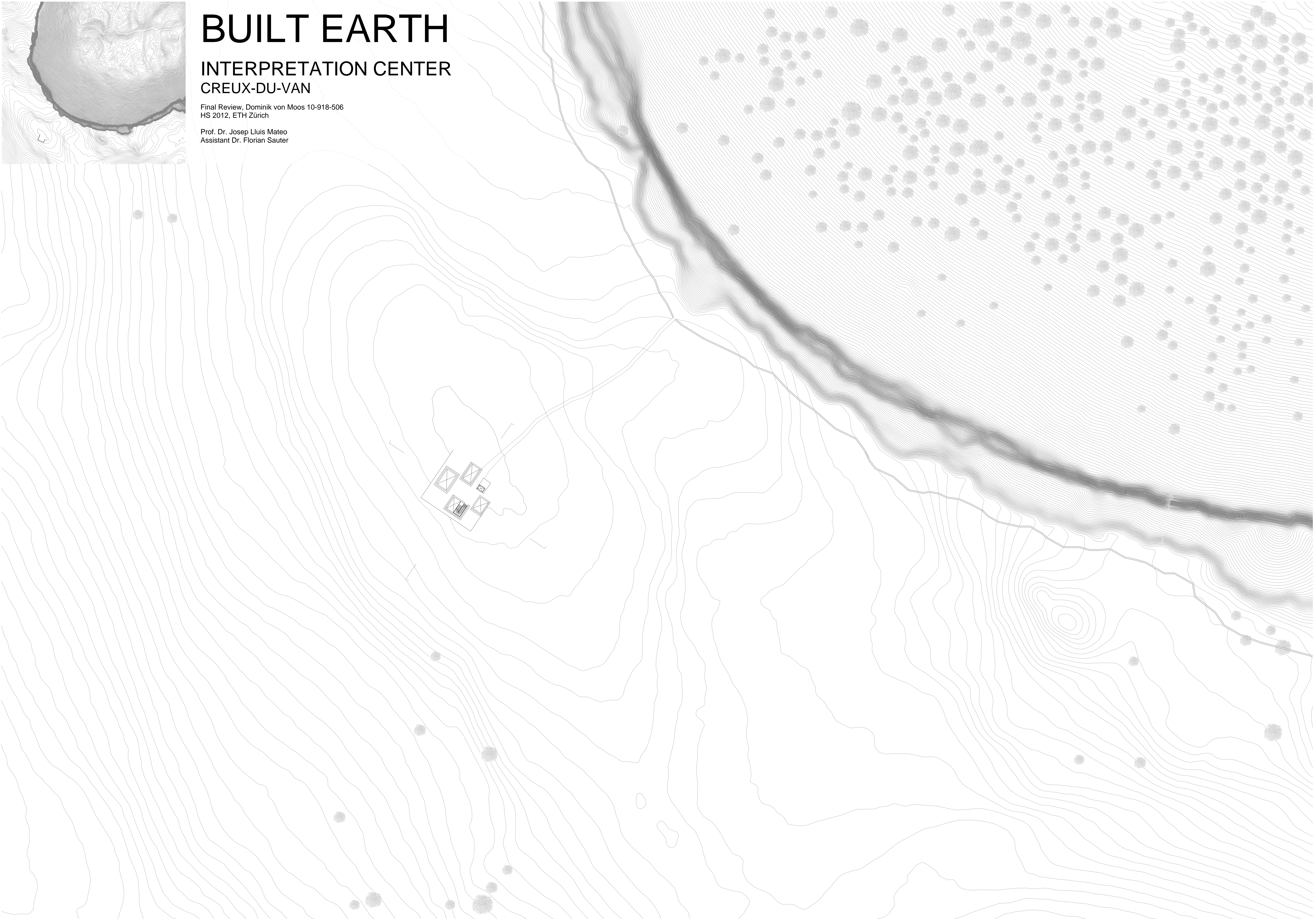
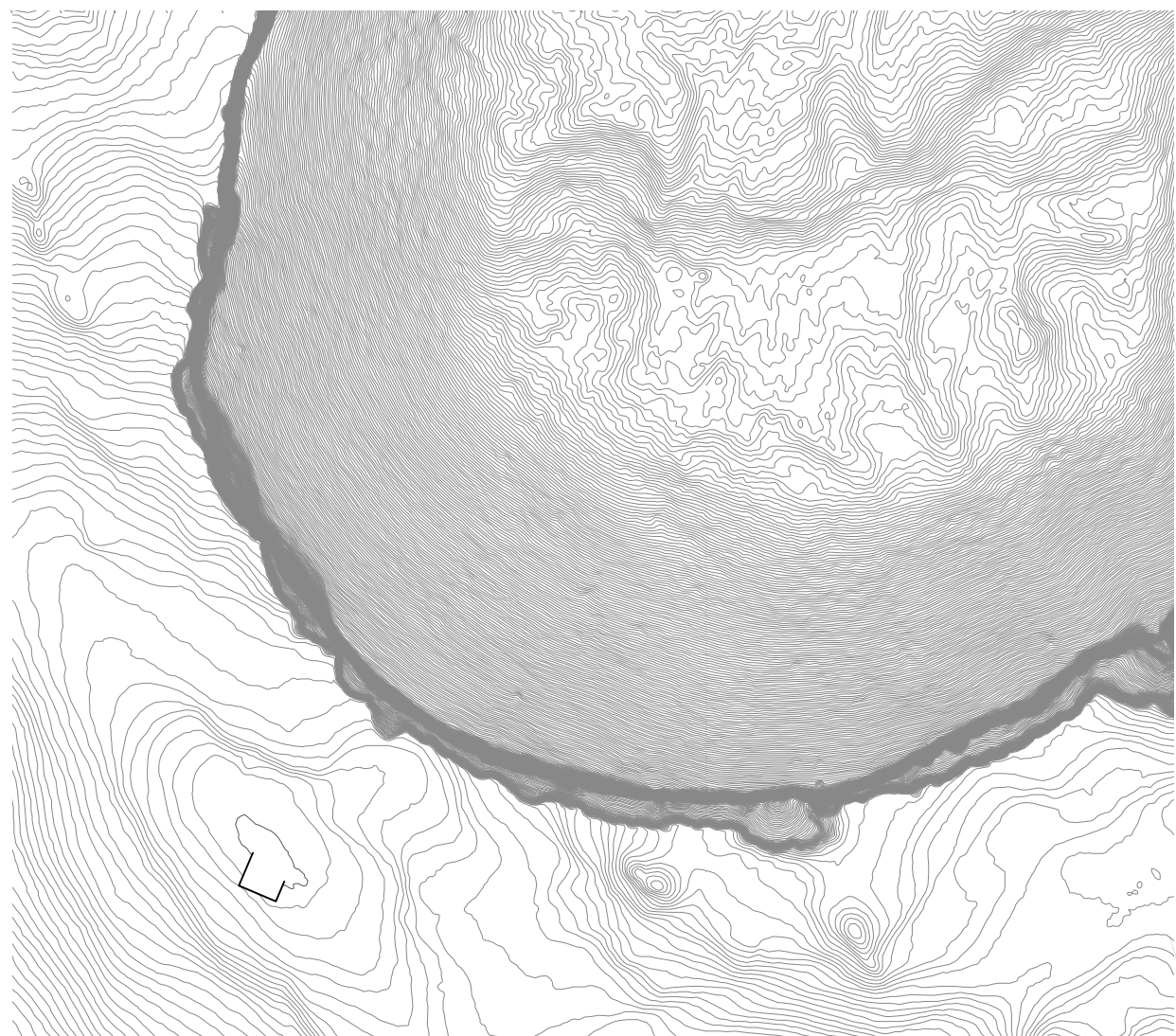


BUILT EARTH

INTERPRETATION CENTER CREUX-DU-VAN

Final Review, Dominik von Moos 10-918-506
HS 2012, ETH Zürich

Prof. Dr. Josep Lluís Mateo
Assistant Dr. Florian Sauter



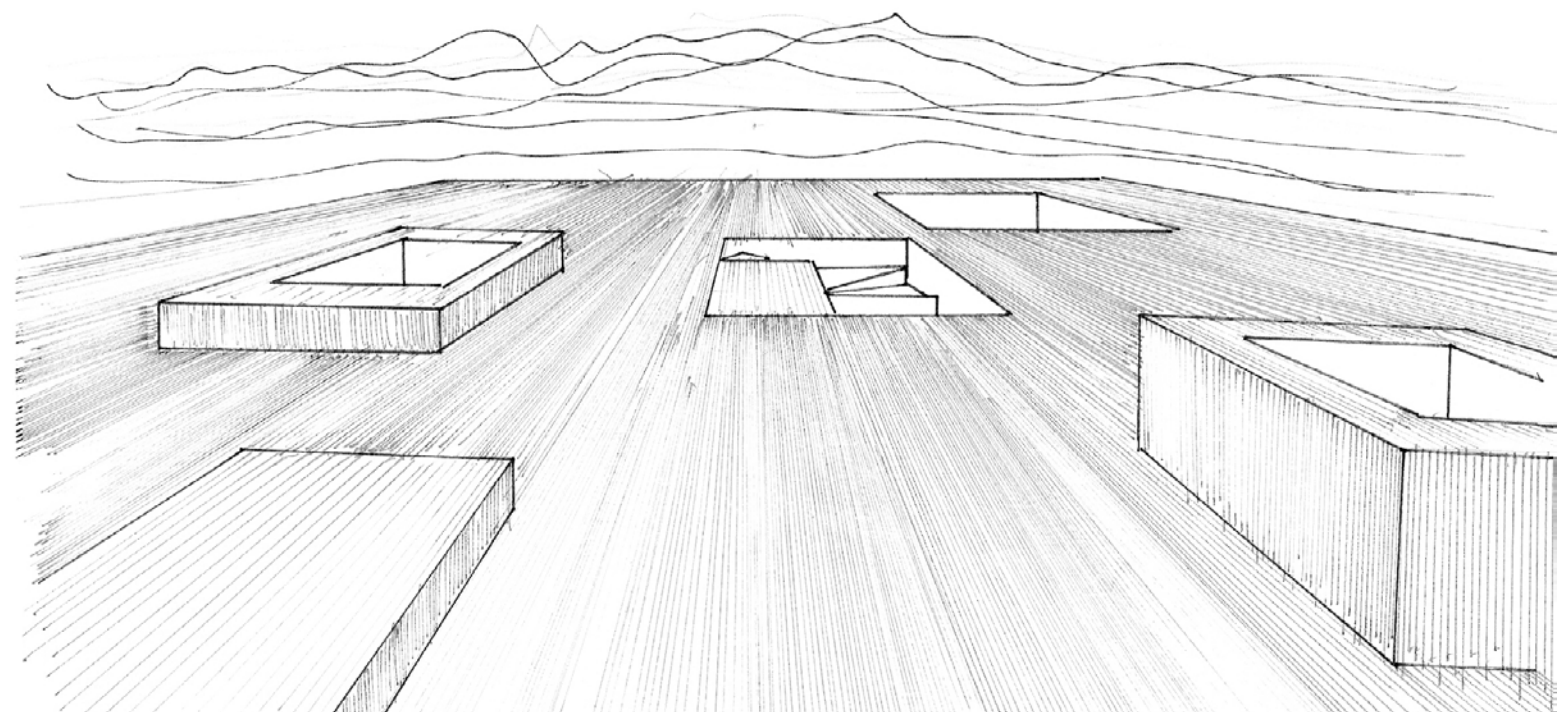
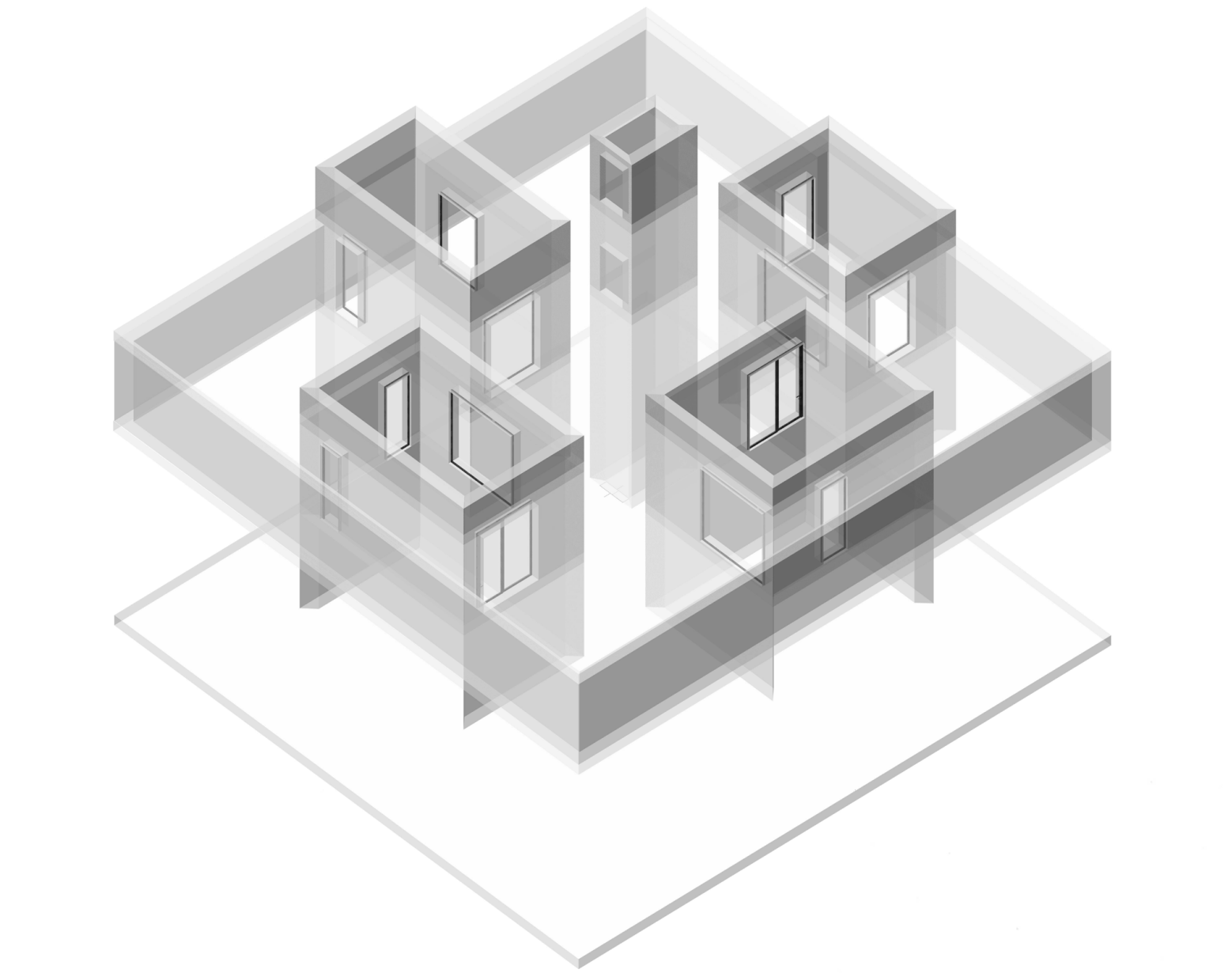
INTERPRETATION CENTER, CREUX-DU-VAN

The main Idea of the project is to relate the Creux du Van with the greater context.

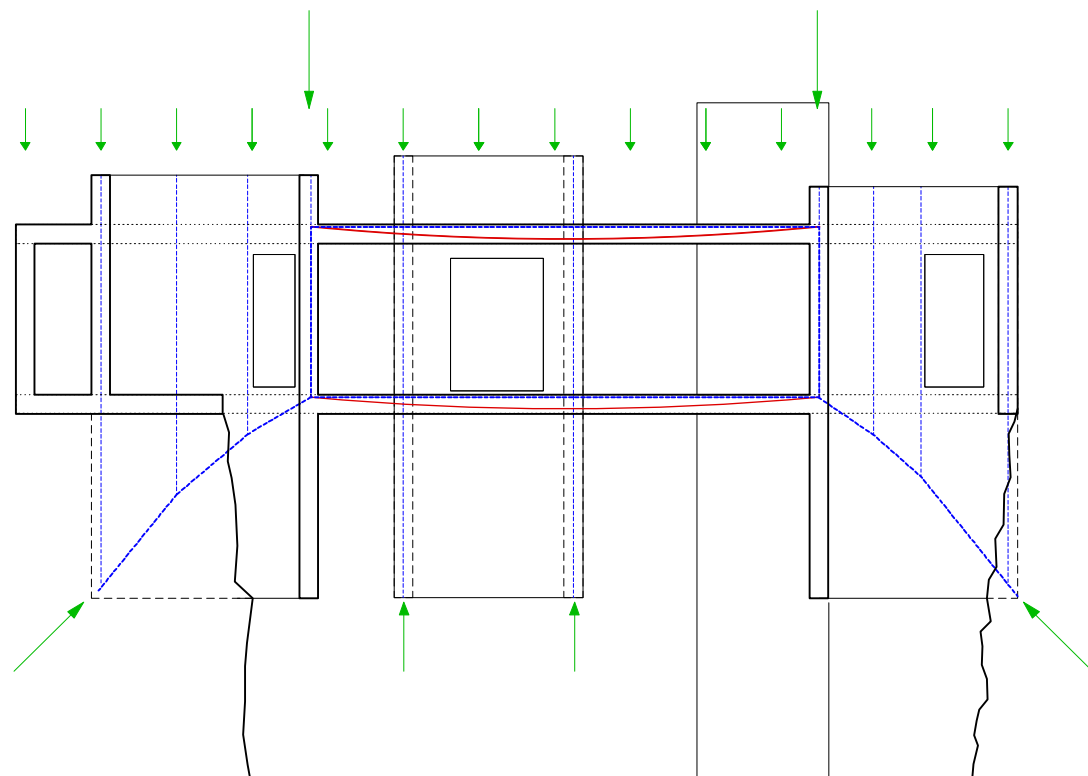
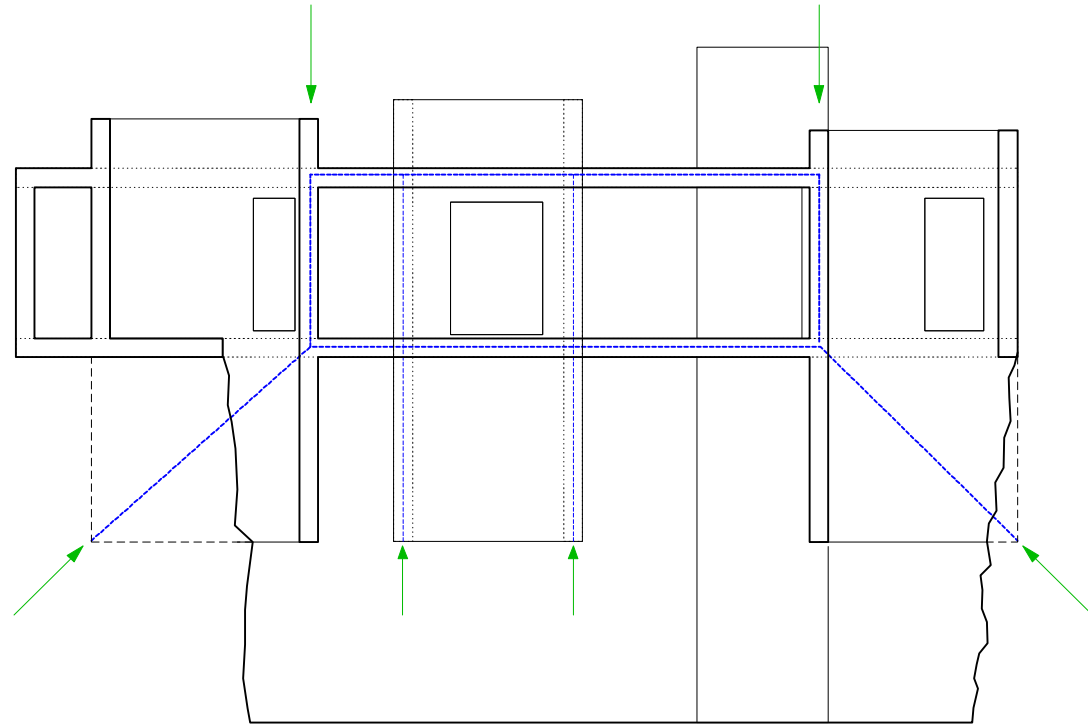
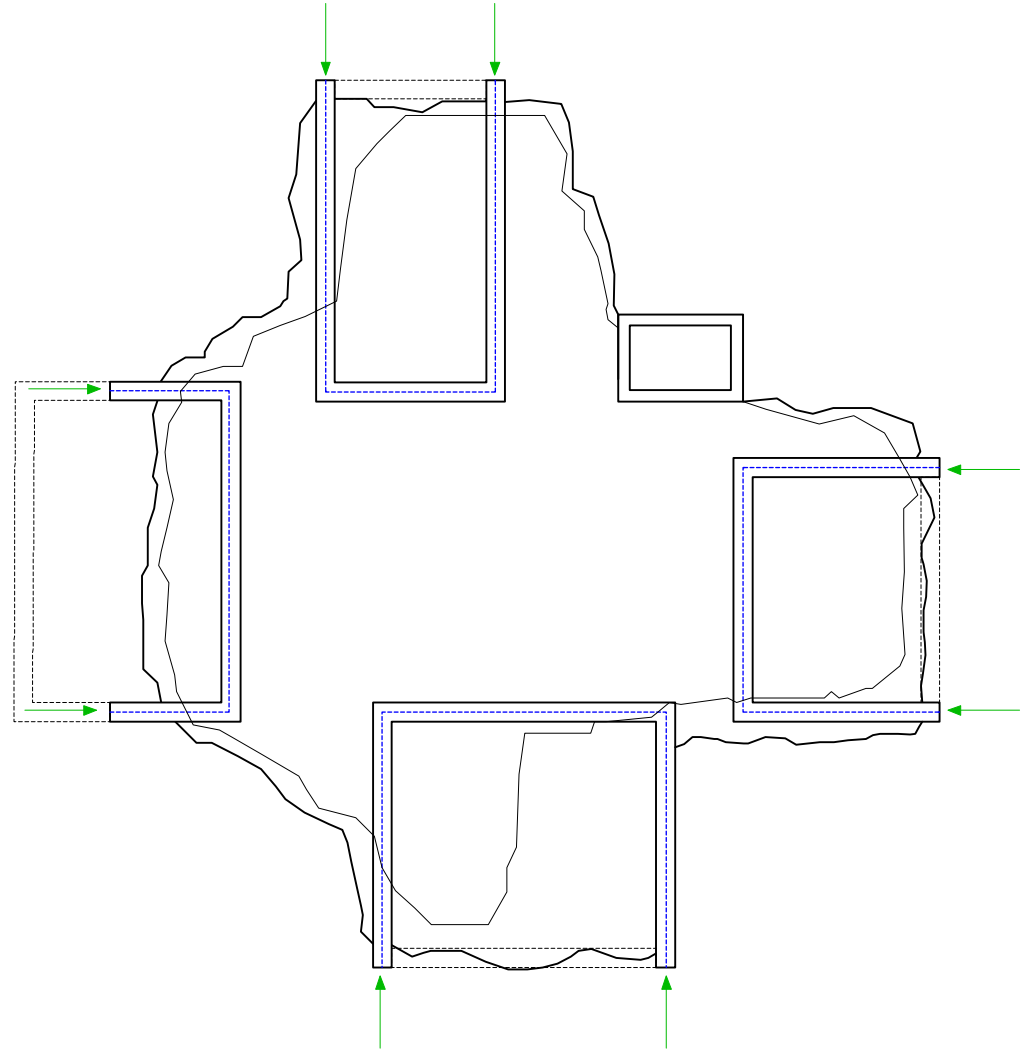
In order to perceive this abovementioned context, the top hill as an exposed site is chosen, where it isn't only possible to see the nearer surrounding landscape but the farer references, too. There, the interface between (touchable) earth and (visible) context should be expressed in an architectural way.

Forming the Creux-du-Van with their remote push during the last Alpine fold 2 - 10 million years ago, the Alps are strongly related to our topic and represent an important element of the geological and historical background, what is significant for the building's alignment.

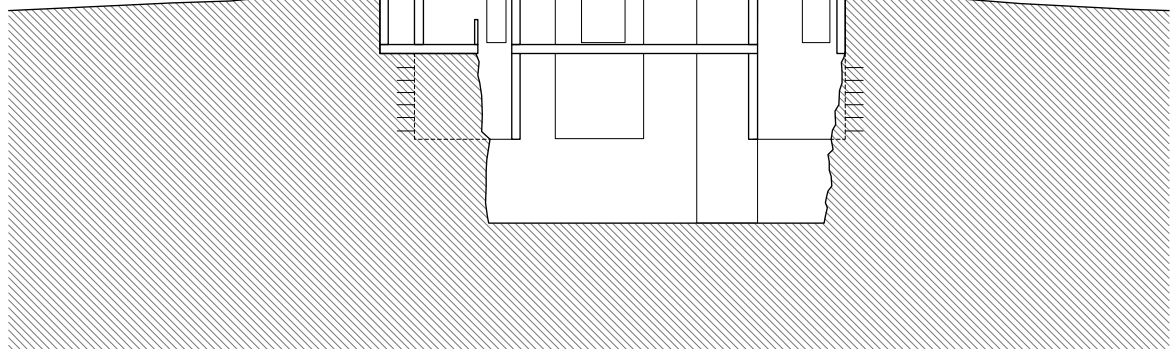
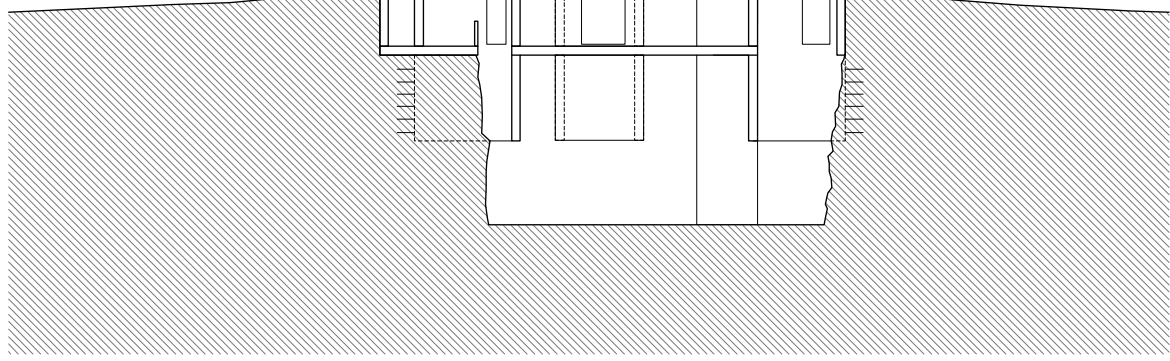
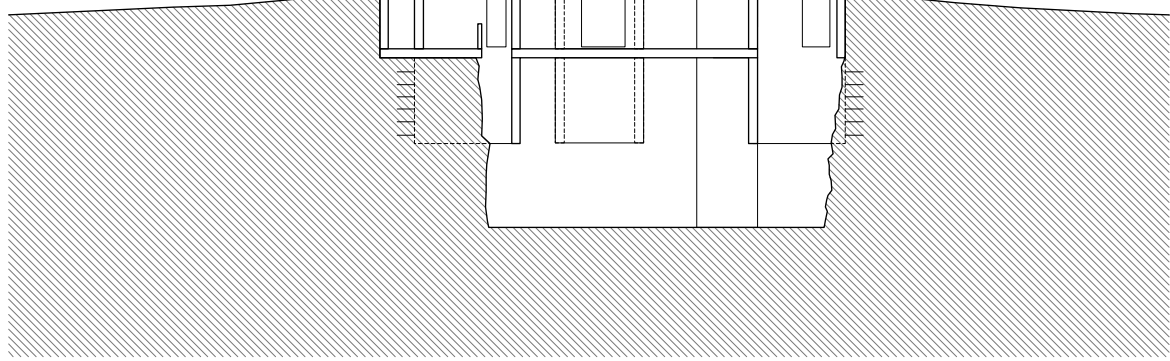
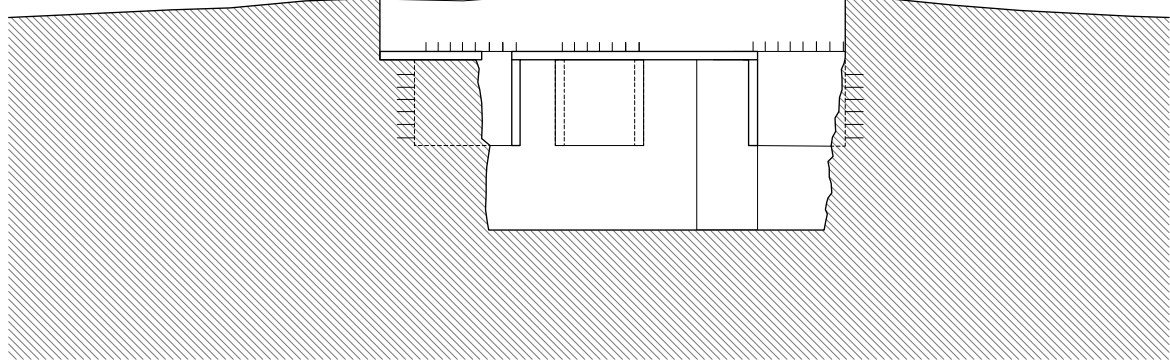
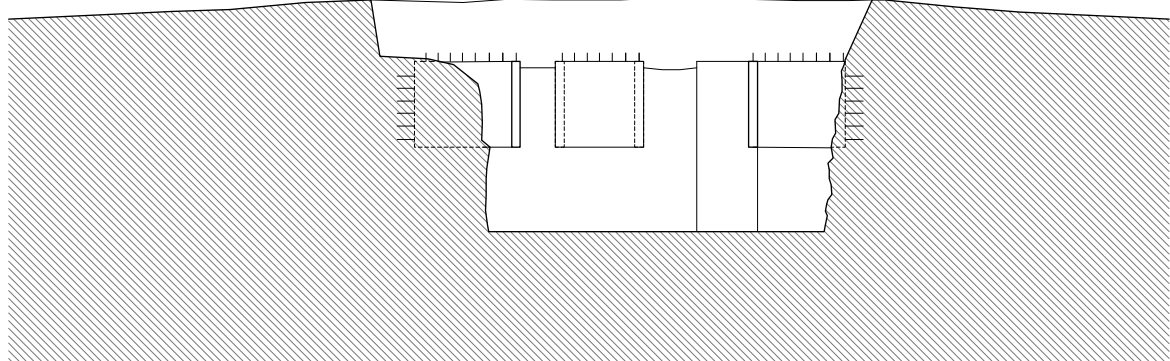
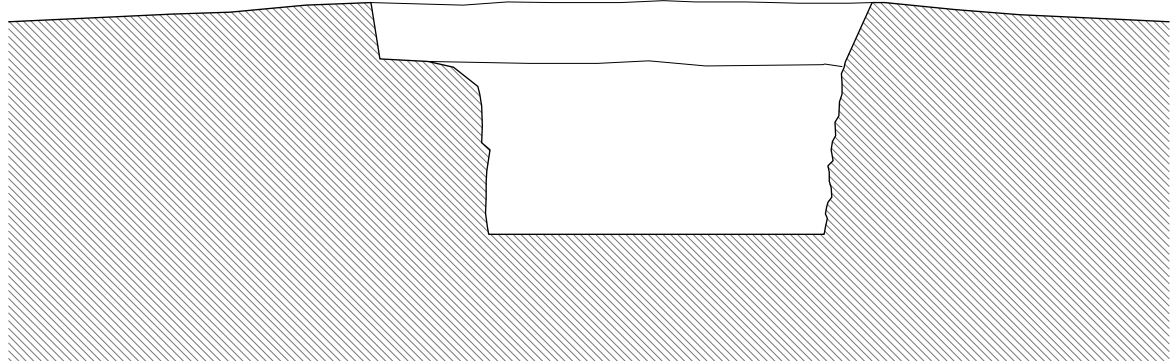
Connecting context and history to the earth, three specific spaces become important: the platform on the top aligned to the Alps, the earth-space as an artificial cave and the accessible foundation as the space between, with a resulting expression of a functional platform with an accessible basement. Using a skylight-slot-system, which generates three layers with three varied light- and room-situations, the gradual descent from the context into the earth is being orchestrated.



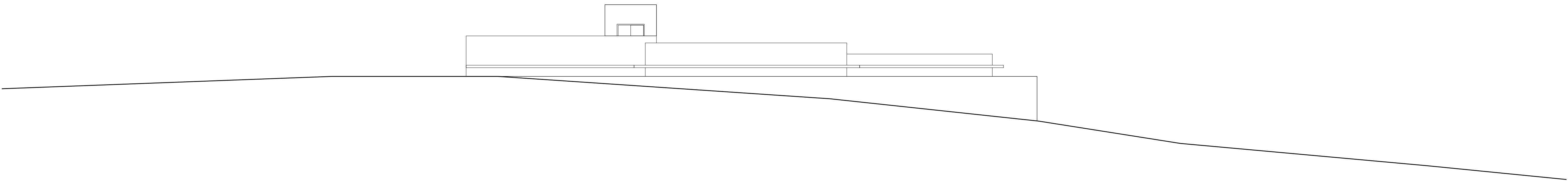
Concept Sketches



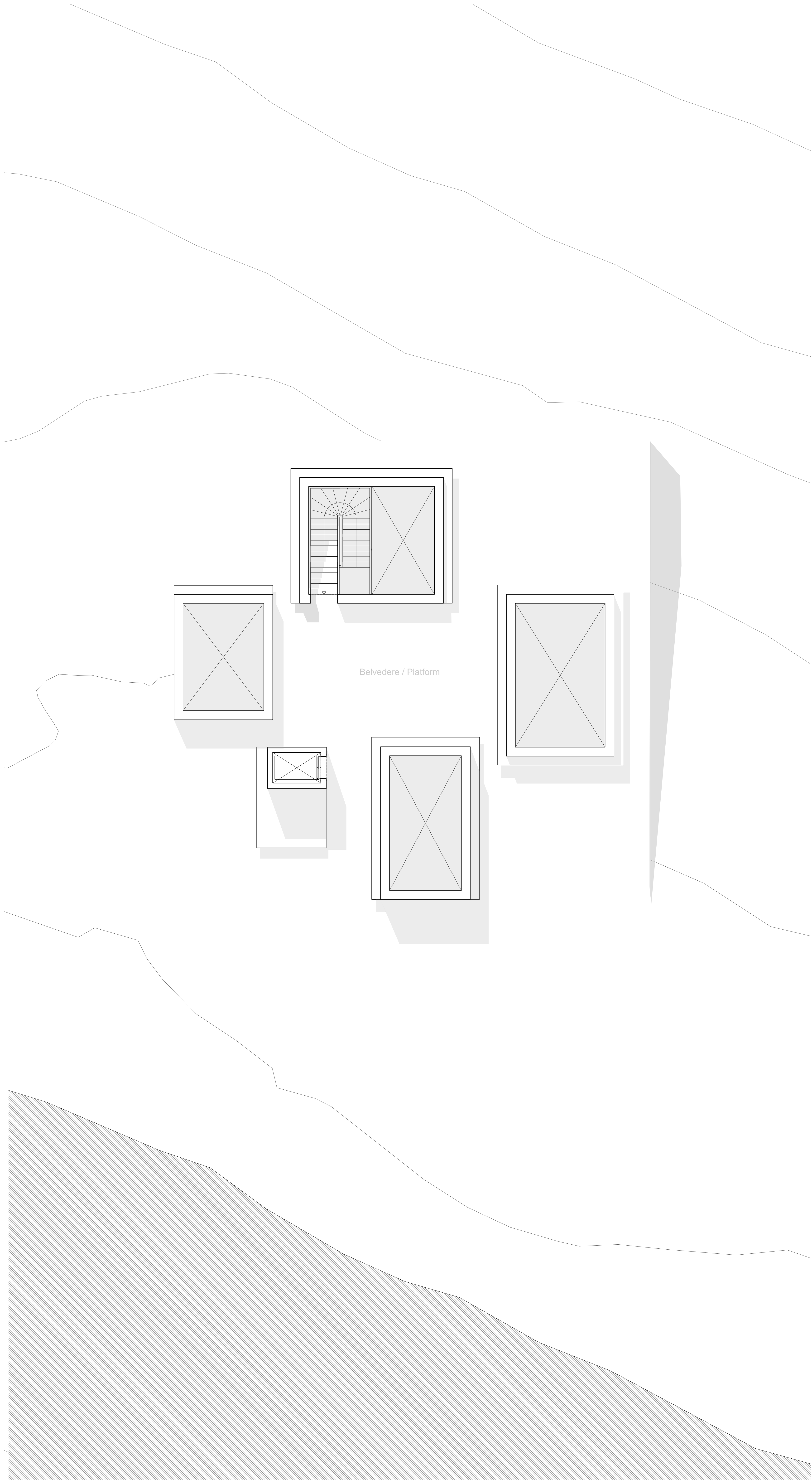
Static System

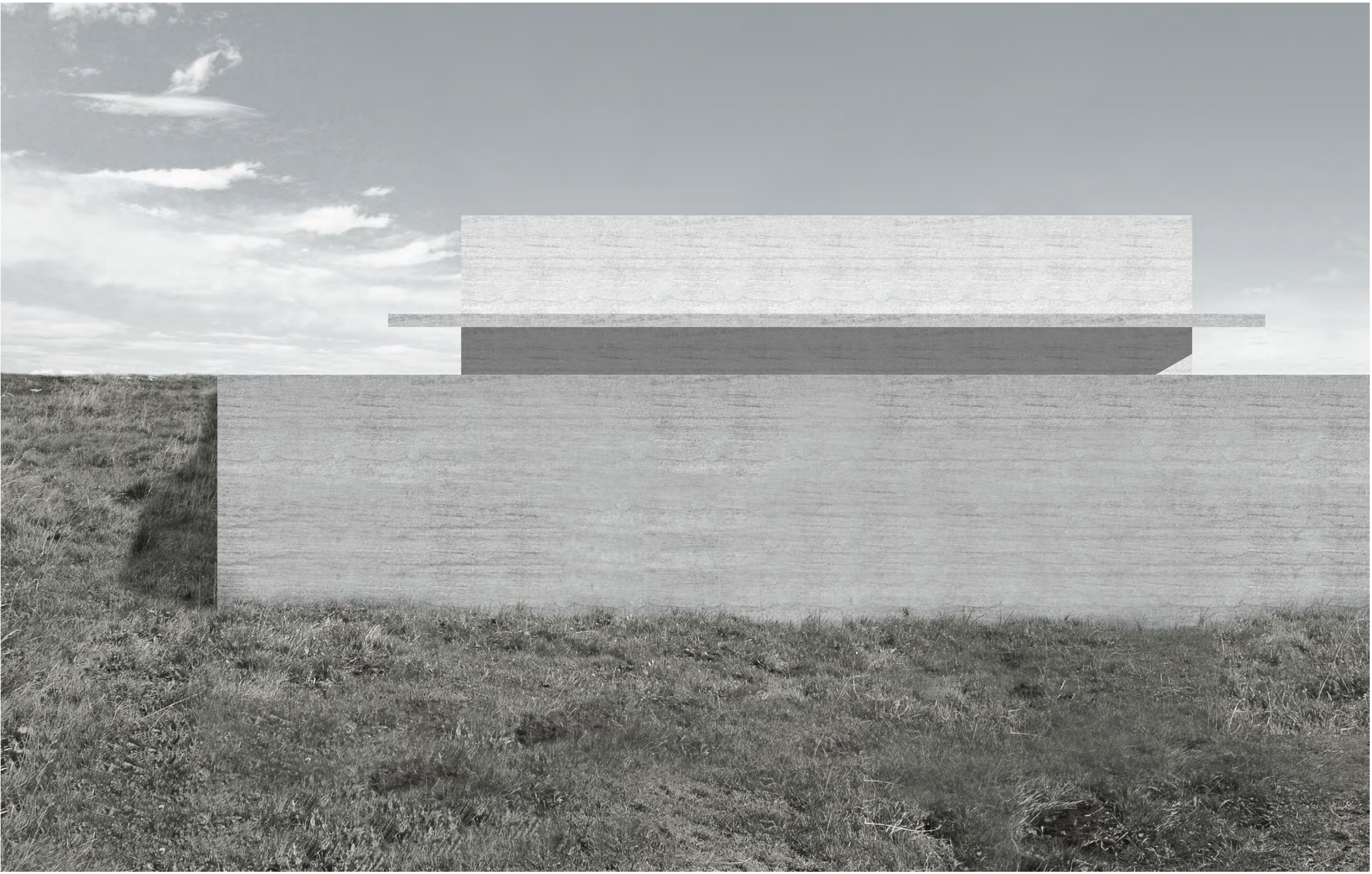
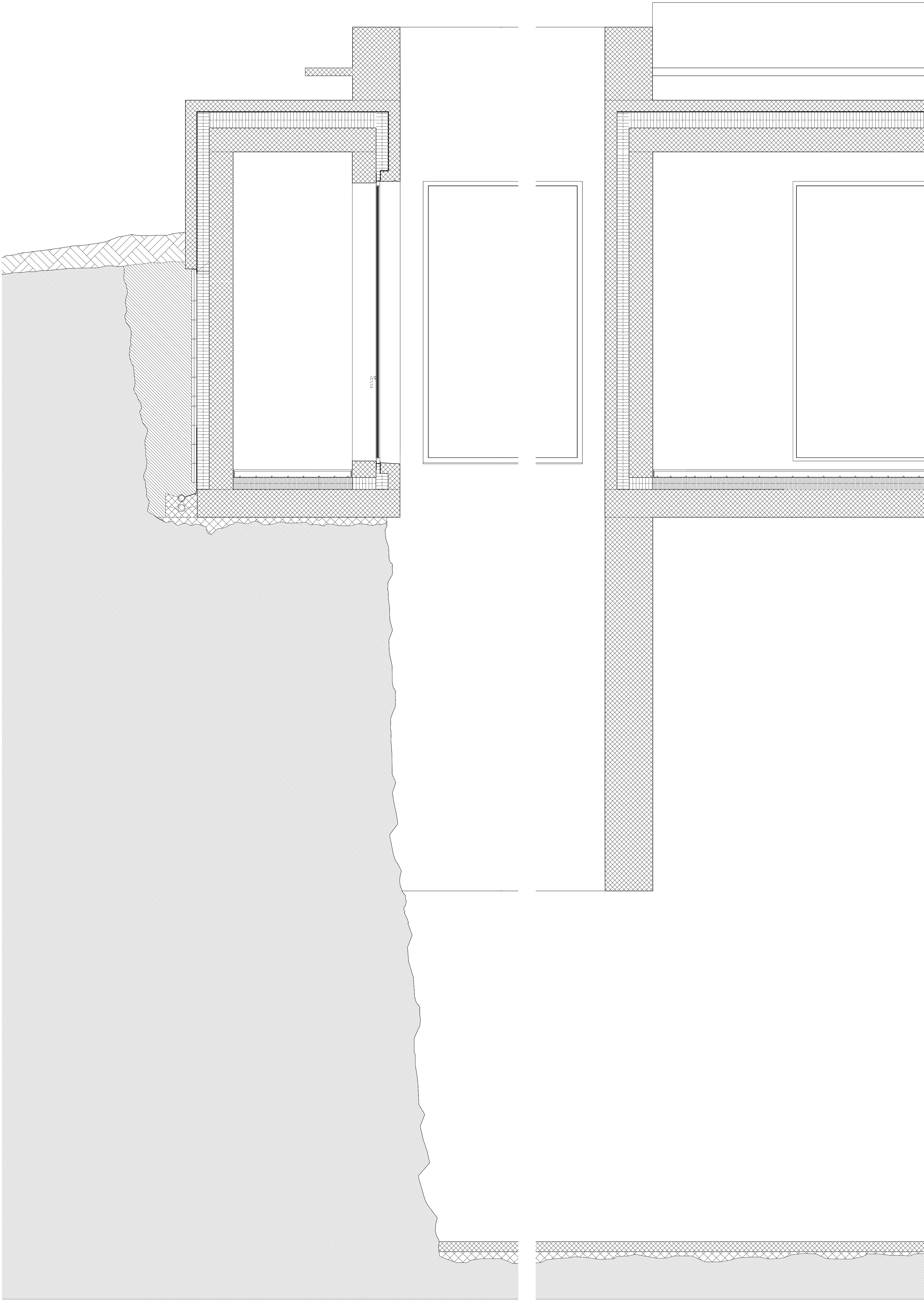


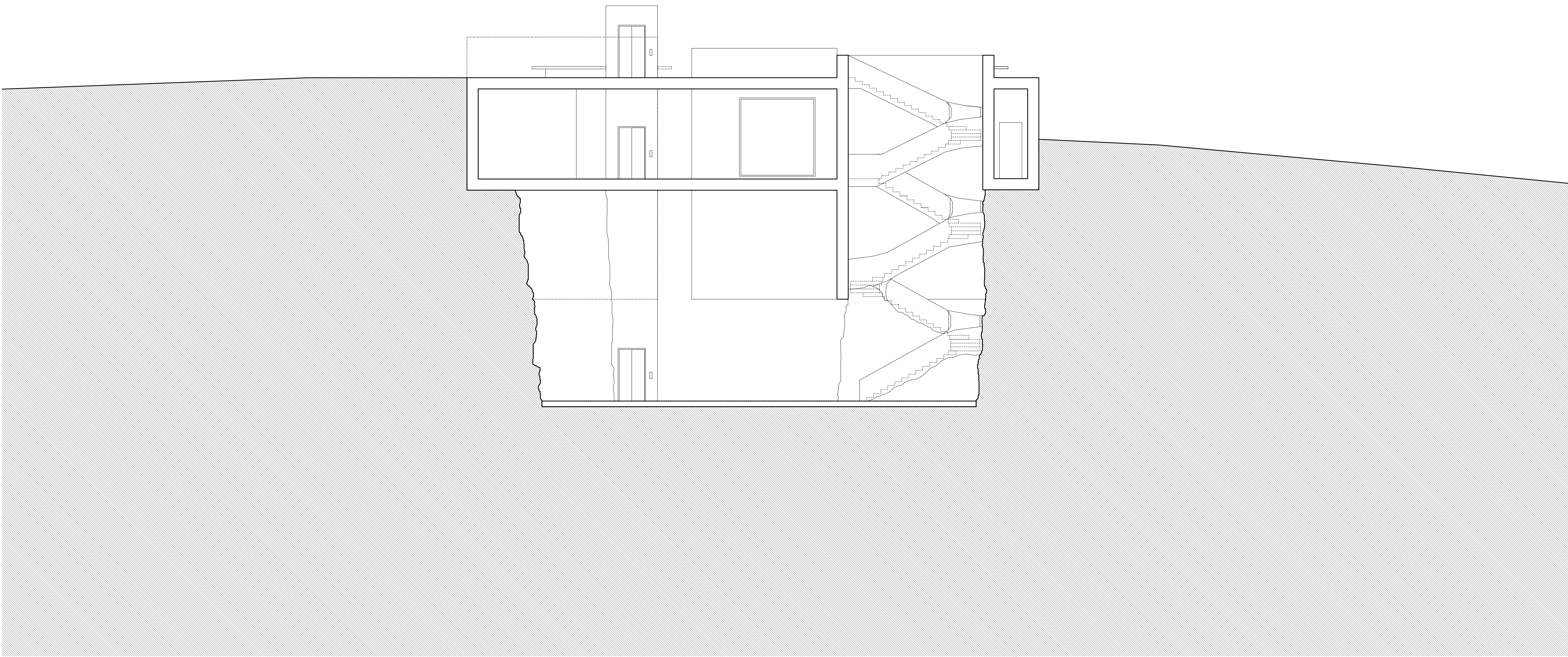
Building Phases
Platform. 1:100



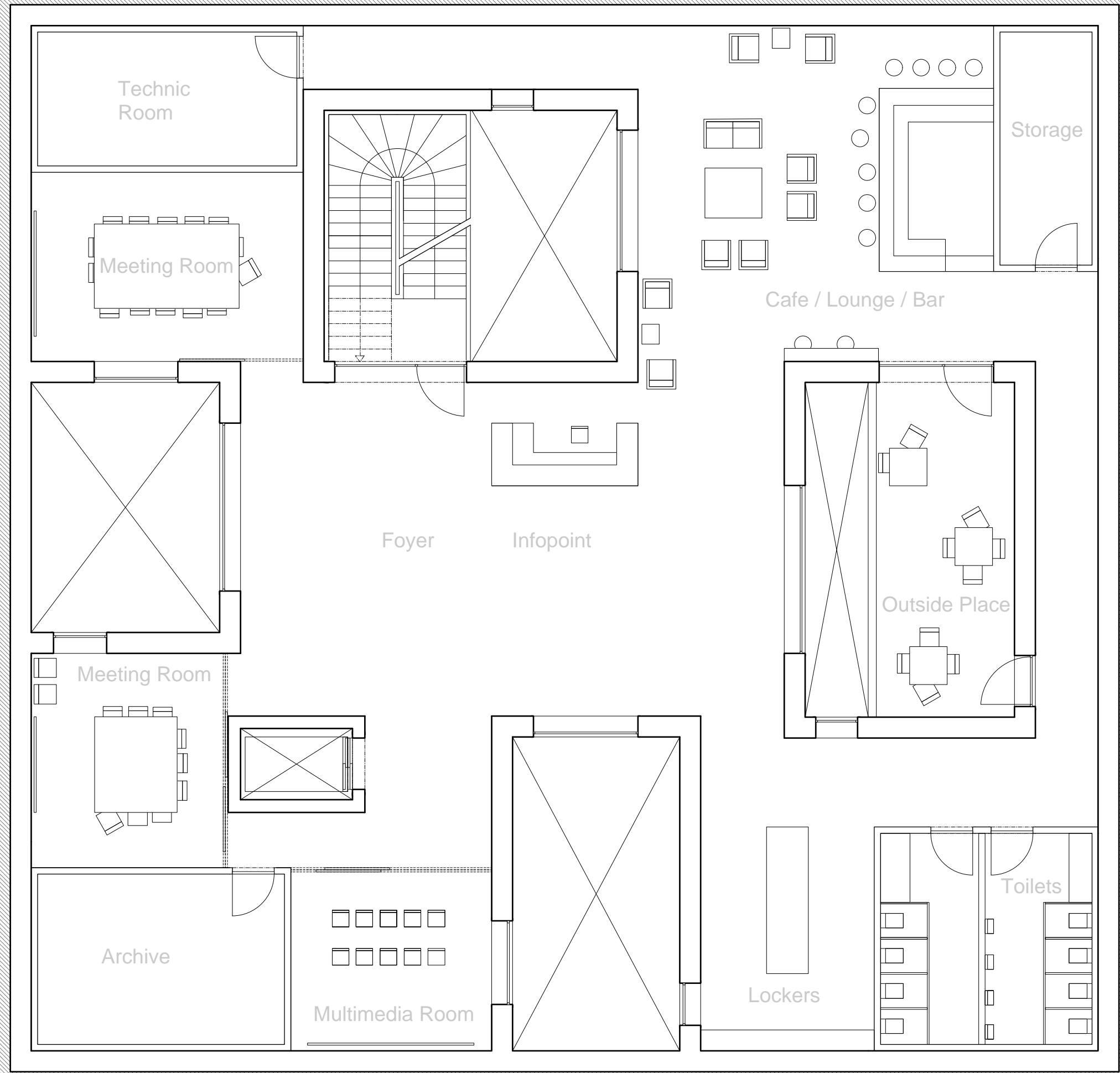
Facade. 1:100



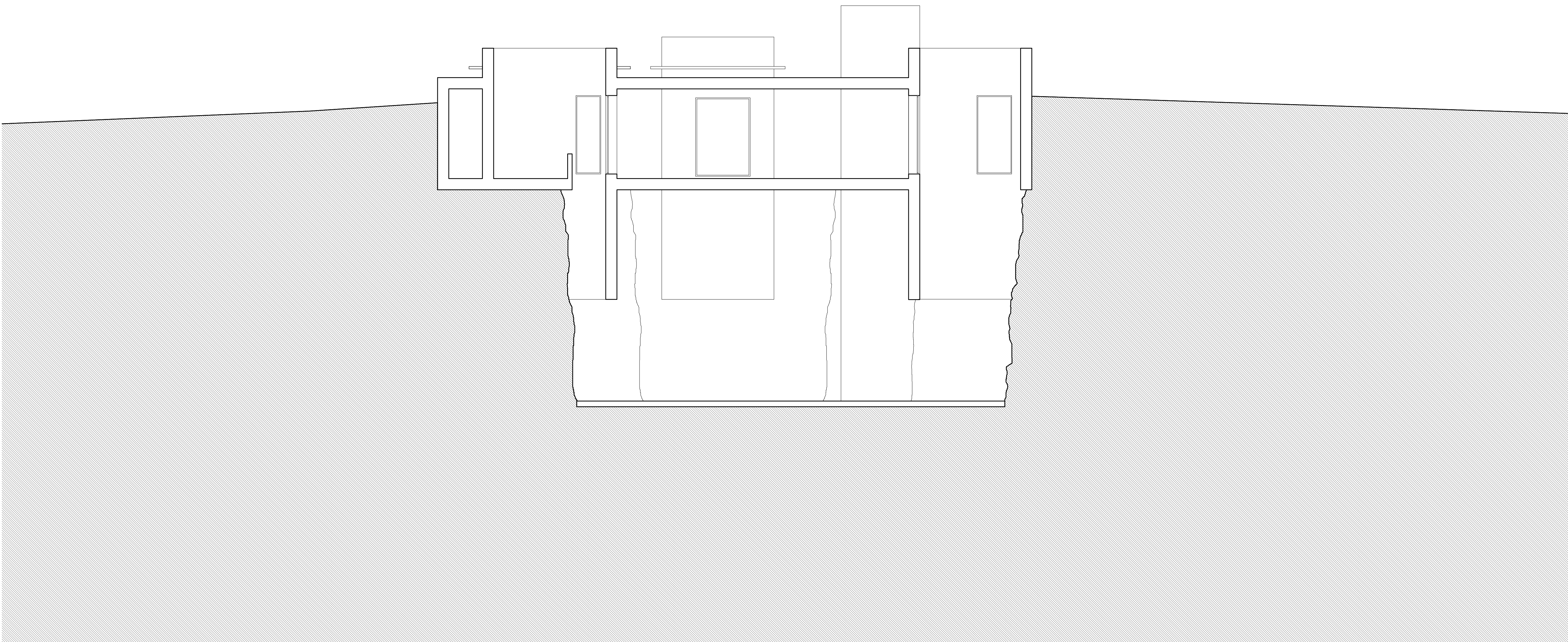




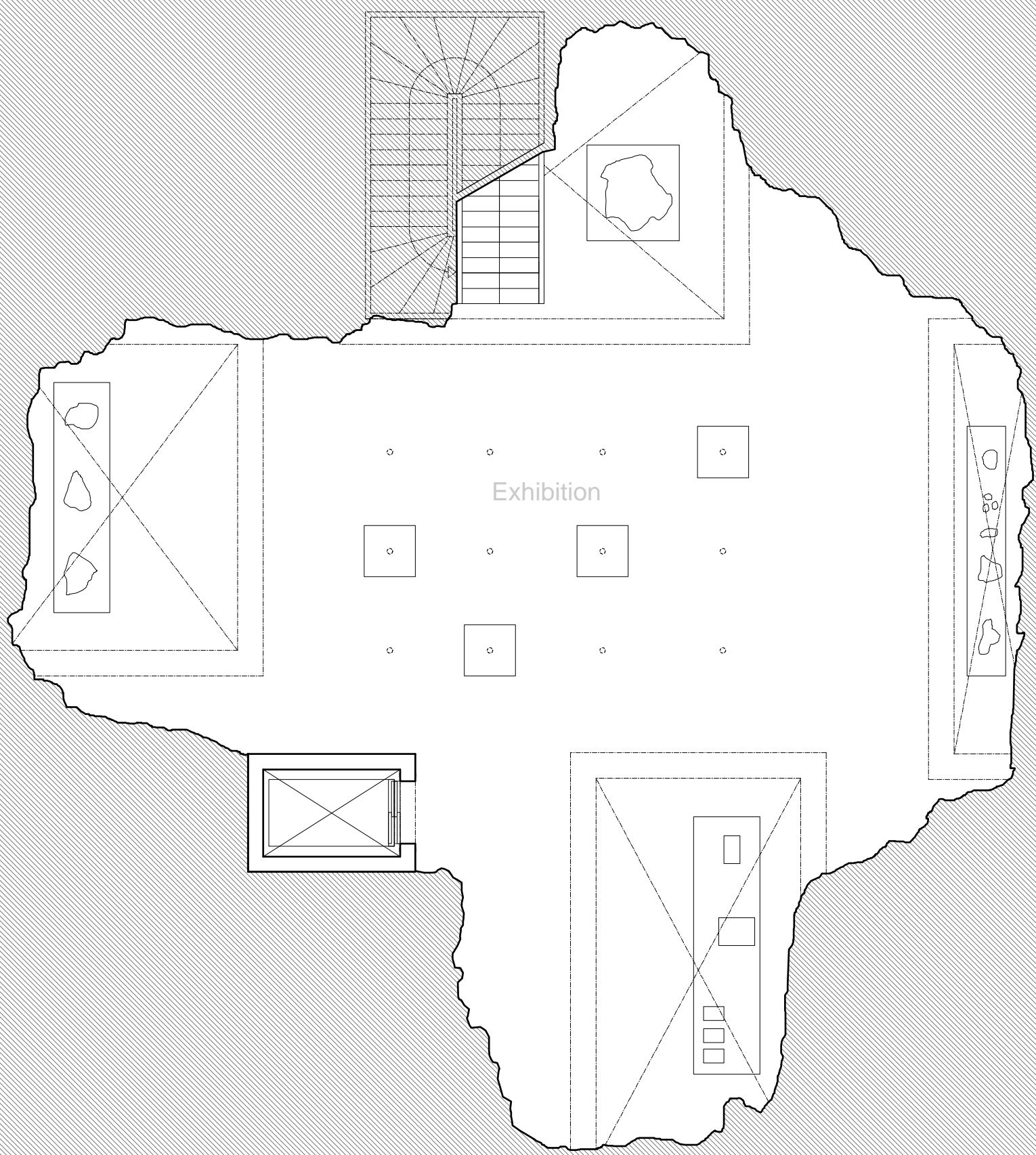
Section, 1:100



1st Floor Plan, 1:100



Section, 1:100



2nd Floor Plan, 1:100