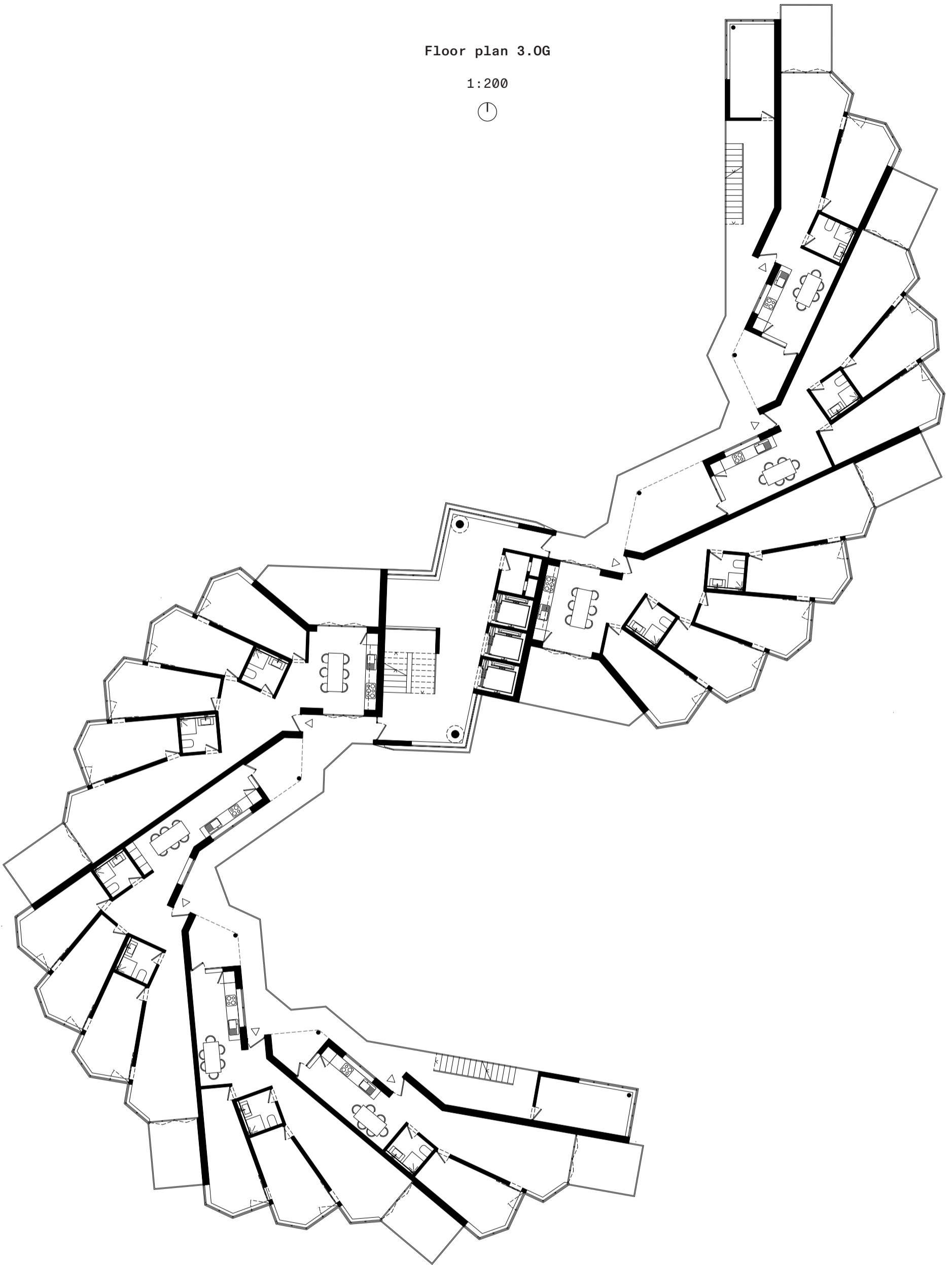


Floor plan 3.0G

1:200



Data

Gross floor area (GFA): 778,5m<sup>2</sup>

Net floor area (NFA): 650,8m<sup>2</sup>

NFA/GFA: 84%

App. Typ	NFA	App. Typ	NFA
5.5	110.3m <sup>2</sup>	3.5	71m <sup>2</sup>
4.5	95m <sup>2</sup>	3.5	68m <sup>2</sup>

New apartment type 01 & 02

1:100



Data

Apartment type A, B: 5.5, 4.5

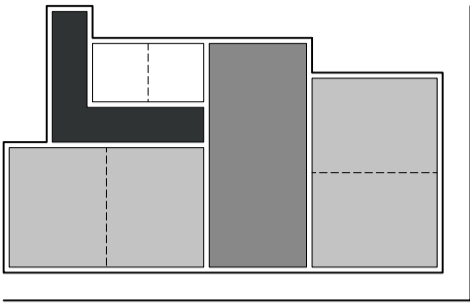
# Persons = # Rooms - 1 = 4P, 3P

Net floor area (NFA): 110.3m<sup>2</sup>, 95m<sup>2</sup>

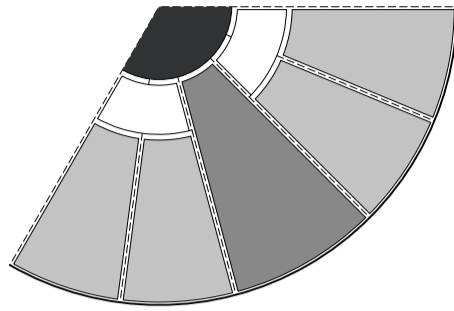
NFA per person: 27.6m<sup>2</sup>, 31.7m<sup>2</sup>

# Typological transformation

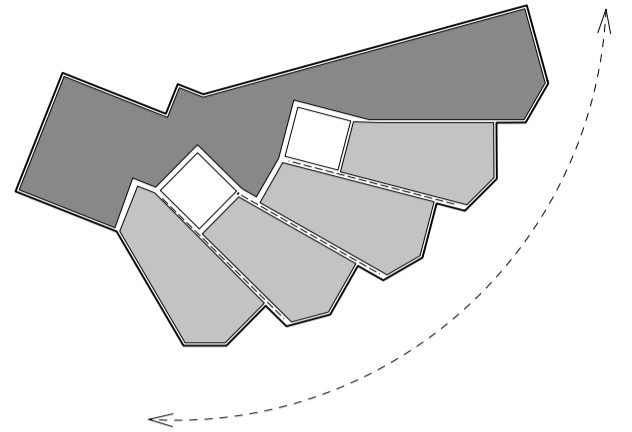
Geometric strategy for double sun exposure in all private rooms & cross ventilation & illumination of collective spaces.



Actual: Corner typology

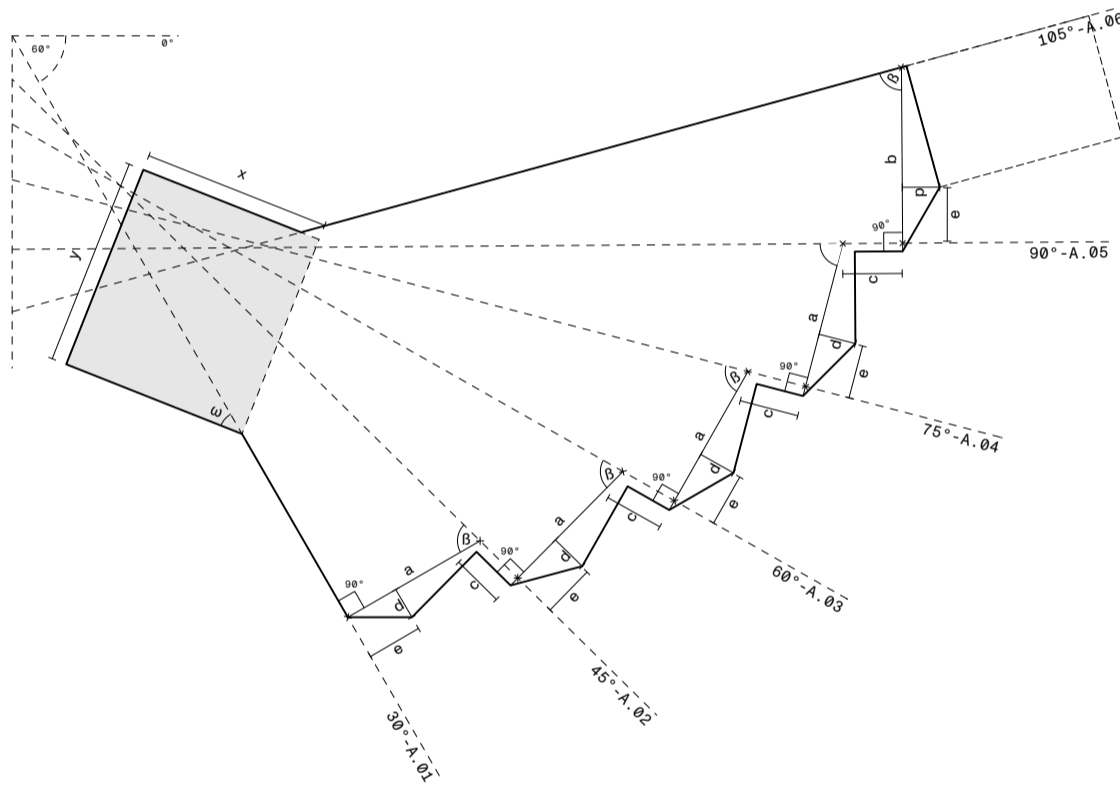


Minimization of corridor  
Maximization of light exposure

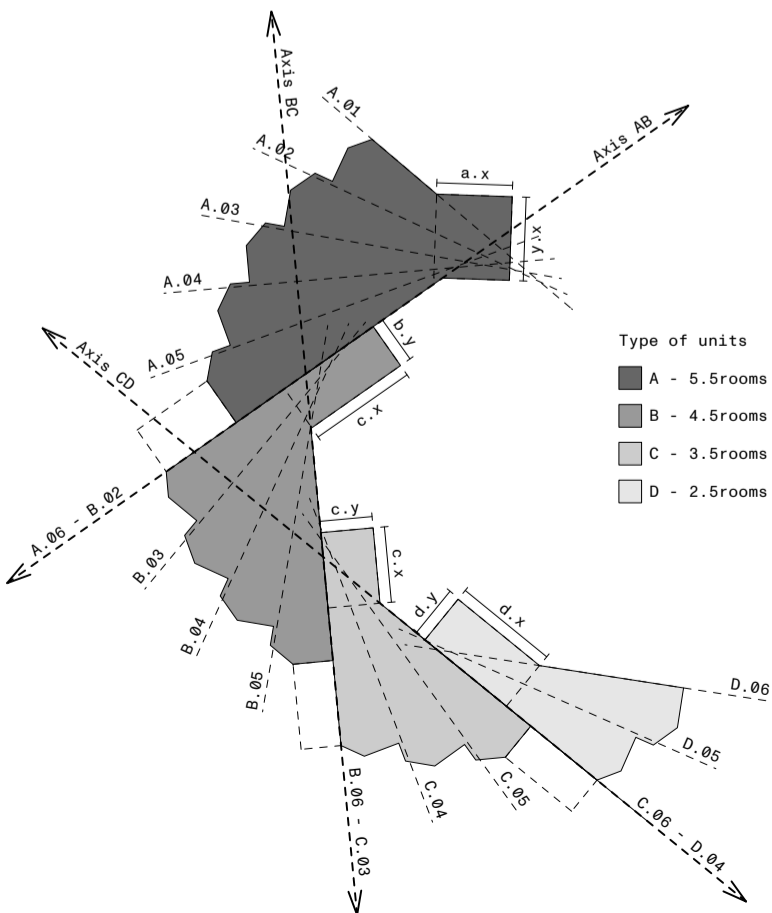


Maximization of collective space  
Elimination of corridor

## Geometric scheme of the unit A - 5.5 Rooms



## Assamble of apartments



## Layers of society

