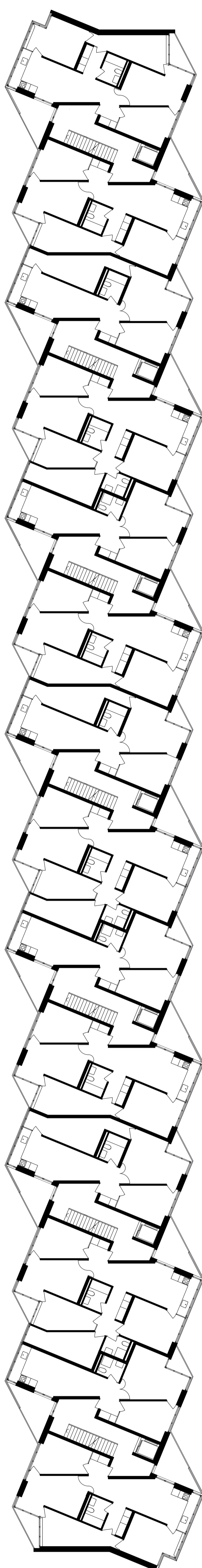


Typical floor plan

1:200



Data

Gross floor area (GFA): 1'539m<sup>2</sup>

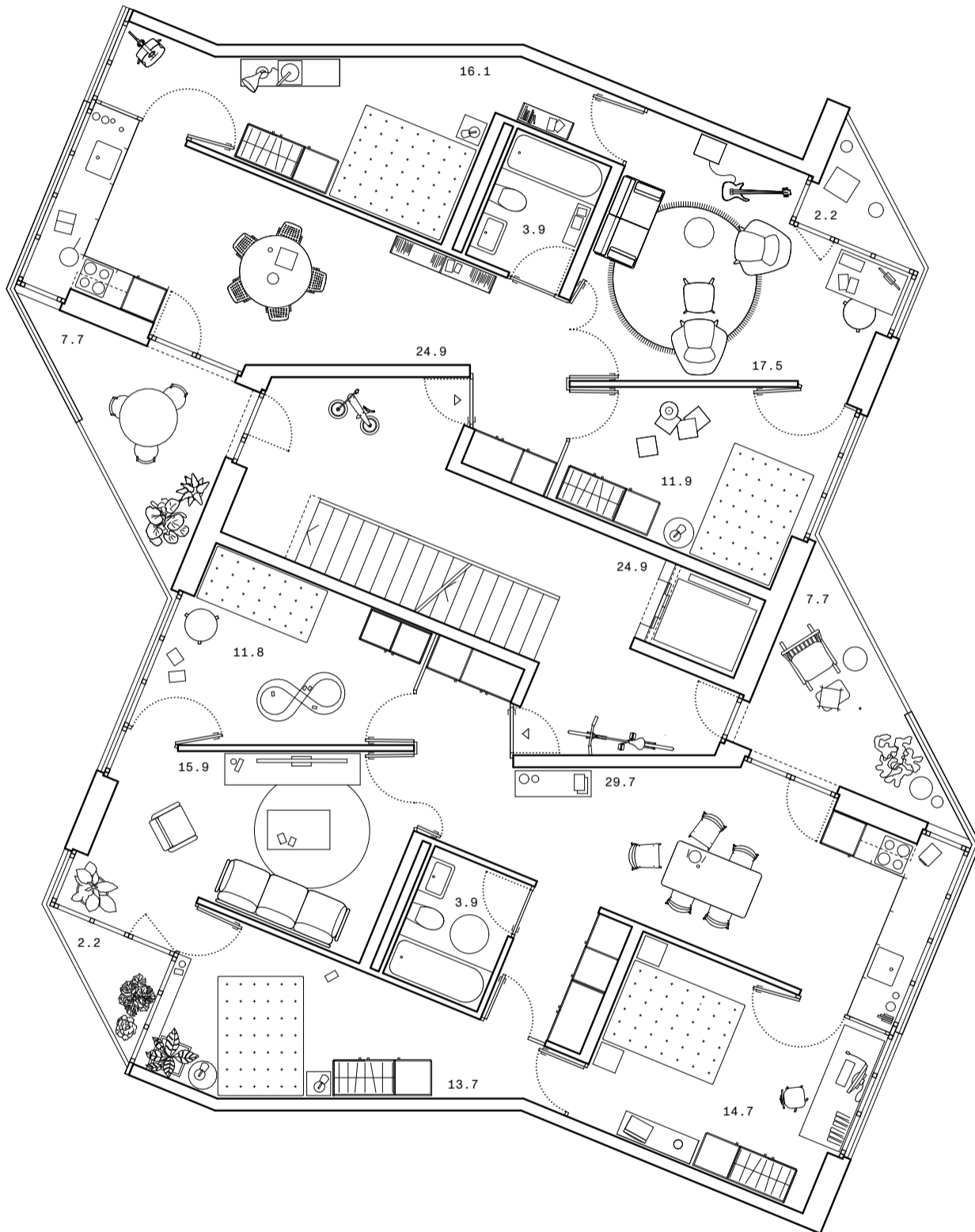
Net floor area (NFA): 1'192m<sup>2</sup>

NFA/GFA: 77%

| App. Typ | NFA                 |
|----------|---------------------|
| 5.5      | 106.3m <sup>2</sup> |
| 4.5      | 89.7m <sup>2</sup>  |
| 3.5      | 74.3m <sup>2</sup>  |
| 2.5      | 57.3m <sup>2</sup>  |

New apartment type

1:100



Data

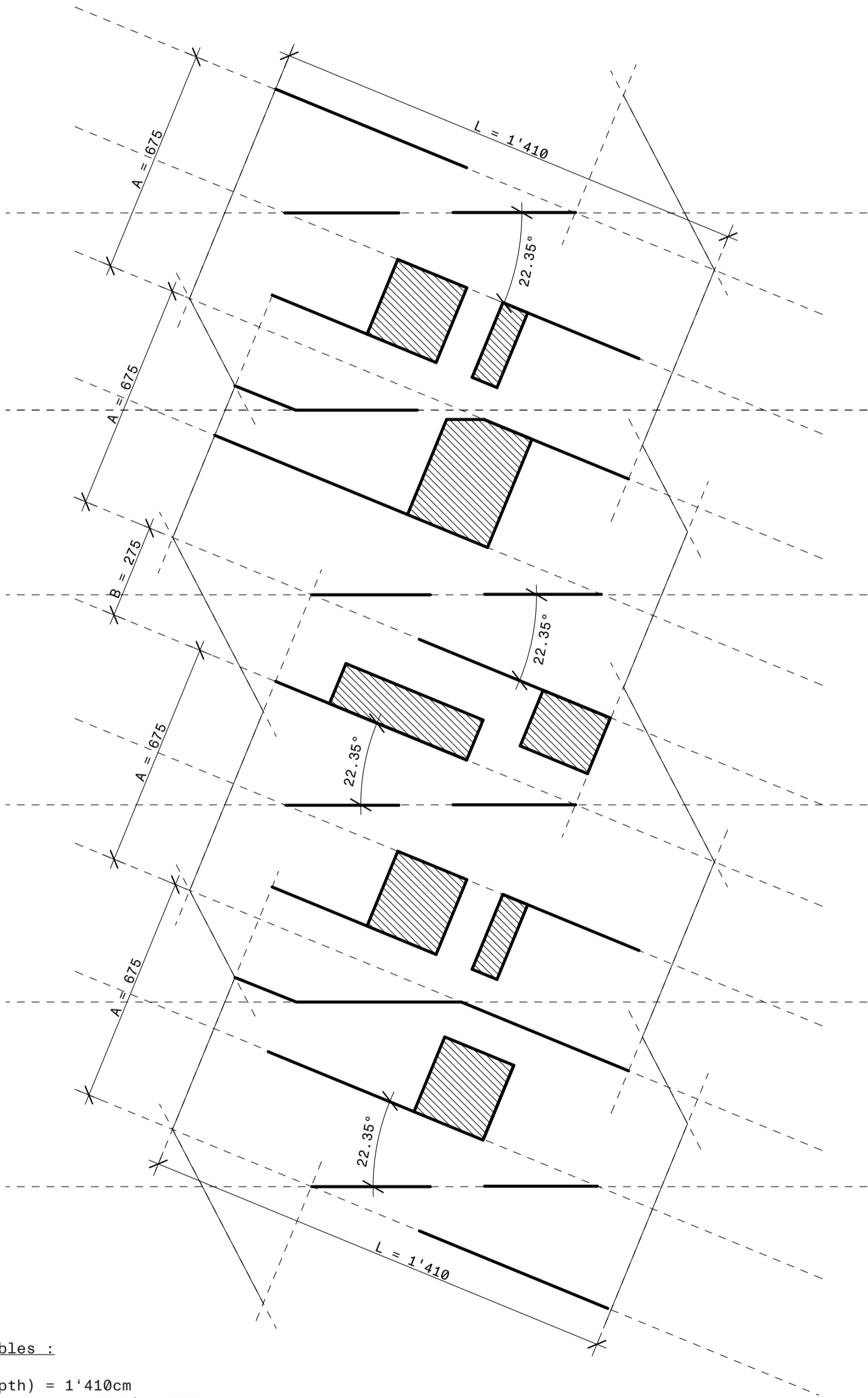
Apartment type: 3.5 | 4.5

# Persons = # Rooms - 1 = 2P | 3P

Net floor area (NFA): 74.3m<sup>2</sup> | 89.7m<sup>2</sup>

NFA per person: 37.15m<sup>2</sup> | 29.9m<sup>2</sup>

Concept diagram



Variables :

$L$  (depth) = 1'410cm  
 $A$  (apartments width) = 675cm  
 $B$  (staircase width) = 275cm  
Angle =  $22.35^\circ$