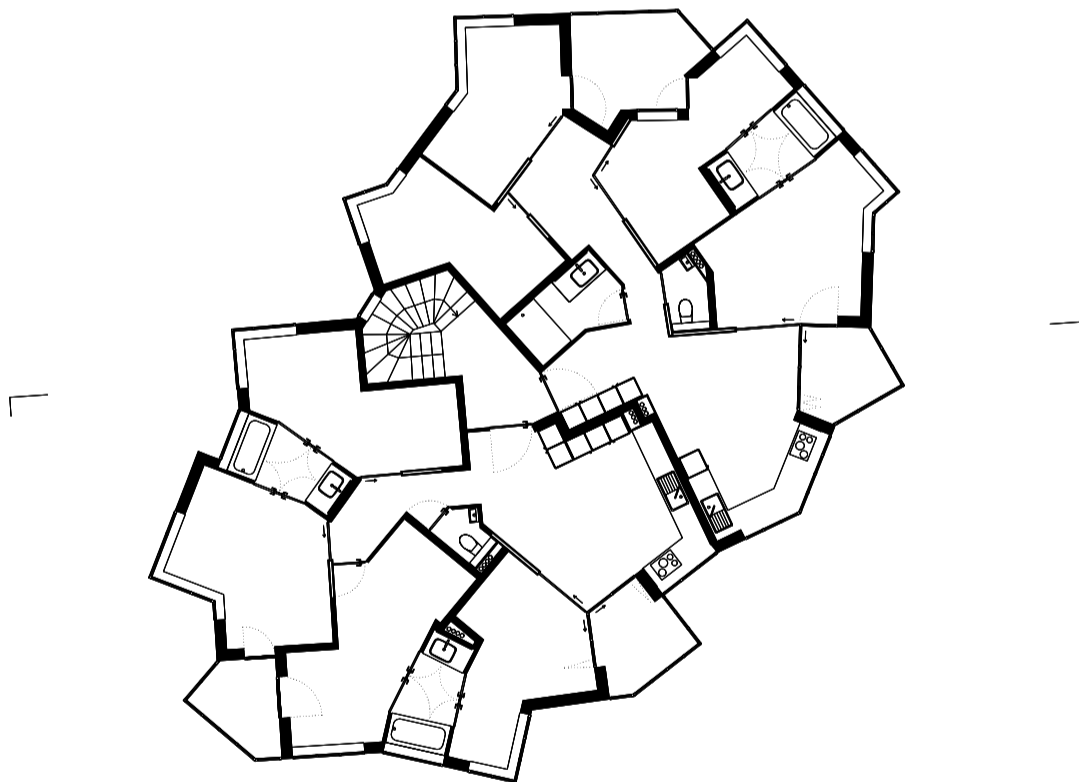
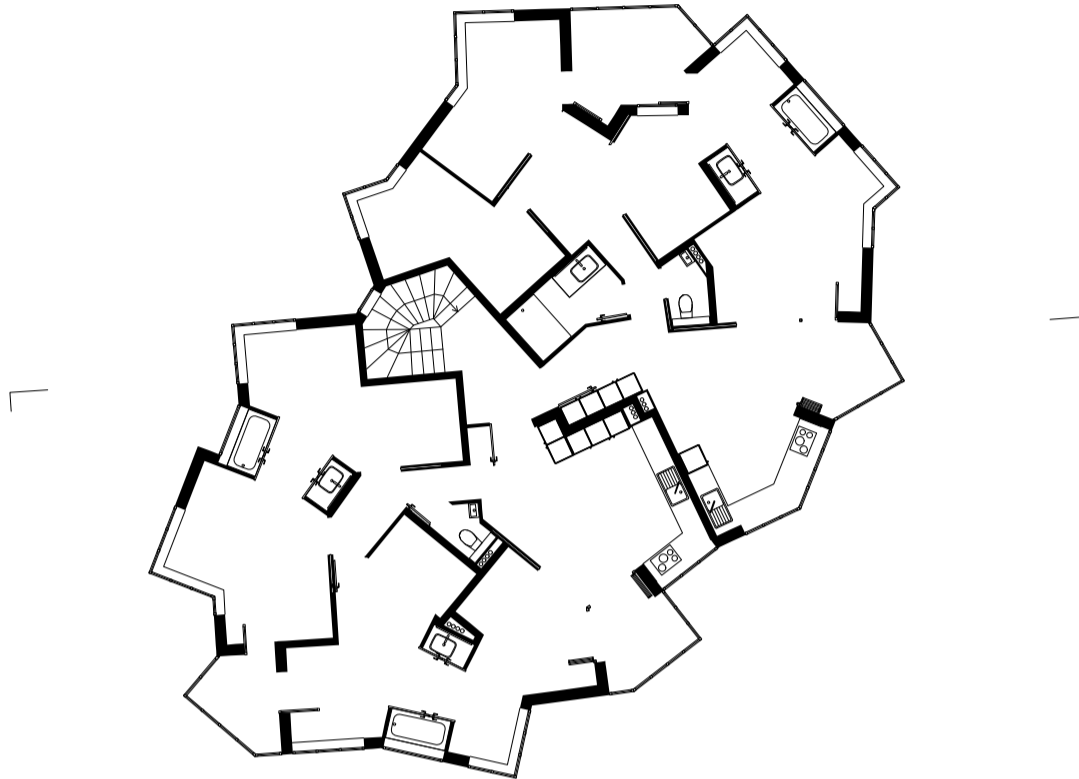


Typical floor plan

1:200



Data

Gross floor area (GFA): 259m²

Net floor area (NFA): 190m²

NFA/GFA: 73%

App. Typ	NFA
4.5	95m ²
4.5	95m ²

New apartment type

1:100



Data

Apartment type: 4.5

Persons = # Rooms - 1 = 3P

Net floor area (NFA): 95m²

NFA per person: 31.7m²

New apartment type

1:100



Data

Apartment type: 4.5

Persons = # Rooms - 1 = 3P

Net floor area (NFA): 95m²

NFA per person: 31.7m²

