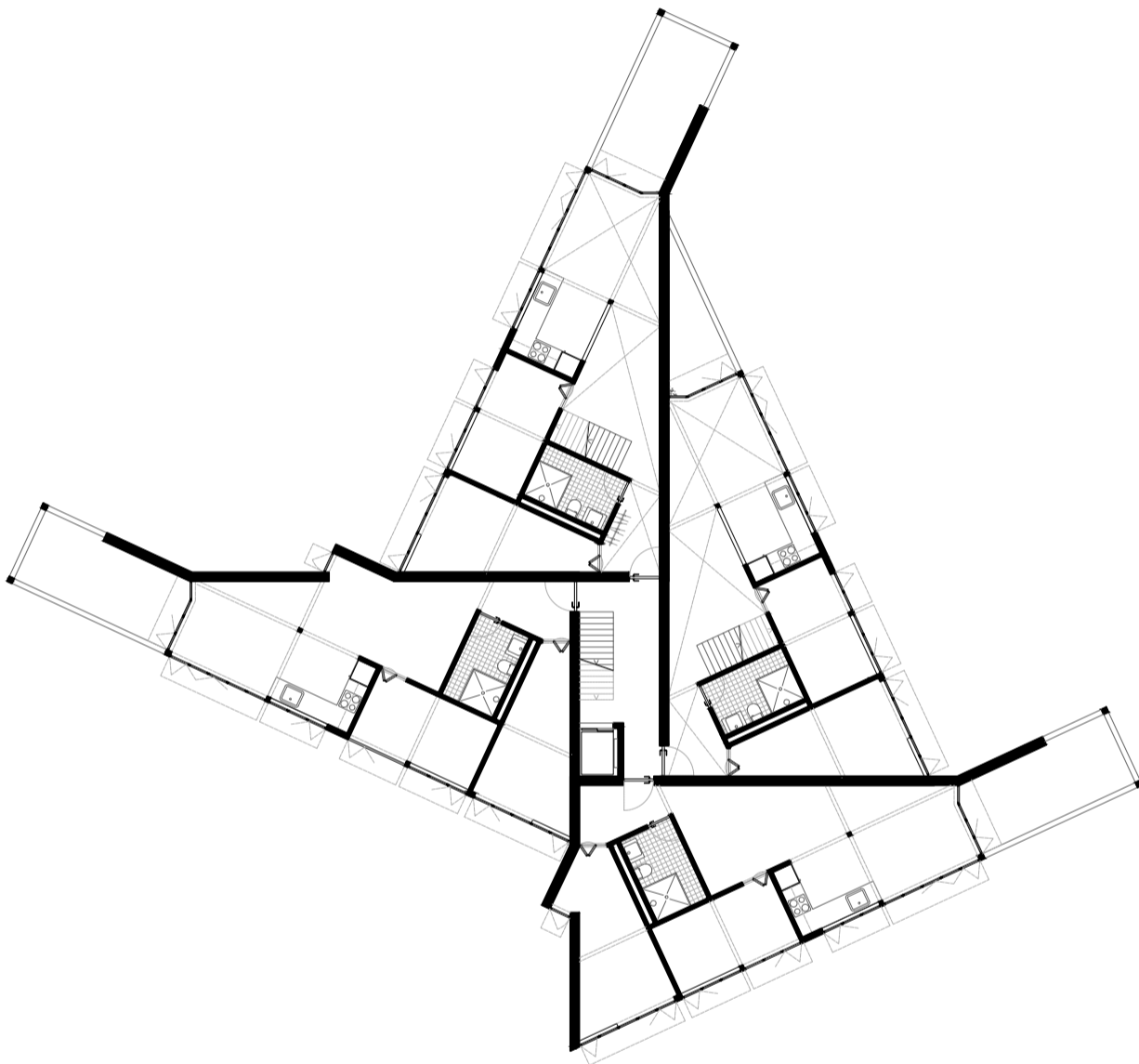


Typical floor plan

1:200



Data

Gross floor area (GFA): 222.5m²

Net floor area (NFA): 211.5m²

NFA/GFA: 95%

App. Typ	NFA	App. Typ	NFA
3.5	56m ²	Duplex	100m ²
2.5	55m ²		

New apartment type

1:100



Data

Apartment type: Duplex

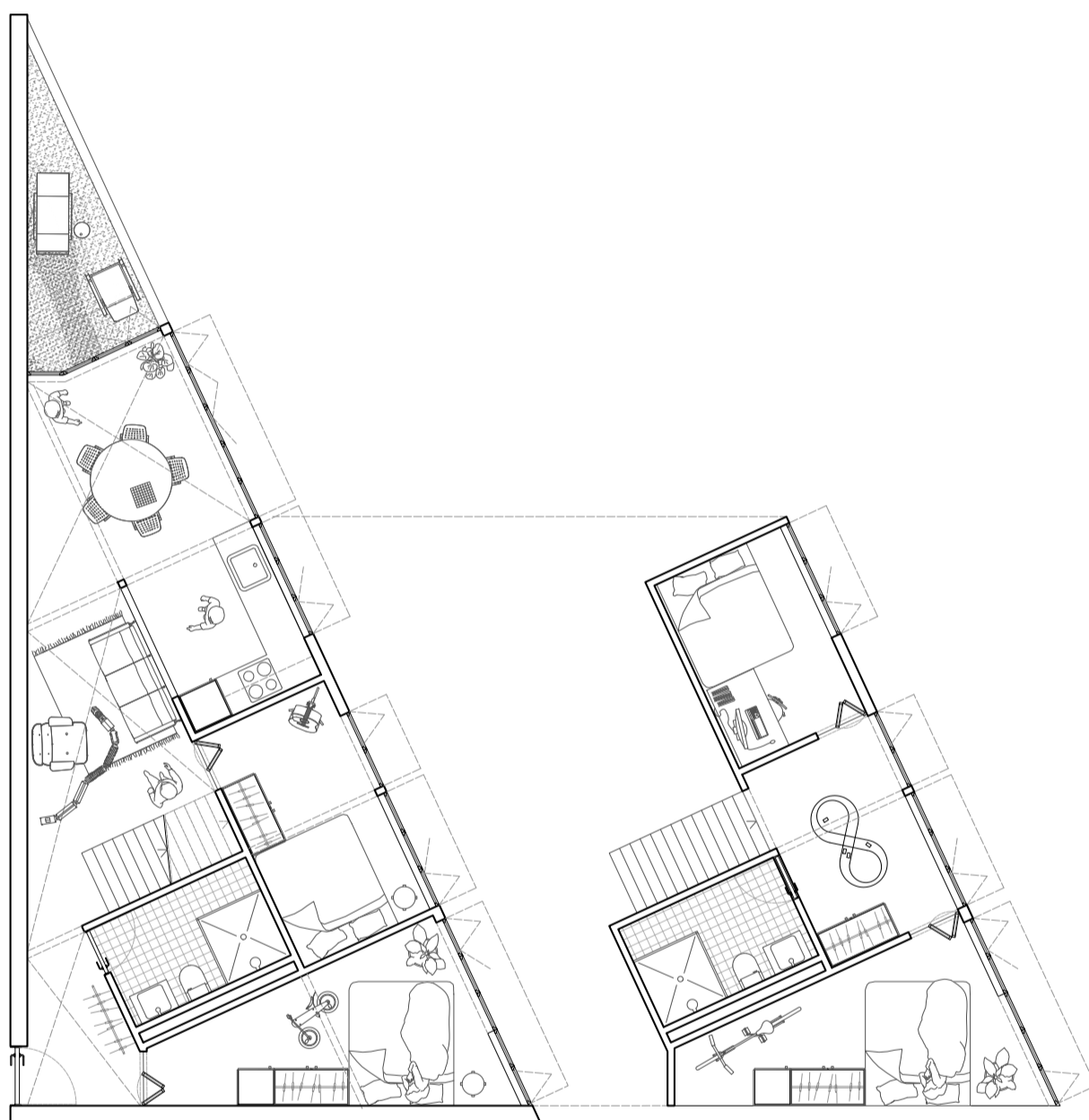
Persons = # Rooms - 1 = 3P

Net floor area (NFA): 77.5m²

NFA per person: 25.8m²

New apartment type

1:100



Data

Apartment type: Duplex

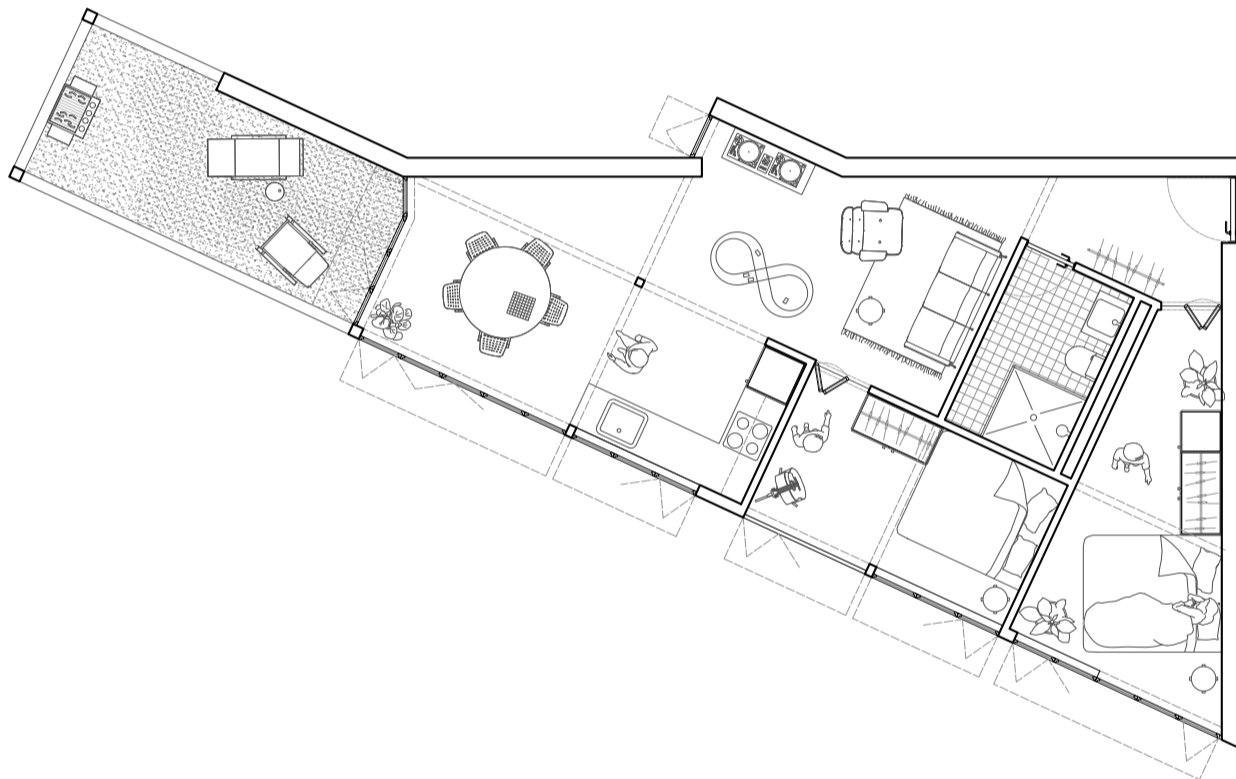
Persons = # Rooms - 1 = 3P

Net floor area (NFA): 77.5m²

NFA per person: 25.8m²

New apartment type

1:100



Data

Apartment type: 2.5

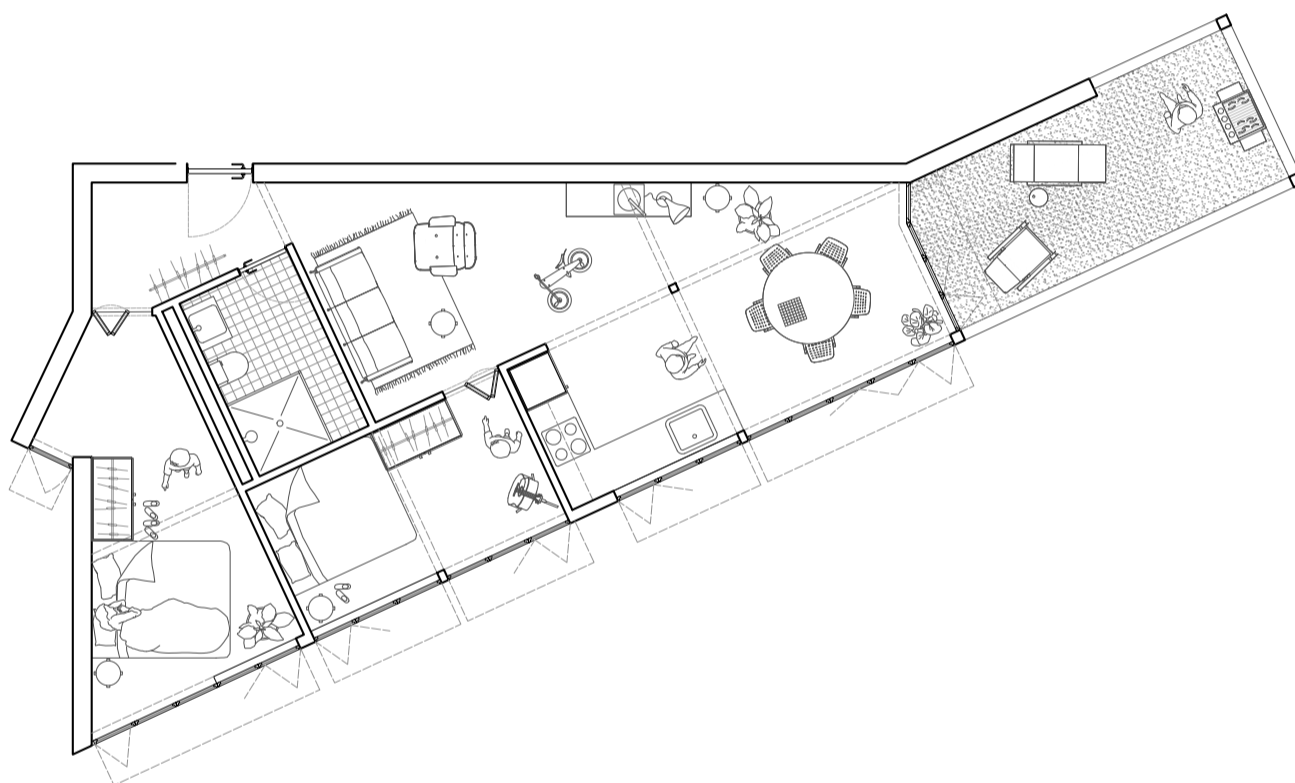
Persons = # Rooms - 1 = 1P

Net floor area (NFA): 55.5m²

NFA per person: 55.5m²

New apartment type

1:100



Data

Apartment type: 3.5

Persons = # Rooms - 1 = 2P

Net floor area (NFA): 56m²

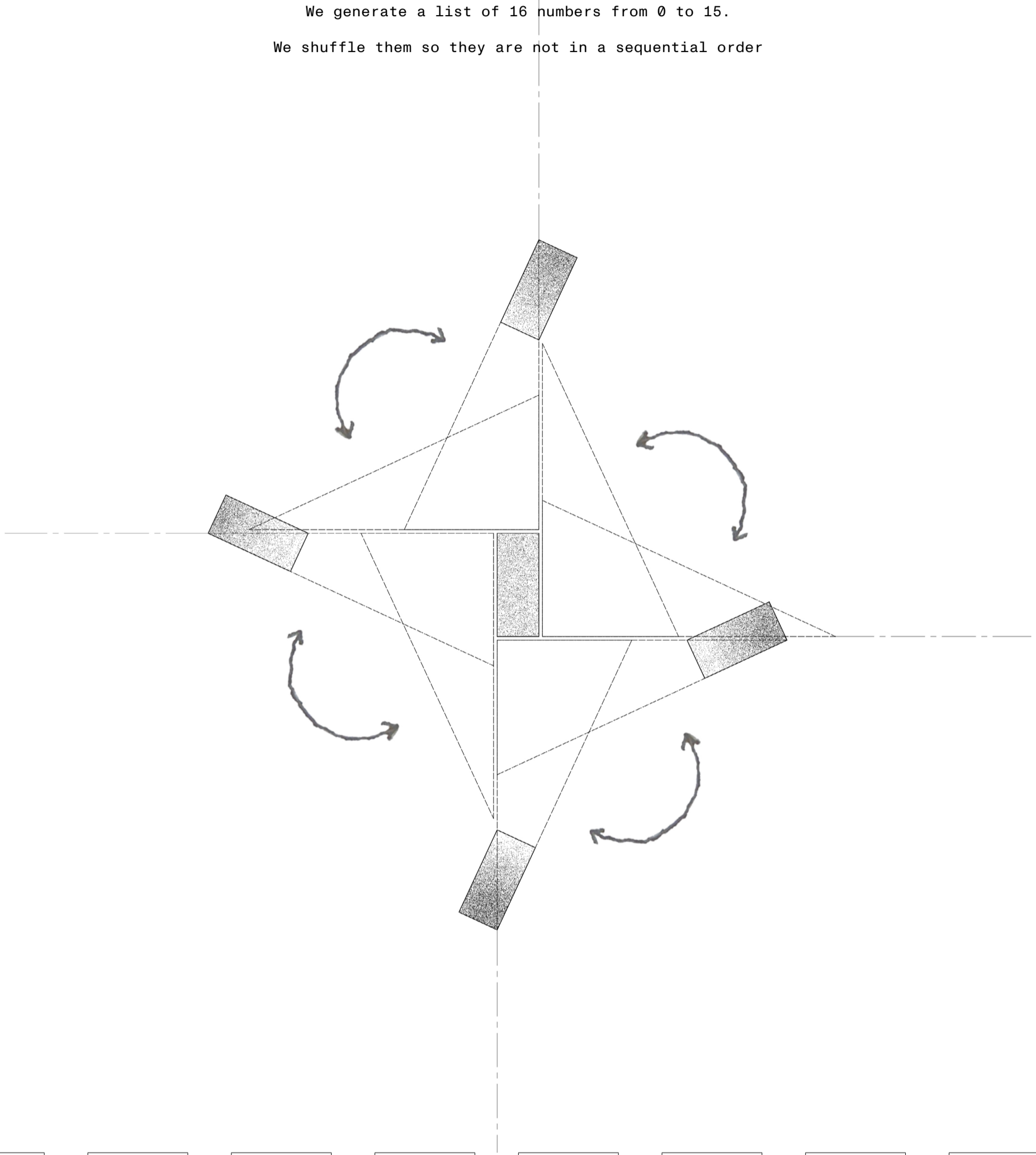
NFA per person: 28m²

Concept diagram

There are 16 possibilities of placing the triangles around the staircase.

We generate a list of 16 numbers from 0 to 15.

We shuffle them so they are not in a sequential order



Layout 1
standing
laying
laying
standing

Layout 2
standing
laying
standing
standing

Layout 3
standing
standing
laying
laying

Layout 4
laying
standing
laying
laying

Layout 5
laying
laying
standing
laying

Layout 6
standing
laying
laying
laying

Layout 7
laying
standing
laying
standing

Layout 8
standing
standing
standing
standing

Layout 9
laying
laying
laying
standing

Layout 10
standing
standing
standing
laying

Layout 11
standing
laying
standing
standing

Layout 12
laying
standing
standing
standing

Layout 13
standing
standing
laying
standing

Layout 14
laying
laying
laying
laying

Layout 15
laying
standing
standing
laying

Layout 16
laying
laying
standing
standing