

situation 1/1000

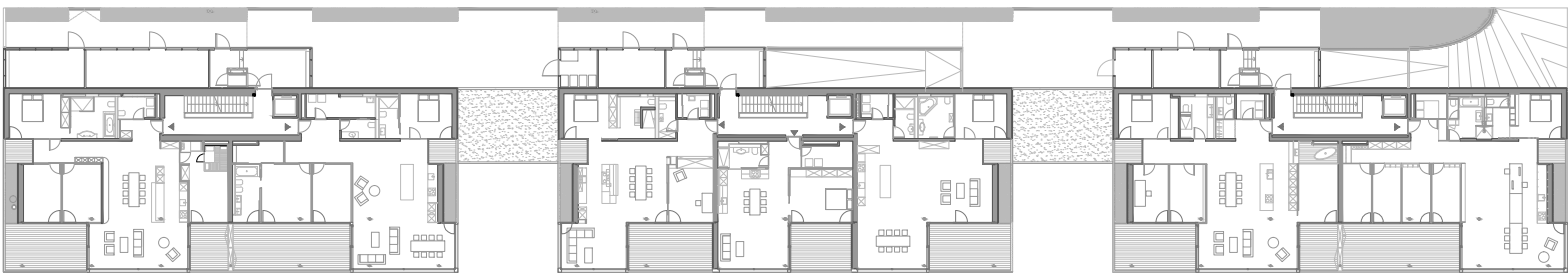
Wohnbauten "BeauRivage" Biel



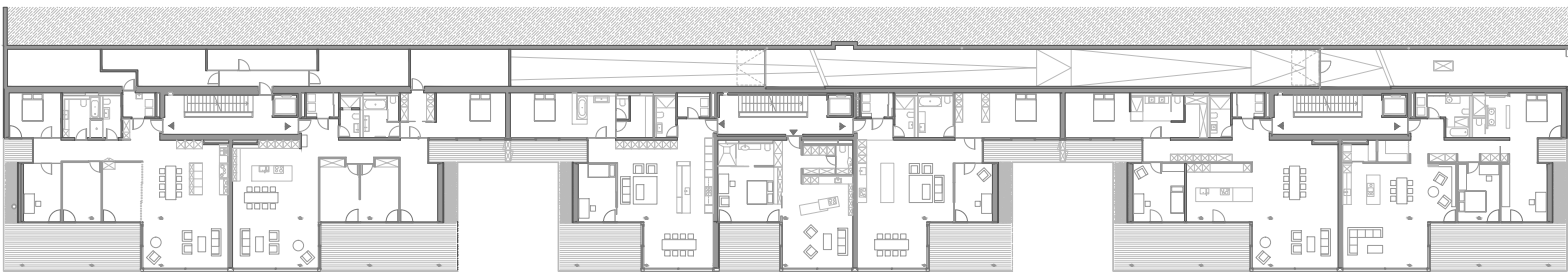
ebene 5



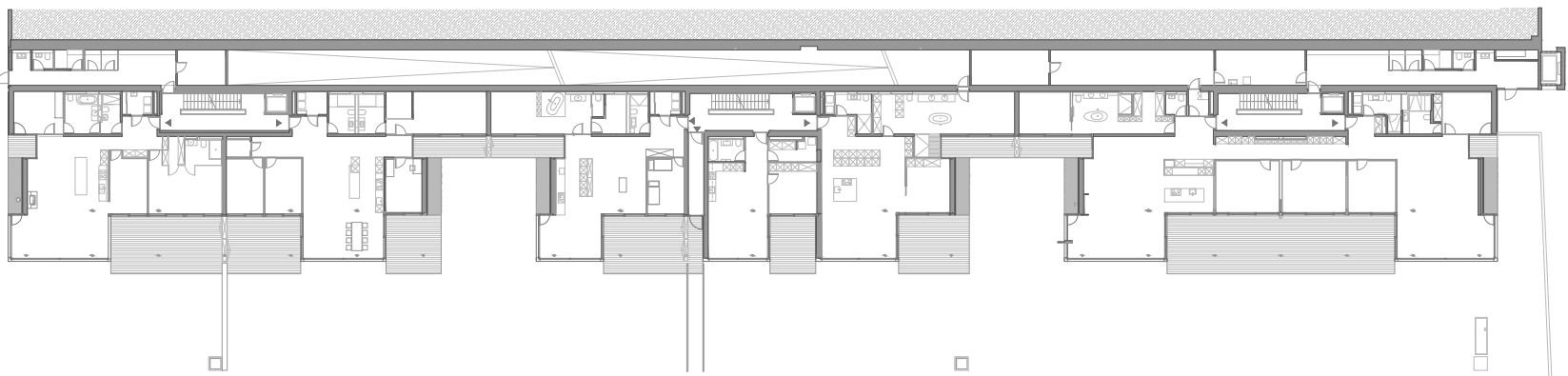
ebene 4



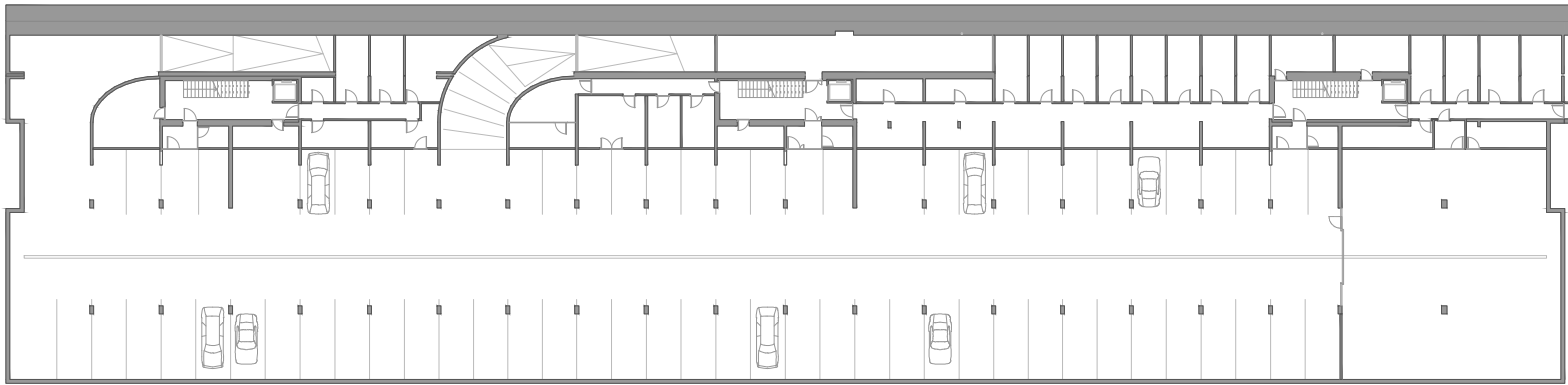
ebene 3



ebene 2

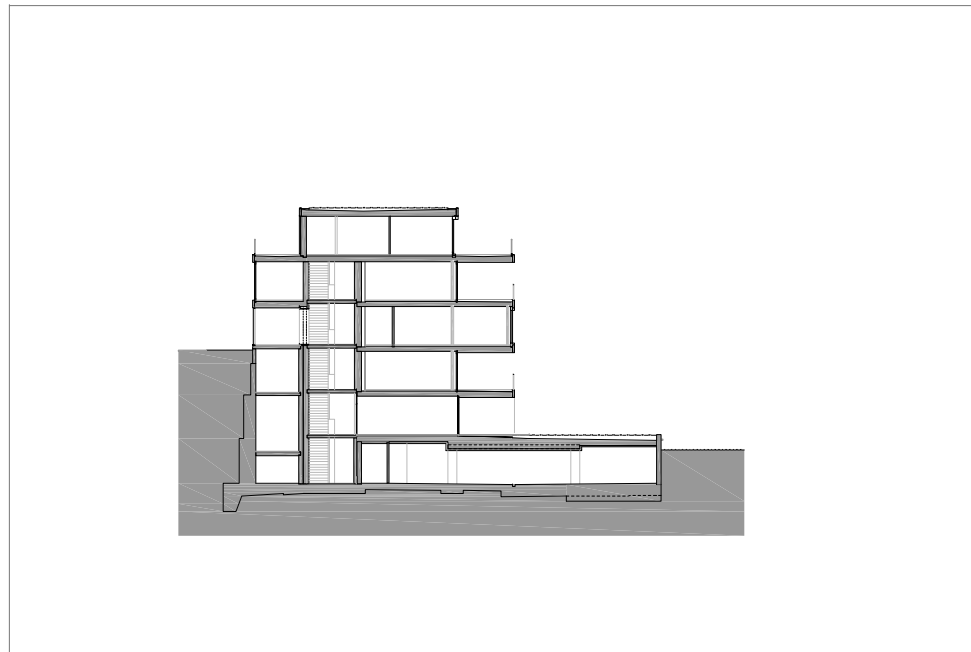


ebene 1



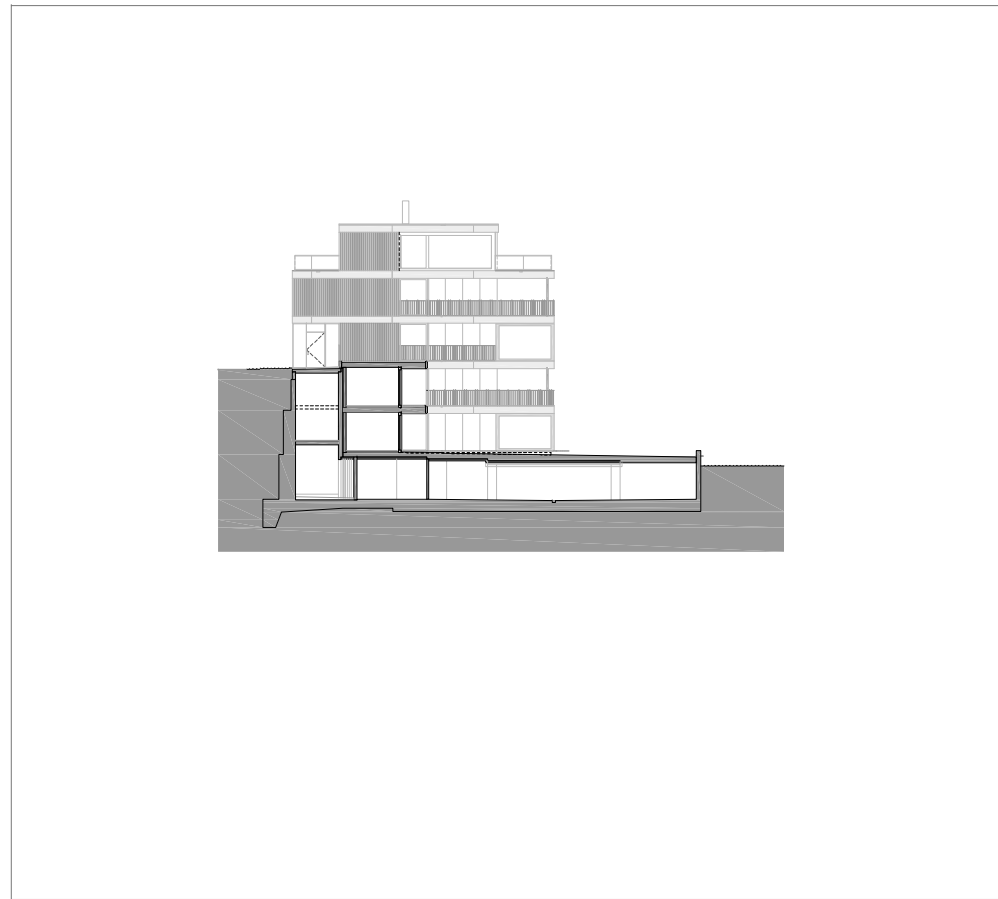
ebene 0





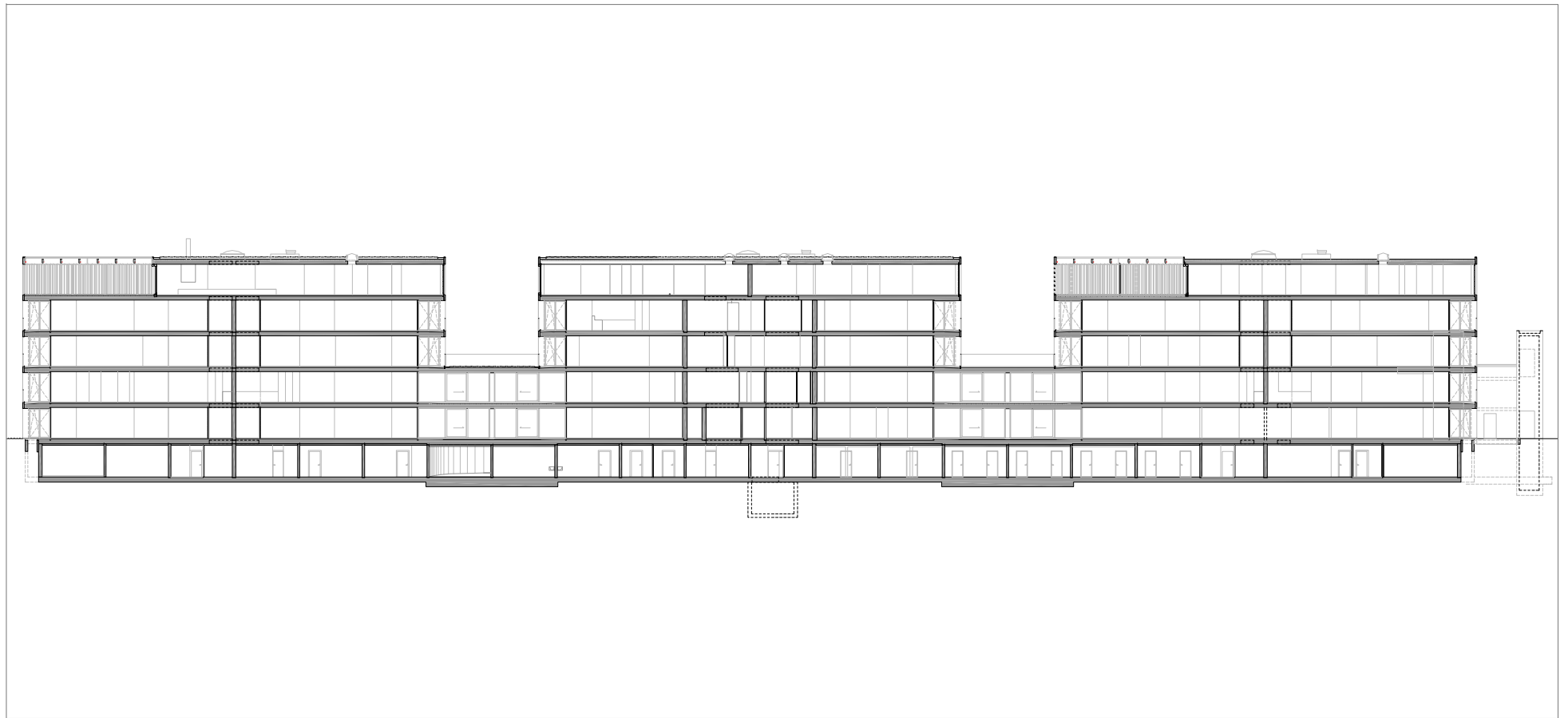
schnitt bb





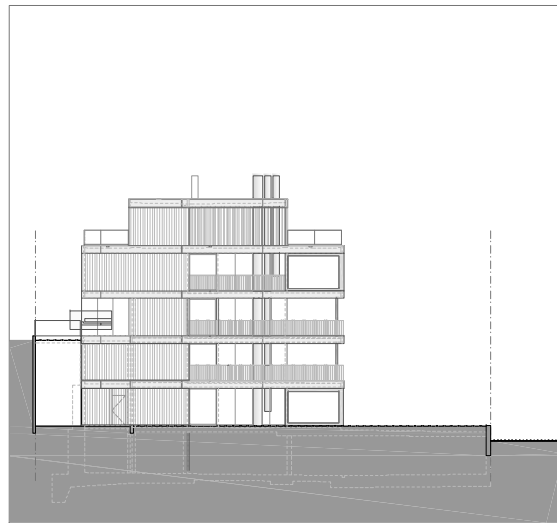
0 1 5

schnitt dd

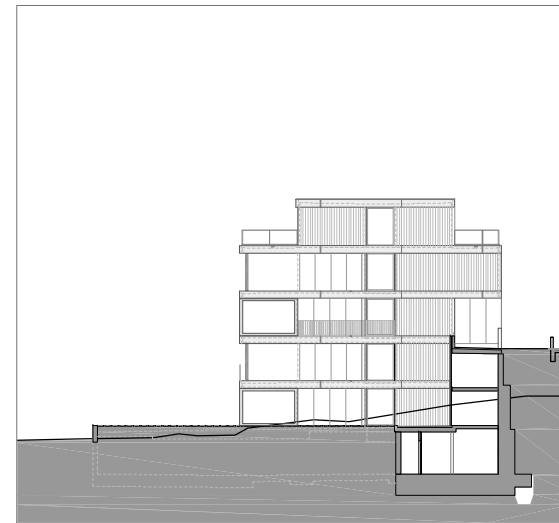


0 1 5

schnitt mm



fassade west



fassade ost



fassade nord

0 1 5

bauzeitarchitekten

Plans are saved in Adobe Acrobat as PDF directly from Autocad.
Please remark that the plans are saved with layers. This allows you to decide which layers you want to see or freeze in the plan.

Thank you

bauzeit architekten